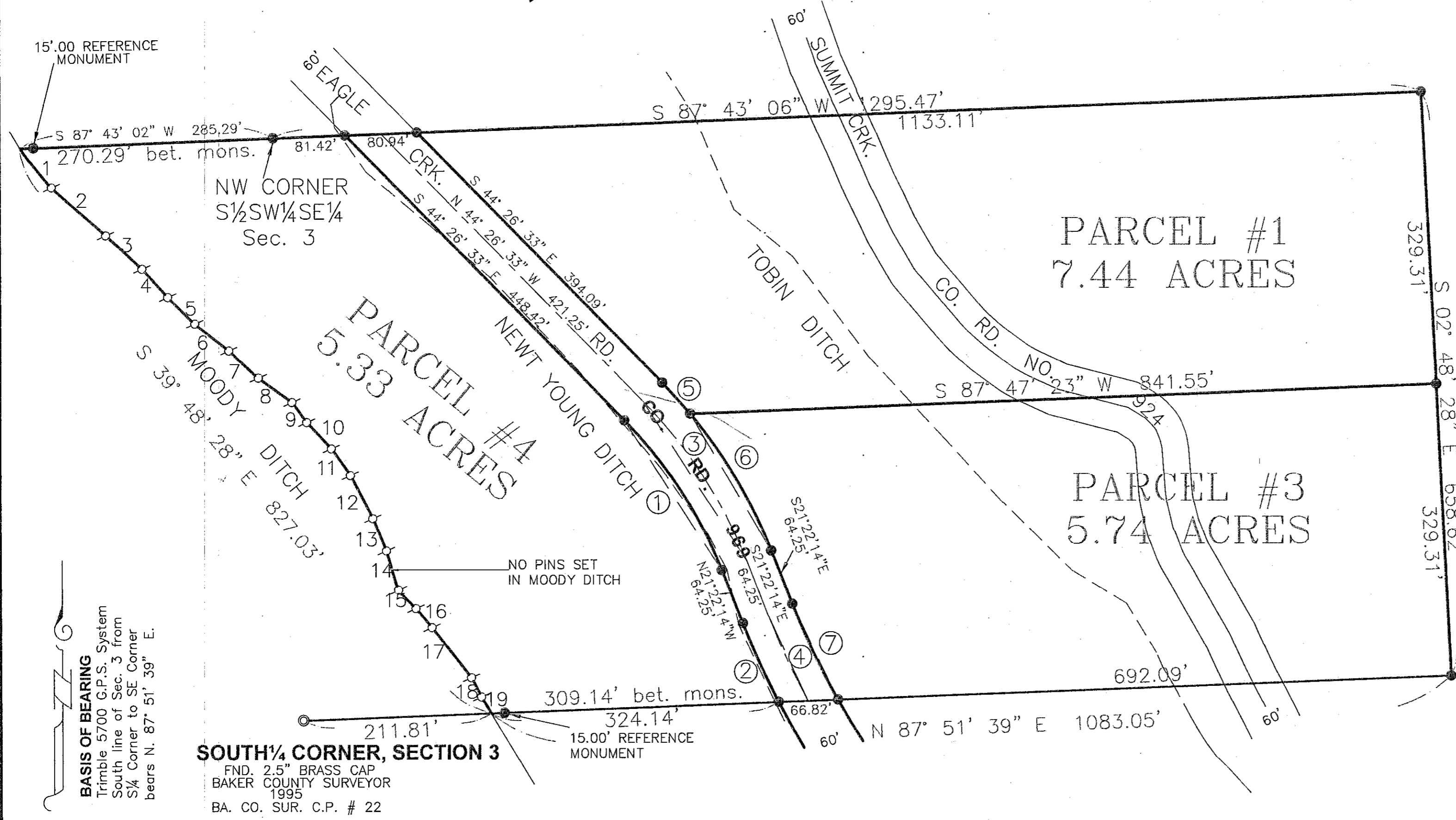


**SW¹/₄ AND SE¹/₄ SECTION 3,
T. 9 S. R. 45 E., W.M.**

PARTITION PLAT NO.

P 2007-002



**BOUNDARY DATA/
MOODY DITCH**

1. S.38° 40' 01" E., 56.47'
2. S.48° 38' 07" E., 81.33'
3. S.47° 05' 45" E., 55.59'
4. S.42° 17' 47" E., 43.11'
5. S.45° 26' 25" E., 42.34'
6. S.51° 32' 21" E., 48.61'
7. S.47° 32' 46" E., 45.51'
8. S.54° 22' 10" E., 46.80'
9. S.36° 41' 51" E., 27.91'
10. S.43° 01' 56" E., 40.61'
11. S.35° 32' 35" E., 36.67'
12. S.27° 19' 52" E., 54.98'
13. S.22° 26' 22" E., 39.45'
14. S.17° 11' 42" E., 46.06'
15. S.43° 15' 51" E., 28.57'
16. S.39° 52' 42" E., 27.98'
17. S.38° 06' 45" E., 71.58'
18. S.27° 46' 03" E., 24.44'
19. S.30° 33' 03" E., 21.36'

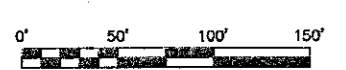
**P.O.B
SE CORNER
SW¹/₄ SE¹/₄
SECTION 3**

REFERENCES
Baker County Survey No. 9-45-50.
Baker County Deed Vol. 150, Page 611.
Baker County Partition Plat No. P2001-002.
Baker County Surveyor Corner Preservation Records

BASIS OF BEARING
Trimble 5700 G.P.S. System
South line of Sec. 3 from
S¹/₄ Corner to SE Corner
bears N. 87° 51' 39" E.

SOUTH¹/₄ CORNER, SECTION 3
FND. 2.5" BRASS CAP
BAKER COUNTY SURVEYOR
1995
BA. CO. SUR. C.P. # 22

SCALE: 1" = 100'



HANLEY ENGINEERING, INC.
P.O. BOX 701, 2043 MAIN STREET, BAKER CITY, OREGON 97814 (541) 523-3803

LEGEND

- Set 5/8" x 30" rebar with plastic cap marked "HANLEY ENGR. PLS 1817".
- Found, brass cap monument as noted.
- [] Record data per Ba. Co. Sur. No. 9-45-50
- () G.L.O. Bearings and distances of record.
- { } B.L.M. Dependent Resurvey 1983

CO. RD. 969 CURVE DATA

- ① WESTERLY ROAD R/W CURVE DATA
DELTA ANG.= 23° 4' 18.38"
R = 503.5369'
T = 102.7742'
L = 202.7634'
Lc = S. 32° 54' 23" E. 201.3963'
- ② WESTERLY ROAD R/W CURVE DATA
DELTA ANG.= 5° 57' 33.52"
R = 937.1377'
T = 48.7796'
L = 97.4713'
C = S. 24° 21' 01" E. 97.4274'
- ③ CL ROAD CURVE DATA
DELTA ANG.= 23° 4' 18.38"
R = 533.5369'
T = 108.8974'
L = 214.8438'
Lc = S. 32° 54' 23" E. 213.3952'
- ④ CL ROAD CURVE DATA
DELTA ANG.= 6° 51' 14.04"
R = 907.1377'
T = 54.3221'
L = 108.5146'
C = S. 24° 47' 51" E. 108.4500'
- ⑤ WESTERLY ROAD R/W CURVE DATA
DELTA ANG.= 4° 46' 49.07"
R = 563.5369'
T = 23.5221'
L = 47.0170'
C = S. 42° 03' 08" E. 47.0033'
- ⑥ EASTERLY ROAD R/W CURVE DATA
DELTA ANG.= 18° 17' 29.31"
R = 563.5369'
T = 90.7254'
L = 179.9072'
C = S. 30° 30' 59" E. 179.1441'
- ⑦ EASTERLY ROAD R/W CURVE DATA
DELTA ANG.= 7° 49' 2.31"
R = 877.1377'
T = 59.9304'
L = 119.6747'
C = S. 25° 16' 45" E. 119.5819'

DITCH EASEMENT

Easement is conveyed to those with a legal water right for irrigation beyond the boundary of said parcel fed by any existing improved ditch. To those persons, is granted a perpetual, non-exclusive easement for it and its laterals, feeders and sub-ditches, headgates and other appurtenances to operate, use, maintain, etc., restore and repair, with heavy equipment when needed, the existing ditch in the same manner as same presently exists upon, over and across the property as shown on the annexed minor partition plat. The total width shall equal the bank to bank ditch width, plus 15 feet beyond the bank on each side of the ditch. Reasonable access to the easement will be granted at location designated by the property owner, unless other reasonable access is available.

I, Thomas J. Hanley, hereby certify that this is an exact duplicate copy of the partition plat as submitted to the Baker County Clerk for recording.

Thomas J. Hanley
Thomas J. Hanley

**REGISTERED
PROFESSIONAL
LAND SURVEYOR**
Thomas J. Hanley
OREGON
JULY 13, 1979
THOMAS J. HANLEY
1817

Renews June 30, 2007

FILED February 5, 2007
BAKER COUNTY SURVEYOR
SURVEY NO. 9-45-83 MP