

OREGON CORNER RESTORATION FORM

Section 23 Township 9S Range 45E
 County Baker Date: August 30, 2001

Corner Designation: 9S45P21

Common quarter corner to sections 23 and 24, T9S, R45E,
 W.M., Baker County, Oregon.

Condition Report Only
 Not found
 Remonumented
 Unrecorded
 Surveyed in
 Referenced out

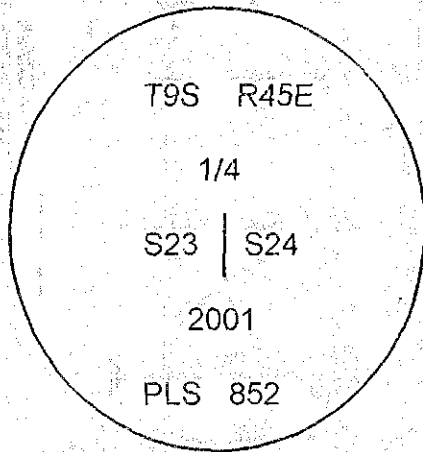
Previous Renewals / Surveys, etc.

Corner originally set by W. B. Barr under contract #355 dated June 14, 1880. His record reads Set a post, dug pits and raised mound as per instructions for 1/4 Sec. Cor., A railroad spike was found at this position in survey 9-45-37. The spike was reported as missing in survey 9-45-40 and a position was computed from references set by a land owner prior to the Highway repaving. Survey 9-45-42 again found a railroad spike.

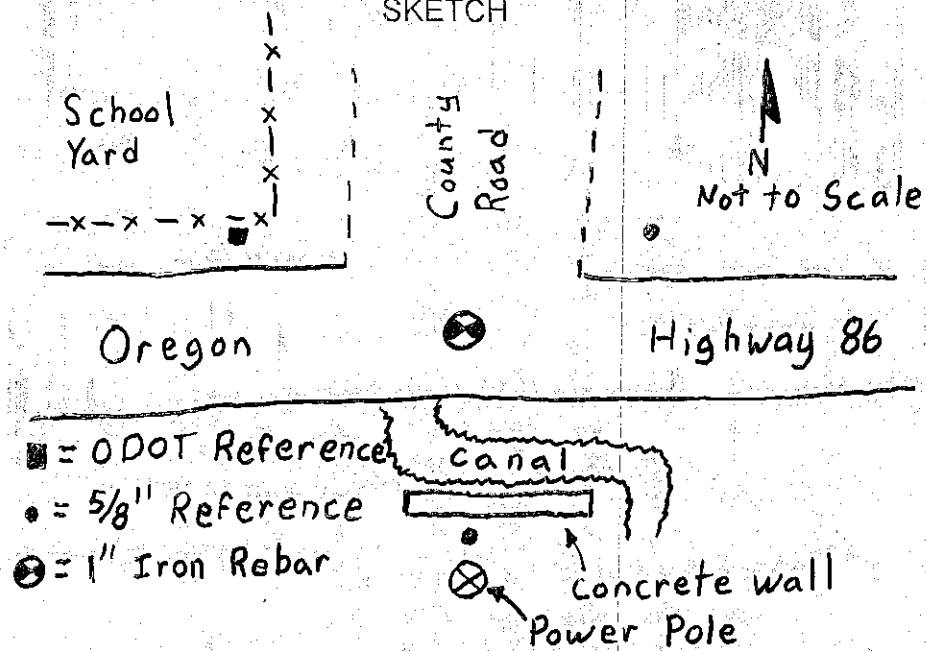
Monument and Accessories found: (condition and source)

None. The position was computed from monuments from survey 9-45-40. This position was verified by measurements to monuments from surveys 9-45-37 and 9-45-42.

DIAGRAM



SKETCH



MONUMENT (S) AND ACCESSORIES SET (Procedures and Description)

I set a 1" x 24" iron rebar with a 2" Aluminum cap stamped as shown in the diagram above concreted in the asphalt of the Highway.

For references, I accepted the existing monumentation as described below:

- The initial point of the partition for Calvin Ransom bears N45°06'56"E, 42.37 feet;
- An ODOT reference brass cap in a 6" concrete plug bears N41°28'00"W, 40.97 feet;
- A 5/8" iron rebar with a yellow plastic cap from survey 9-45-40 bears S00°01'49"W, 30.00 feet;

The monument and references were tied using a LIECA system 300 RTK GPS.

Location and comments

Compass Declination

Surveyors Seal

RECEIVED BY:

Baker County Surveyor

Date:

Rec'd By:

No.

Firm / Agency

Haddock Surveying

Address

P.O. Box 1574

Pendleton, Or. 97801

Party Chief

Stephen K, Haddock

REGISTERED
 PROFESSIONAL
 LAND SURVEYOR

David L. Haddock

OREGON
 JULY 12, 1988
 DAVID L. HADDOCK
 852

RENEWS 6-30-03

FILED DECEMBER 17, 2001

BAKER COUNTY SURVEYOR

SURVEY NO. 9-45-67

CP# 76