

OREGON CORNER RESTORATION FORM

Section 23 Township 9S Range 45E
 County Baker Date: August 30, 2001

Corner Designation: 9S45P19

Condition Report Only

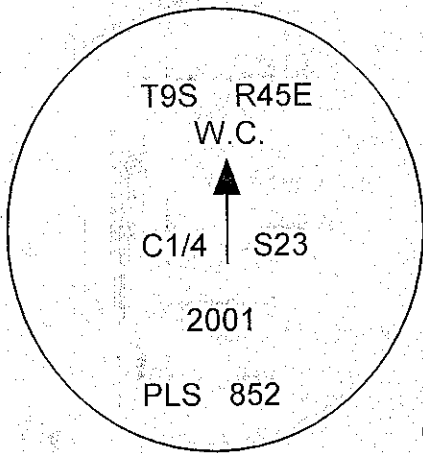
Not found
 Remonumented
 Unrecorded
 Surveyed in
 Referenced out

Center quarter corner to section 23, T9S, R45E,
 W.M., Baker County, Oregon.

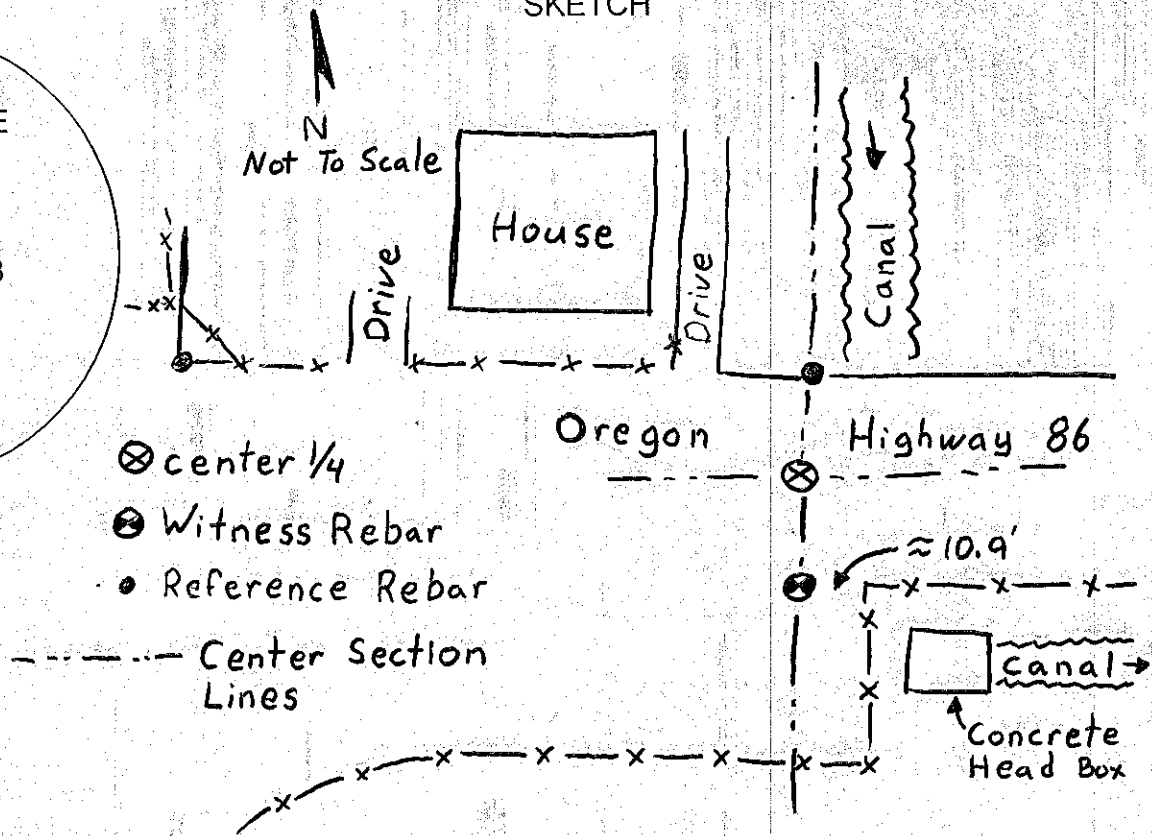
Previous Renewals / Surveys, etc.
 Corner not previously set.

Monument and Accessories found: (condition and source)
 None.

DIAGRAM



SKETCH



MONUMENT (S) AND ACCESSORIES SET (Procedures and Description)

Set a 1" x 24" iron rebar with a 2" Aluminum cap stamped as shown in the diagram above
 S00°10'50"W, 32.33 feet as a witness monument.

For references, I set two 5/8" by 24" rebars with 1.25" red plastic caps stamped ORLS 852 and
 WALS 13922 as described below:

- an iron rebar bears N00°10'50"W, 23.73 feet, on the existing Highway right of way;
- an iron rebar bears N86°06'41"W, 329.21 feet, on the existing Highway right of way;

The monument and references were tied using a LIECA system 300 RTK GPS.

Location and comments

Compass Declination

Surveyors Seal

RECEIVED BY:

Baker County Surveyor

Date:

Rec'd By:

No.

Firm / Agency

Haddock Surveying

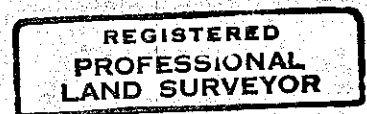
Address

P.O. Box 1574

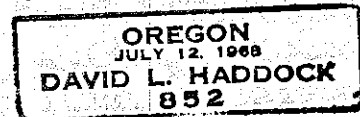
Pendleton, Or. 97801

Party Chief

Stephen K, Haddock



David L. Haddock



RENEWS 6.30.03

FILED DECEMBER 17, 2001

BAKER COUNTY SURVEYOR

SURVEY NO. 9-45-66

CP # 75