

Narrative

This survey for Baker County Road Department was for the purpose of locating the centerline of a portion of the Newbridge to Richland Section of FAS Route 510 shown on Oregon State Highway Department drawing of Project No. S-138 (1), dated June, 1953. The method of relocating the centerline was performed as follows:

The existing roadway was traversed by trial centerline, measured midway between the as-constructed shoulders and/or paved section. Ties were made to those existing culverts listed and shown by highway centerline stationing. Deflection angles at the trial points of intersections along the tangent lines were measured, together with the horizontal distances between the trial P.I.s. The results were converted to local coordinates and plotted for comparison to the given map data.

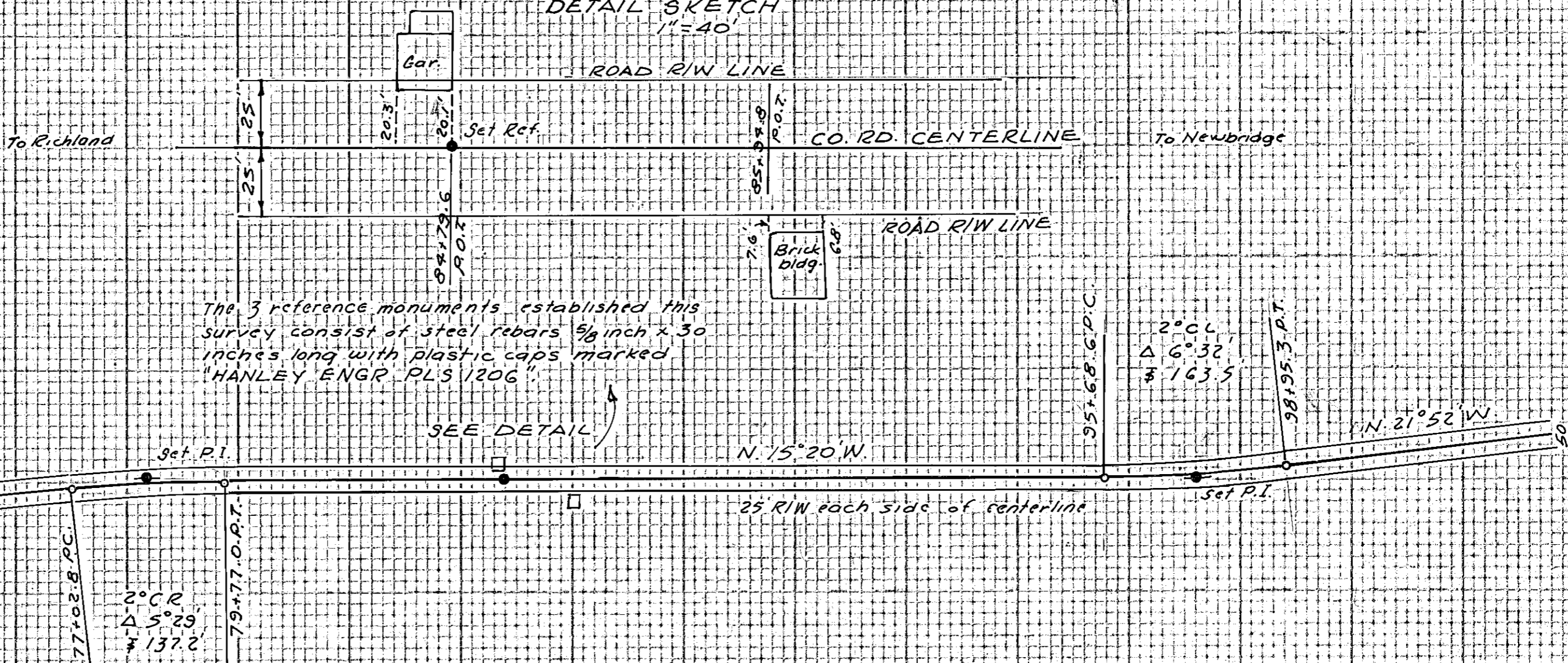
Slight adjustments to the trial locations were then made to reconstruct the given alignment data in conformance with the map right of way information.

References were established in the roadway as indicated hereon.

In Secs 10 and 15, T 9 S, R 45 E, W.M.



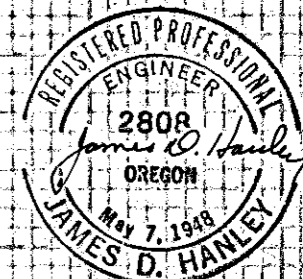
DETAIL SKETCH
1" = 40'



BAKER COUNTY ROAD DEPARTMENT
RELOCATION OF CENTERLINE AND REFERENCES
NEWBRIDGE-RICHLAND SECTION OSHD
PROJECT S-138(1), JUNE, 1953.

RESURVEYED DECEMBER, 1987

SCALE 1" = 200'



FILED JAN 5 1988

BAKER COUNTY SURVEYOR

SURVEY NO 9-45-43

Baker, Oregon