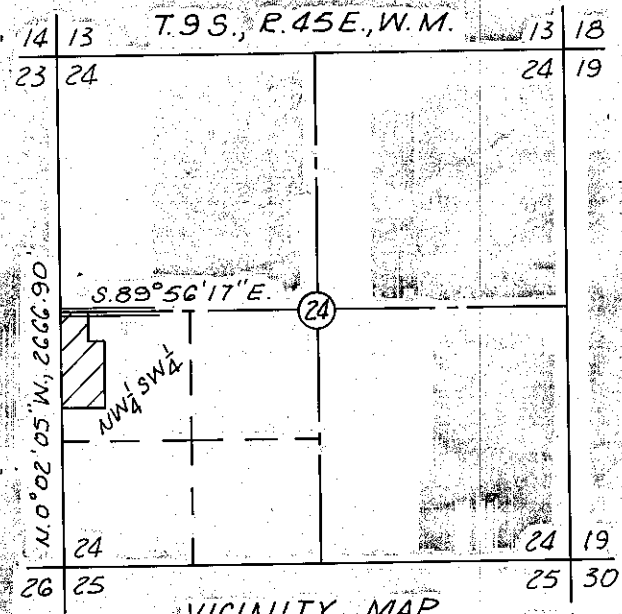
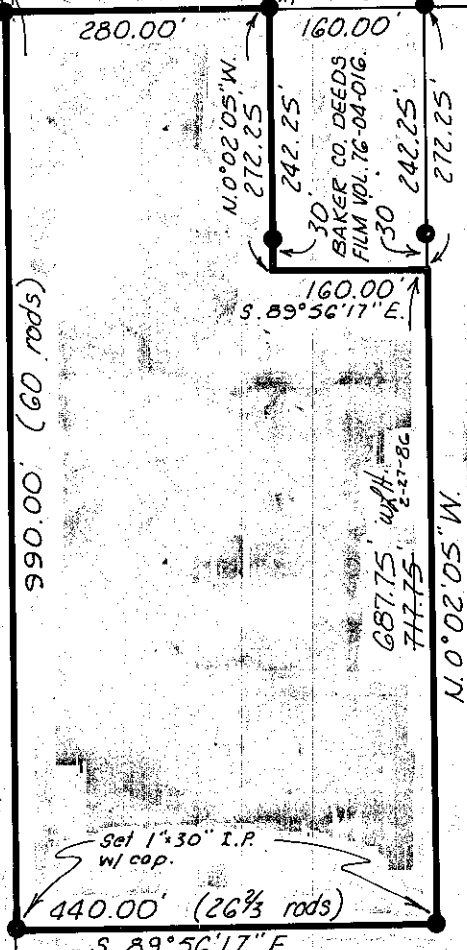


Northwest cor. SW $\frac{1}{4}$ position from D. Olsen references taken prior to OSHD repovement.

OSHD BAKER-HOMESTEAD HWY.
S. 89° 56' 17" E.

NOTE: North line SW $\frac{1}{4}$ reestablished 30.9' north of SE cor. "conc. headbox" reference - Survey no. 9-45-9.



VICINITY MAP
1" = 2000'

LEGEND

- Recovered corner position as noted.
- Set 3/8" x 30" rebar, or 1" IP as noted, with yellow plastic cap marked: B. HANLEY SURV. ORLS 1639
- Boundary established this survey.

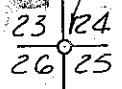
SURVEY REFERENCES - Baker County Deeds

Book 156	Page 584	Film Volume	76-04-016
"	158	"	79-34-054
"	159	"	79-43-095
"	159	"	81-42-097 - REJECTED
"	"	"	84-13-060 - ERRONEOUS
"	"	"	85-49-002 - ERRONEOUS

SURVEY REFERENCE - Baker County Survey no. 9-45-9.

NOTE: Narrative filed separately.

Section corner position reestablished from recovered reference monuments north and south - ref. Baker County Survey no. 9-45-9.



MAP OF SURVEY

IN THE NW $\frac{1}{4}$ SW $\frac{1}{4}$ SECTION 24, T. 9 S., R. 45 E., WM

Surveyed Dec. 11, 1985

Scale 1" = 200'

FOR DEE & GLORIA OLSEN

FILED 1-2-86
BAKER COUNTY SURVEYOR
SURVEY NO. 9-45-40

REGISTERED PROFESSIONAL LAND SURVEYOR

William L. Hanley
Baker, Ore.

OREGON
JULY 14, 1978
WILLIAM L. HANLEY
1639