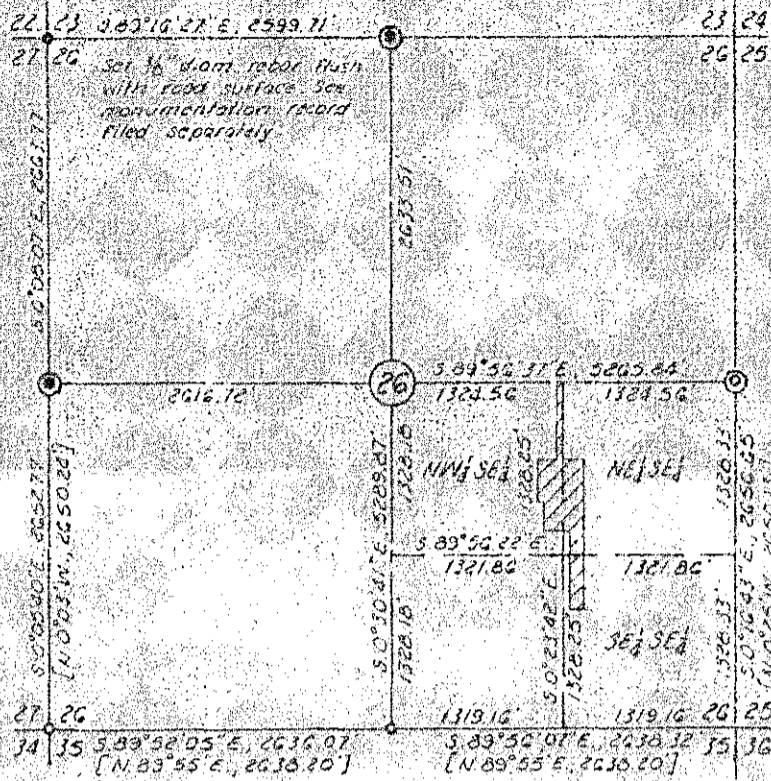
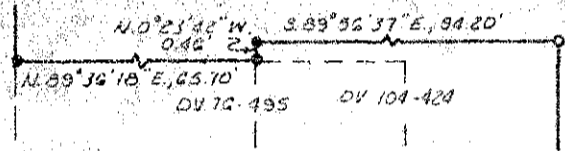


N.T.S.

T.9S, R.45E, W.M.



VICINITY MAP  
1"=1320'



DETAIL "A"  
Scale 1"=5'

LEGEND

- ⊙ Found original GLD corner
- ⊙ Found original GLD corner, set 2" brass cap on 1" iron pipe. See monumentation record filed separately.
- Set 3/8" x 30" rebar with yellow plastic cap marked HANLEY ENGR unless otherwise noted. Pcs 1206
- Found Idaho Power Co. brass cap monument unless otherwise noted. See Survey No. 9-45-3.
- [ ] Record of Idaho Power Co. dependent resurvey. See Survey No. 9-45-3.
- ( ) Record of Baker County Deeds.
- - - Existing fence line.

MAP OF SURVEY  
OF THE EAGLE VALLEY CEMETERY  
IN THE NW 1/4, NE 1/4 AND SE 1/4 SECTION 26  
T. 9 S., R. 45 E., W.M.  
Surveyed June 7, 8, & 26, 1982 Scale 1"=100'  
For Eagle Valley Cemetery Association

SURVEY NARRATIVE BY ATTACHMENT

July 1, 1982

3-45-31

The North line NW 1/4 Sec 26  
Bears S 29° 16' 27" E

William D. Hanley

Accepted 2" diam iron pipe fence  
post in concrete encasement for  
point of beginning Baker County  
Deeds Book 104 at Page 424.

N.T.S.