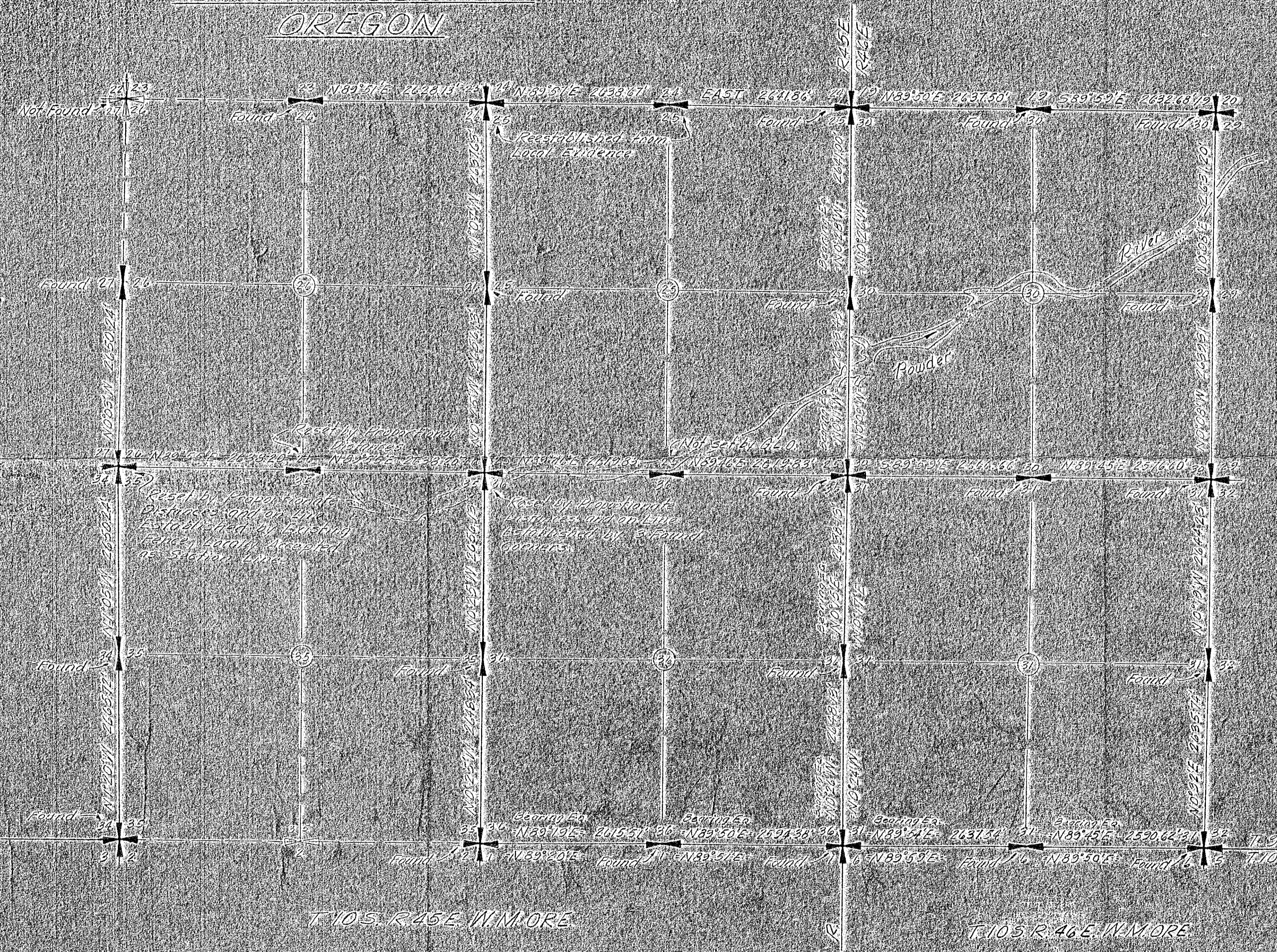
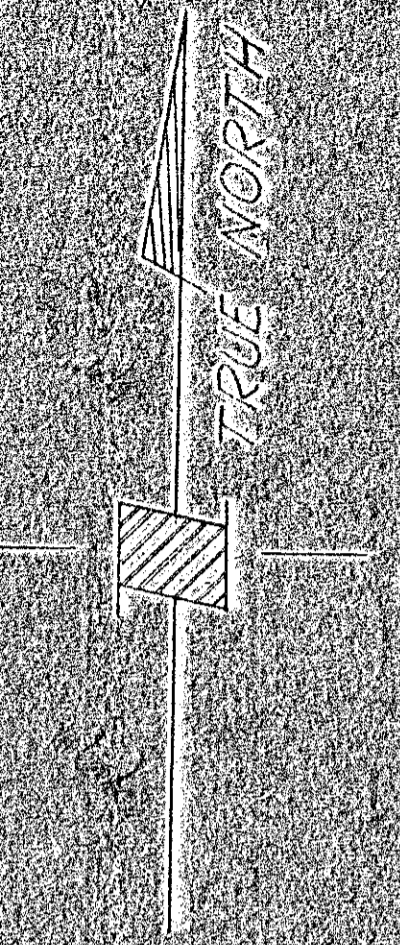


T9S. R.45E. W.M. ORE  
 BAKER COUNTY  
 OREGON

T9S. R.46E. W.M. ORE



LEGEND

- FOUND OR RESET SECTION CORNERS
- NOT FOUND CORNERS

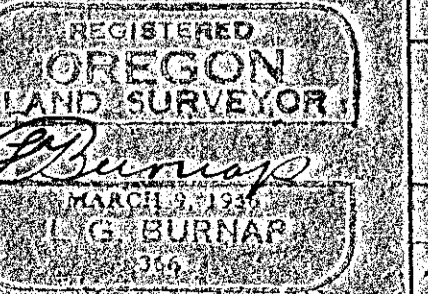
NOTES:

POWDER RIVER IS APPROXIMATE.

B-SK-29

BROWNLEE DEVELOPMENT  
 DEPENDENT RESURVEY OF  
 SECS. 25, 26, 35, 36, T9S. R.45E. W.M. ORE  
 SECS. 30, 31, T9S. R.46E. W.M. ORE

IDAHO POWER CO.  
 BOISE, IDAHO



FILED Jan 10 1912  
 BAKER COUNTY SURVEYOR  
 SURVEY NO. 9-45-3

SCALE: 1" = 1000'      SEPT. 17, 1957

DR. 170  
 TR.  
 CH.      20R-16711