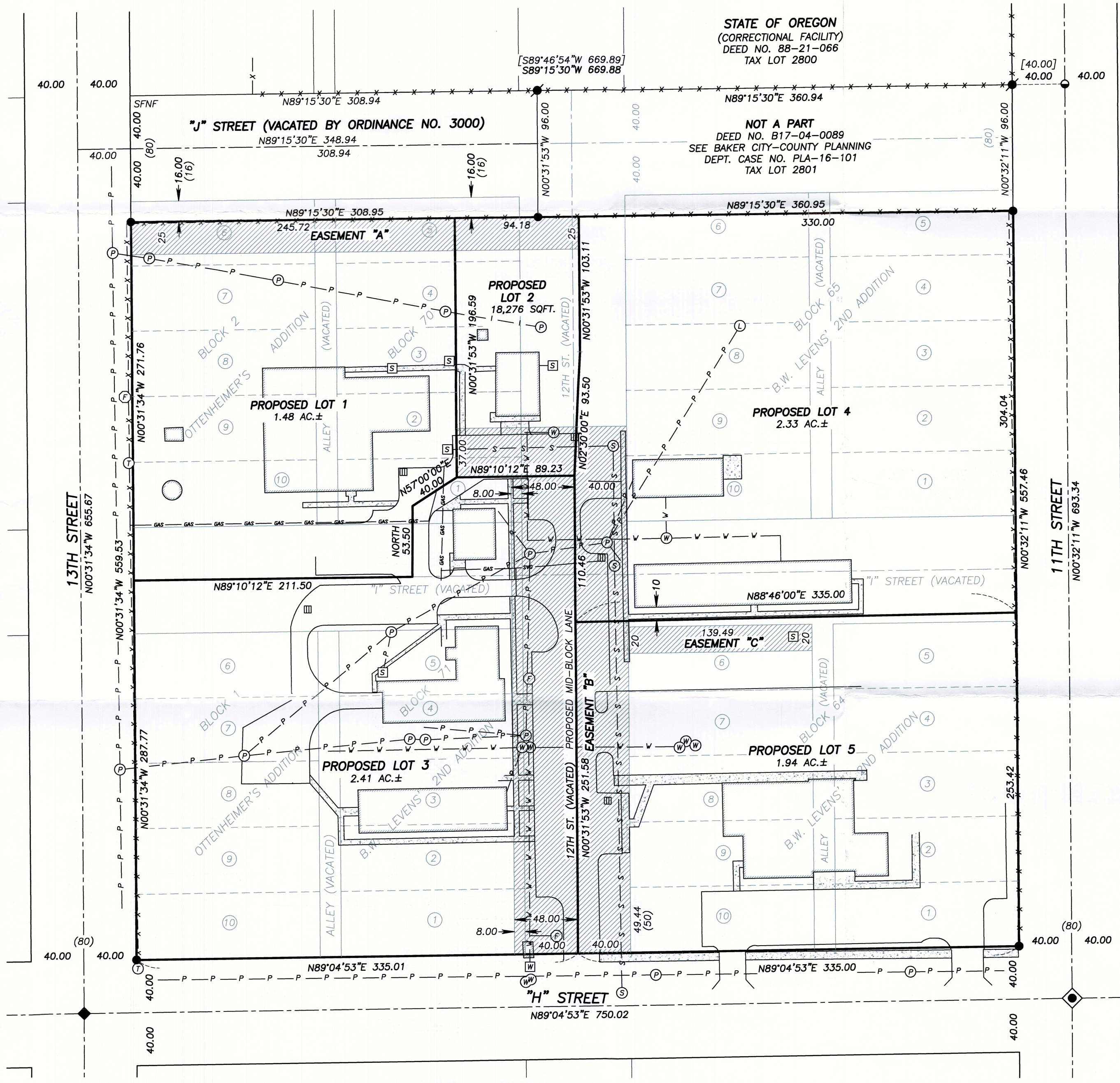


PRELIMINARY PLAT

A PROPOSED REPLAT OF BLOCKS 1 & 2 OTTENHEIMER'S ADDITION AND BLOCKS 64, 65, 70 & 71 B.W. LEVENS' 2ND ADDITION, AND PORTIONS OF VACATED "I" STREET AND 12TH STREET SITUATED IN THE S1/2SW1/4 SECTION 8, T.9S., R.40E., W.M., BAKER CITY, BAKER COUNTY, OREGON
TAX LOT 2900 ON MAP 09S40E08CD

STATE OF OREGON
(CORRECTIONAL FACILITY)
DEED NO. 88-21-066
TAX LOT 2800

NOT A PART
DEED NO. B17-04-0089
SEE BAKER CITY-COUNTY PLANNING
DEPT. CASE NO. PLA-16-101
TAX LOT 2801



LEGEND

- ◆ FOUND CENTERLINE MONUMENT: A 3/4" IRON PIN IN A STEEL MONUMENT CASE
- ◆ FOUND RAILROAD SPIKE UNDER ASPHALT SURFACE
- FOUND 3/4" GALV. IRON PIPE AS ACCEPTED ON SURVEY NO. 9-40-262. THE PIPE HAD BEEN DISTURBED, WITH THE TOP 12" BENT NORTH. ALSO FOUND A PK NAIL SET AT THE SPIN POINT, WHICH WAS TIED AND ACCEPTED FOR THE CORNER POSITION.
- 5/8"x30" IRON PIN WITH ATTACHED YELLOW PLASTIC CAP MARKED BENCHMARK SURVEYING, SET DURING MAP OF SURVEY NO. 9-40-728
- 1/2" PK NAIL IN ASPHALT SURFACE, SET DURING MAP OF SURVEY NO. 9-40-728
- () PLAT/DEED RECORD BEARING AND DISTANCE
- [] RECORD BEARING AND DISTANCE FROM SURVEY NO. 9-40-262
- ① ORIGINAL LOT NUMBER
- ▭ EXISTING STRUCTURE
- x-x CHAIN LINK FENCE
- s- SANITARY SEWER LINE
- P- OVERHEAD POWER LINE
- gas- GAS LINE
- v- WATER LINE
- STREET CENTER LINE
- ⊙ SANITARY SEWER MANHOLE
- ⊠ SANITARY SEWER CLEANOUT
- ⊕ POWER POLE
- ⊙ LIGHT POLE
- ⊕ WATER VALVE
- ⊠ WATER METER
- ⊕ FIRE HYDRANT
- ⊙ UTILITY SLEEVE
- ⊕ TELEPHONE RISER
- ⊠ STORM DRAIN
- ▬ CONCRETE SIDEWALK

LANDOWNER

DONALD J. THOMPSON AND DANIEL L. THOMPSON DBA PACIFIC EQUIPMENT
PO BOX 866
NORTH BEND, OR 97459
DAN THOMPSON (541) 404-7181
DON THOMPSON (541) 404-7180

ENGINEER

JOE HITZ, PE
SISUL ENGINEERING
158 E MAIN STREET
JOHN DAY, OR 97845
(541) 575-3777



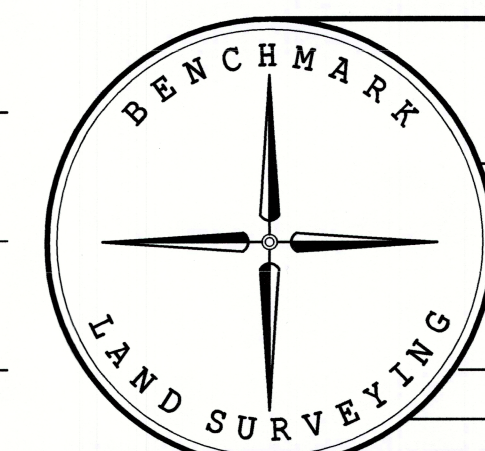
- EASEMENT "A"**
A PROPOSED 25 FOOT WIDE PUBLIC EASEMENT FOR UTILITIES
- EASEMENT "B"**
A PROPOSED PUBLIC EASEMENT FOR ACCESS AND UTILITIES
- EASEMENT "C"**
A PROPOSED 20 FOOT WIDE PUBLIC EASEMENT FOR UTILITIES

REGISTERED PROFESSIONAL LAND SURVEYOR

Jason L. Hatfield

OREGON
NOVEMBER 30, 2007
JASON L. HATFIELD
#69454
EXPIRES: 6/30/2017

- NOTES:**
- EXCEPT WHERE LOCATE MARKS OR VISIBLE IMPROVEMENTS WERE LOCATED BY SURVEY, UNDERGROUND UTILITY LINES SHOWN ARE APPROXIMATE, AND ARE BASED OFF ARMY CORPS OF ENGINEERS PLANS DATED JANUARY 18, 1956.
 - ACCORDING TO FEMA'S FLOOD INSURANCE RISK MAP 41001C0385C, THIS PROPERTY IS OUTSIDE THE 100 YEAR FLOOD PLAIN
 - NO CONTOURS ARE SHOWN. THE AVERAGE GRADE OF THE SITE IS LESS THAN 1%.



BENCHMARK LAND SURVEYING
217 N. CANYON BLVD. JOHN DAY, OREGON
2101 MAIN STREET, STE 223 BAKER CITY, OREGON
541-575-1251 ~ 800-699-0516

PRELIMINARY PLAT
A PROPOSED REPLAT OF BLOCKS 1 & 2 OTTENHEIMER'S ADDITION & BLOCKS 64, 65, 70 & 71 B.W. LEVENS' 2ND ADDITION, AND PORTIONS OF VACATED "I" STREET AND 12TH STREET SITUATED IN THE S1/2SW1/4 SECTION 8, T.9S., R.40E., W.M., BAKER CITY, BAKER COUNTY, OREGON
TAX LOT 2900 ON MAP 09S40E08CD

PREPARED FOR	DON AND DAN THOMPSON
SCALE: 1"=60'	DRAWN BY: JLH
	2/1/2017