

BASIS OF BEARING

True geodetic North at the corner common to Sections 8, 9, 16 and 17, Township 9 South, Range 40 East of the Willamette Meridian, as determined by GPS observation

SCALE: 1"=100'

REFERENCE MATERIAL

Survey Number 09-40-008
 Survey Number 09-40-687
 Survey Number 09-40-727
 Partition Plat PP1994-002
 (Survey Number 09-40-392)

ODOT strip map 1R-04-1206
 ODOT strip map 5B-14-21
 ODOT strip map 9B-3-22
 ODOT strip map 10B-4-4

DEED REFERENCES

Deed 75 13 026
 Deed 86 13 013
 Deed 68 07 009
 Deed 65 33 061
 Deed 75 13 026
 Deed 02 40 0141
 Deed 14 17 0138

LEGEND

- Found 5/8" iron pin, accepted as Section Corner
- ⊙ Found 2" brass cap, set by Survey Number 09-40-687
- ⊙ Found 3" brass cap in concrete headwall, set by Oregon Department of Transportation
- ▲ Found 5/8" iron pin with 1 1/2" aluminum cap (unless otherwise specified), set by Oregon State Highway Department
- Found 1/2" iron pin (unless otherwise specified), with yellow plastic cap marked RPE 2808, set by Survey 09-40-008
- Found 5/8" iron pin with yellow plastic cap marked HANLEY ENGR PLS 1206, set by Partition Plat 1994-002 (Survey Number 09-40-392)
- ◆ Found 5/8" iron pin with 1 1/2" aluminum cap marked APA LS 60000, set by Survey Number 09-40-727
- Set 5/8" x 30" iron pin with plastic cap marked BGB SURVEY MARKER
- Centerline
- - Fenceline
- [] Record measurement as per ODOT Strip Map 9B????
- { } Record measurement as per Partition Plat 1994-002
- - Record measurement as per Survey Number 09-40-008
- () Record measurement as per Survey Number 09-40-727

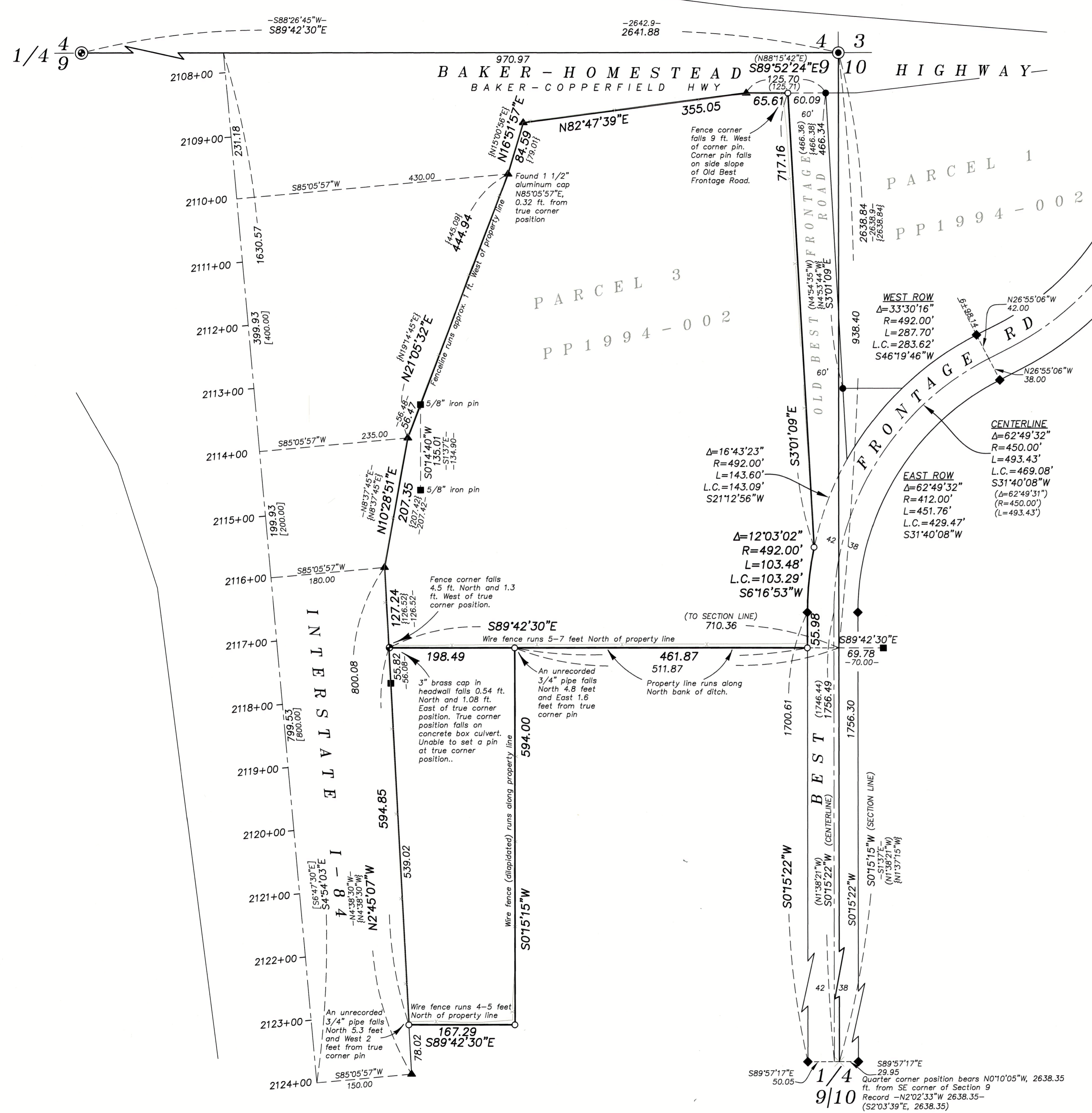
NARRATIVE

This survey was done at the request of Matt Gibb in preparation for an ALTA survey. I recover monuments as shown. I hold pins found at stations 2114+00, 2116+00 and 2124+00 and develop a centerline by record offset. I find the pin at Station 2110+00 slightly out of position from record offset and hold this pin for line only. I hold ODOT pins along Baker-Homestead Highway as well as the pin set by Survey 09-40-392 for the South right-of-way line. Pins set by Survey 09-40-727, marking the realignment of Best Frontage Road are harmonious with measured distances and I hold these in place. I base a position for the East quarter corner of Section 9 as per Survey 09-40-727 and 09-40-392. For the old alignment of Best Frontage Road, I hold the pins set on the West line of Parcel 1 of Partition Plat 1994-002 and offset 60 feet to the West to place the West right of way line. For the South line of the Northerly tract, I hold a line the record 938.40 feet South from the North line of the Northeast quarter of Section 9. To establish the East line of the Southerly tract, I hold a point the record 511.87 feet from the East line of Section 9, along the South line of the Northerly tract. I run this line the record 594 feet South, parallel with the East line of the Section. There are 3/4" OD iron pipes that fall in the approximate corners of the Southerly tract. I find no record of these and therefore do not accept these. Fencelines are off as shown. I find no other unusual conditions with this survey.

REGISTERED
 PROFESSIONAL
 LAND SURVEYOR

OREGON
 JUNE 2, 2010
 JEFFREY S. HSU
 83571

Renewal Date: June 30, 2023



BAGETT, GRIFFITH & BLACKMAN
 2006 Adams Avenue, LaGrande, Oregon
 Map of Survey

Situated in the Northeast quarter of Section 9,
 Township 9 South, Range 40 East of the
 Willamette Meridian

BAKER COUNTY, OREGON

FILED December 8, 2021
 BAKER COUNTY SURVEYOR
 SURVEY NO. 9-40-830

| | |
|----------------|----------------------------------|
| SURVEYED FOR | Matt Gibb |
| SURVEYED BY | J. S. H. |
| Scale: 1"=100' | Drawn by: J. S. H. Nov-Dec. 2021 |