

SHEET INDEX

1. SHEET INDEX, NARRATIVE AND CONTROL NARRATIVE.
2. REFERENCES
3. CONTROL NETWORK SCHEMATIC & SHEET LAYOUT, NETWORK POINT COORDINATE TABLE
- 4.-23. SURVEY

NARRATIVE

THE PURPOSE OF THIS SURVEY IS TO RESOLVE THE EXISTING RIGHT OF WAY FOR THE FOLLOWING LOCATIONS IN BAKER CITY, OR:

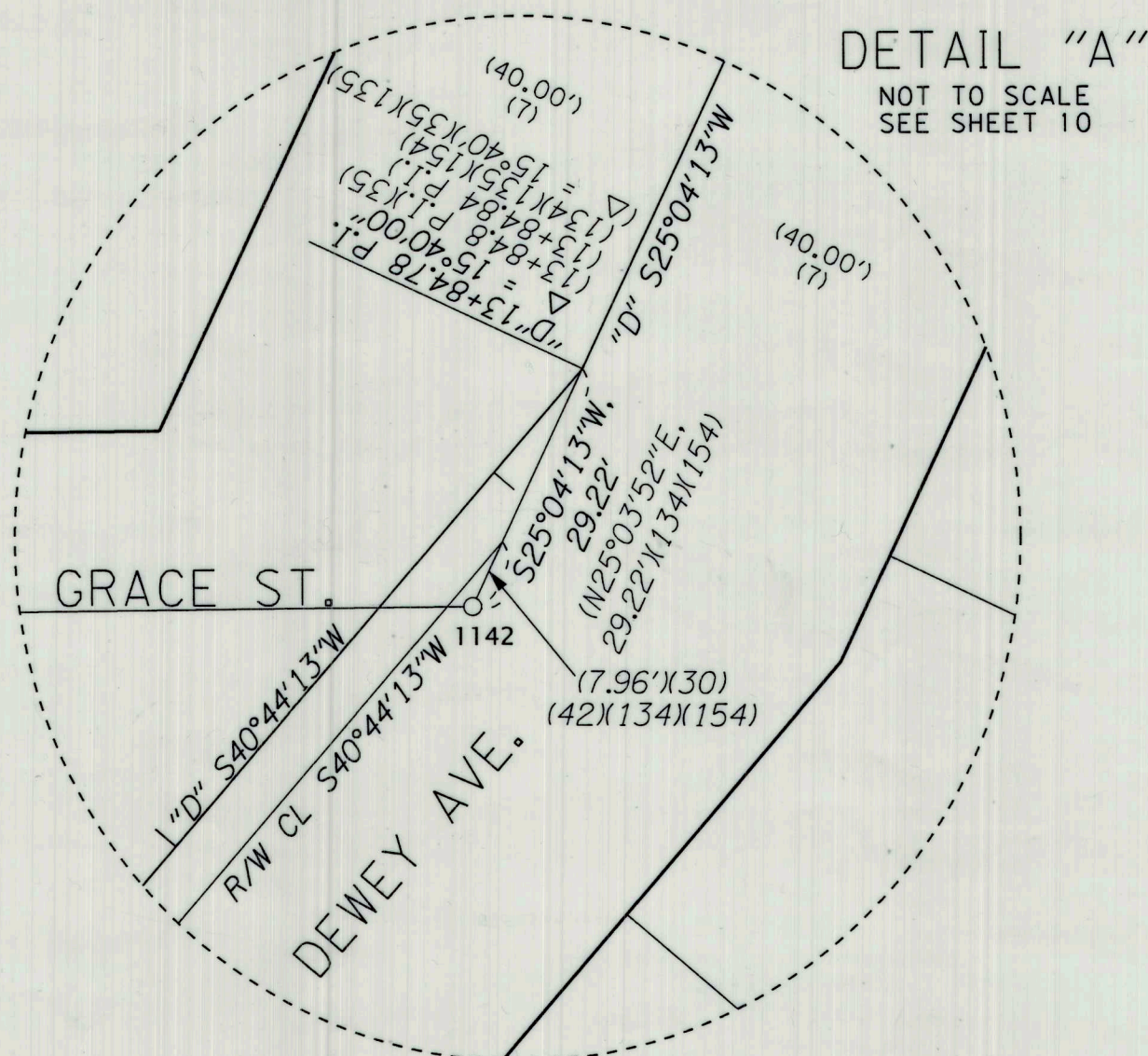
1. BAKER-COPPERFIELD HIGHWAY (MAIN ST.)(OR7) FROM CAMPBELL ST. TO BROADWAY ST.
2. WHITNEY HIGHWAY (DEWEY AVE.) FROM AUBURN ST. TO INDIANA AVE.
3. LA GRANDE-BAKER HIGHWAY (US30)(BRIDGE ST.)(ELM ST.) FROM BROADWAY ST. TO S. BRIDGE ST.
4. LA GRANDE-BAKER HIGHWAY (US30)(BROADWAY ST.) FROM MAIN ST. TO TENTH ST.

THIS SURVEY PERPETUATES THOSE SURVEY MONUMENTS WITHIN THE PROJECT LIMITS IN JEOPARDY OF BEING DESTROYED BY A FUTURE CURB RAMP CONSTRUCTION PROJECT. THIS SURVEY MEETS THE REQUIREMENTS FOR A RECOVERY SURVEY AS OUTLINED IN THE OREGON REVISED STATUTES, SECTION 209.155. THIS SURVEY WAS PERFORMED IN INTERNATIONAL FEET UNITS. THIS SURVEY WAS PERFORMED BETWEEN THE MONTHS OF FEBRUARY 2020 AND APRIL 2021. THE SURVEY EQUIPMENT USED CONSISTED OF LEICA GS-14 RECEIVERS, LEICA TS16 TOTAL STATIONS, AND LEICA CS15 AND CS20 SURVEY CONTROLLERS.

CONTROL NARRATIVE

PRIMARY CONTROL WAS BROUGHT INTO THE PROJECT USING THE OREGON REAL TIME GNSS NETWORK (ORGN) TO ESTABLISH HORIZONTAL POSITIONS ON GPS CONTROL STATIONS 1 THROUGH 34 BY INCORPORATING THE AVERAGE OF TWO SEPARATE SESSIONS UNDER DIFFERENT SATELLITE CONSTELLATIONS. THE HORIZONTAL DATUM USED FOR THIS PROJECT IS NAD 83(2011) EPOCH 2010, OREGON COORDINATE REFERENCE SYSTEM (OCRS), BAKER ZONE. THE BAKER ZONE PROJECTION PARAMETERS ARE PUBLISHED IN OREGON ADMINISTRATIVE RULES (OAR) 734-005-015. BASIS OF BEARINGS: MEASURED BEARINGS ARE GRID PER THE PROJECT DATUM.

VERTICAL CONTROL WAS ESTABLISHED BY HOLDING THE RECORD ELEVATION OF 3453.05' FOR NATIONAL GEODETIC SURVEY (NGS) BENCHMARK Q488 (PID 0B0912) AND RUNNING A CLOSED LEVEL CIRCUIT THROUGH THE CONTROL POINTS SHOWN ON THIS SURVEY. ELEVATIONS ARE ON THE NAVD88 VERTICAL DATUM.



LA GRANDE - BAKER HIGHWAY (BROADWAY ST.)(US30)

THE CENTER LINE FOR LA GRANDE - BAKER HIGHWAY (BROADWAY STREET) WAS ESTABLISHED BY HOLDING CENTER LINE MONUMENTS FOUND AT THE INTERSECTION OF BROADWAY STREET WITH MAIN STREET, SECOND STREET, AND FOURTH STREET. CENTER LINE MONUMENTS FOUND OFFSET FROM THE INTERSECTIONS AT POINTS 1208, 1205, AND 1204 WERE ALSO HELD. THE MONUMENTS FOUND AT THE INTERSECTION OF BROADWAY STREET WITH EIGHTH (POINT 1201) AND NINETH (1200) WERE HELD. THE CENTER LINE OF TENTH STREET WAS ESTABLISHED BY HOLDING PRORATED DISTANCE BETWEEN THE CENTER LINE MONUMENTS FOUND AT THE INTERSECTIONS OF MADISON STREET WITH ELEVENTH STREET AND NINETH STREET (POINTS 1271 AND 1272). SURVEY AD-20-10 WAS USED TO ESTABLISH RECORD DISTANCE OF 722.13 FEET BETWEEN SAID MONUMENTS AND A DISTANCE OF 722.407 FEET WAS MEASURED. OREGON STATE HIGHWAY DRAWING SHOWS A CURVE AT THE INTERSECTION OF TENTH STREET AND BROADWAY STREET THAT WAS RECREATED BY HOLDING RECORD DEGREE OF CURVE OF 54°. STATIONING WAS HELD AT THE POINT OF CURVATURE (P.C.) OF THIS CURVE AT RECORD STATION 103+22.4 P.C. THE RIGHT OF WAY WAS ORIGINALLY ESTABLISHED BY THE PLATS ADJACENT TO BROADWAY STREET. COUNTY SURVEY AD-20-13 SHOWS RIGHT OF WAY WIDTHS THAT WERE HELD FOR THIS SURVEY BECAUSE MANY OF THE ADJOINING PLATS DO NOT STATE A RIGHT OF WAY WIDTH. THE PORTION WESTERLY OF FOURTH STREET WAS HELD AT A WIDTH OF 80.00 FEET AND THE PORTION EASTERLY OF FOURTH STREET WAS HELD AT A WIDTH OF 100.00 FEET, EXCEPT WHERE THERE IS A VACATION ORDINANCE.

LA GRANDE - BAKER HIGHWAY (MAIN ST.)(FRONT ST.) "M" LINE

THE LA GRANDE - BAKER HIGHWAY (MAIN ST.)(FRONT ST.) WAS ESTABLISHED BY HOLDING CENTER LINE MONUMENTS SET BY THE CITY OF BAKER AT THE INTERSECTIONS OF MAIN STREET WITH "A" STREET, MADISON STREET, BAKER STREET, CHURCH STREET, BROADWAY STREET, WASHINGTON STREET, VALLEY STREET, AND AUBURN STREET. THE EAST LINE OF MAIN STREET WAS ESTABLISHED BY HOLDING A LINE DRAWN BETWEEN THE EAST QUARTER OF SECTION 17 (POINT 1118) AND THE SOUTHEAST CORNER OF SECTION 17 (POINT 1140) RESULTING IN A MEASURED BEARING AND DISTANCE OF N0°36'41"W, 2644.03'. THE WEST LINE OF MAIN STREET WAS ESTABLISHED AT A WIDTH OF 50.00' FEET FROM CENTER LINE PER J.M. BOYD'S ADDITION AND THE U.S. TOWNSITE OF BAKER. NO RECORD CENTER LINE ALIGNMENT WAS FOUND FOR MAIN STREET EXCEPT FOR THE PORTION FROM BROADWAY STREET TO AUBURN STREET WHICH IS SHOWN ON ODOT DRAWING 3B-22-23. STATIONING WAS HELD AT THE MONUMENT AT THE INTERSECTION OF BROADWAY STREET WITH MAIN STREET (POINT 1124). MADISON STREET BETWEEN MAIN STREET AND RESORT DRIVE WAS PLACED BY PROPORTIONING.

LA GRANDE - BAKER HIGHWAY (BRIDGE ST.)(ELM ST.)(HWY 30) "E" LINE

THE CENTER LINE FOR LA GRANDE - BAKER HIGHWAY WAS ESTABLISHED BY HOLDING MONUMENTS FOUND AT POINTS 1132 AND 1140 IN THE INTERSECTION WITH AUBURN STREET AND THEN EXTENDING A LINE BETWEEN SAID POINTS EASTERLY RECORD DISTANCE OF 15.00 FEET, SHOWN ON COUNTY SURVEYS 09-40-02BC AND SURVEY AD-18-2, TO CREATE THE ANGLE POINT AT STATION "E"49+90.77 P.I. THE NEXT TANGENT AHEAD WAS CREATED BY HOLDING SAID ANGLE POINT TOGETHER WITH THE MONUMENT FOUND IN THE INTERSECTION OF BRIDGE STREET WITH SPRING GARDEN AVENUE (POINT 1176). MONUMENTS FOUND IN THE CENTER OF ELM STREET AT THE INTERSECTIONS WITH SPRING GARDEN AVENUE AND INDIANA STREET WERE HELD TO ESTABLISH CENTER OF ELM STREET, WHICH WAS EXTENDED NORTHERLY TO INTERSECT WITH THE CENTER LINE OF BRIDGE STREET. RECORD DEGREE OF CURVE OF 14° PER OREGON STATE HIGHWAY DRAWING 3B-22-23 WAS HELD TO RECREATE THE CURVE. THE NEXT TANGENT AHEAD WAS CREATED BY HOLDING THE MONUMENT FOUND AT STATION "E"52+99.842 P.I. (POINT 1279) TOGETHER WITH RECORD DELTA ANGLE OF 48°16'00". RECORD DEGREE OF CURVE OF 4° WAS HELD TO ESTABLISH THE CURVE AT STATION 33+43.837 P.I.

THE RIGHT OF WAY FOR THE PORTION OF BRIDGE STREET WESTERLY OF POWDER RIVER WAS ORIGINALLY CREATED BY THE PLAT OF M.E. PLACES ADDITION. THE PLAT DOESN'T SHOW A WIDTH FOR BRIDGE STREET, HOWEVER, A WIDTH WAS FOUND ON SURVEY 09-40-02BC OF 70.00 FEET, 40.00 FEET SOUTHERLY AND 30.00 FEET NORTHERLY OF CENTER LINE. SOUTHEASTERLY OF POWDER RIVER AND NORTHERLY OF SPRING GARDEN AVENUE, OREGON STATE HIGHWAY DRAWING 3B-22-23 AND COUNTY SURVEY 09-40-02BC SHOW A WIDTH OF 60.5 FEET, 32.2' SOUTHERLY AND 27.8' NORTHERLY OF CENTER LINE. ELM STREET SOUTHERLY OF SPRING GARDEN AVENUE IS SHOWN ON OREGON STATE HIGHWAY DRAWING 3B-22-23 AT A WIDTH OF 70.00 FEET, 35.00 FEET ON EITHER SIDE OF CENTER LINE. A PORTION OF ELM STREET WAS CREATED PER THE PLAT OF WILLOVALE AT A WIDTH OF 70.00 FEET. SOUTHEASTERLY OF WILLOVALE, OREGON STATE HIGHWAY DRAWING 3B-22-23 SHOWS A WIDTH OF 80.00 FEET, 40.00 ON EACH SIDE OF CENTER LINE. RECORD STATIONING WAS HELD AT THE INTERSECTION OF BRIDGE STREET WITH ELM STREET PER COUNTY SURVEY 09-40-0550 BY ODOT.

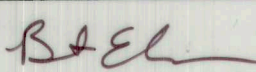
WHITNEY HIGHWAY (DEWEY AVENUE) "D" LINE

WHITNEY HIGHWAY (DEWEY AVE.) WAS ESTABLISHED BY RECREATING THE RECORD SHAPE OF THE CENTER LINE ALIGNMENT SHOWN ON COUNTY SURVEY 09-40-0738 AND POSITIONED BY HOLDING RECORD DISTANCE OF 29.22 FEET FROM THE MONUMENT AT POINT 1142 (SEE DETAIL THIS SHEET) AND ROTATED TO HOLD THE CENTER LINE MONUMENT AT POINT 1136. THE RIGHT OF WAY FOR DEWEY AVENUE WAS CREATED BY THE PLAT OF M.E. PLACES ADDITION TO BAKER CITY FROM AUBURN STREET TO GRACE STREET. NO WIDTH IS STATED ON SAID PLAT, HOWEVER, A WIDTH OF 80.00 FEET IS SHOWN ON SURVEY 09-40-0187 AND ON 09-40-0738. THE PORTION OF DEWEY AVENUE FROM GRACE STREET TO THE UNION PACIFIC RAILROAD IS SHOWN ON SURVEY AD20-14 AT A WIDTH OF 75.00 FEET, 37.50' ON EITHER SIDE OF CENTER LINE. ADDITIONAL RIGHT OF WAY WAS ACQUIRED BY THE OREGON STATE HIGHWAY DEPARTMENT FROM J.E. SMITH ADDITION LOTS ADJOINING DEWEY AVENUE AS SHOWN ON OREGON STATE HIGHWAY DEPARTMENT DRAWING 6B-2-21. ADDITIONAL RIGHT OF WAY WAS ALSO ACQUIRED FROM ATKINSON AND HENIGERS ADDITION AS SHOWN ON OREGON DEPARTMENT OF TRANSPORTATION DRAWING 11B-03-20. THE CENTER LINE ALIGNMENT SHOWN ON OREGON STATE HIGHWAY DEPARTMENT DRAWING 7B-7-7 WAS RECREATED AND POSITIONED BY HOLDING THE MIDPOINT BETWEEN THE MONUMENTS FOUND AT POINTS 1263 AND 1264, AND ROTATED TO ALIGN WITH THE "D" ALIGNMENT IN THE VICINITY OF THE RAILROAD UNDERCROSSING AT STATION "D"22+18.66 P.O.T.


INDUSTRIAL AVE. (ABANDONED SUMPTER VALLEY RAILROAD) (DAVID ECCLES RD.)

THERE WAS NOT MUCH EVIDENCE FOUND FOR THE RIGHT OF WAY FOR THE OLD SUMPTER RAILROAD. A RAILROAD MAP NAMED "SUMPTER VALLEY RAILWAY COMPANY INTERCHANGE & SUMPTER VALLEY RAILWAY COMPANY TRACKS" DATED JAN. 31, 1952 BY PHILO ANDERSON WAS FOUND AND POSITIONED BY HOLDING RECORD DISTANCE OF 18 FEET FROM THE EASTERLY BOUNDARY OF CENTER LINE OF INDUSTRIAL DRIVE ESTABLISHED BY HOLDING MONUMENTS FOUND AT POINTS 1281 AND 1282, AND HOLDING 20 FEET FROM THE MONUMENT FOUND AT POINT 1229. THE RECORD SHAPE OF THE PROPERTY SOUTHERLY OF INDUSTRIAL AVENUE, EASTERLY OF WHITNEY HIGHWAY, WESTERLY OF FOURTH STREET AND NORTHERLY OF INDIANA STREET SHOWN ON SURVEY NUMBER 09-40-0480 WAS RECREATED AND POSITIONED BY HOLDING THE MONUMENT FOUND AT POINT 1228 AND ROTATED TO HOLD THE CENTER LINE OF INDIANA STREET. THE WESTERLY LINE OF FOURTH STREET ADJACENT TO SAID PROPERTY WAS ADJUSTED SLIGHTLY TO HOLD THE CENTER LINE MONUMENT FOUND AT THE INTERSECTION OF FOURTH STREET WITH GRACE STREET (POINT 1261). THE NORTHERLY LINE OF SAID PROPERTY WAS OFFSET 49.98' THROUGH CENTER LINE MONUMENT 1229 TO RECREATE THE AHEAD TANGENT FOR INDUSTRIAL AVENUE, WHICH WAS EXTENDED NORTHWESTERLY TO INTERSECT WITH THE CENTER OF FIFTH STREET. RECORD DEGREE OF RAILROAD CURVE WAS HELD TO RECREATE THE CURVES. STATIONING WAS HELD AT STATION "S"54+79.00 P.C.

- ABBREVIATIONS
 CS = COUNTY SURVEY
 FD = FOUND
 ODOT = OREGON DEPARTMENT OF TRANSPORTATION
 RPC = RED PLASTIC CAP
 YPC = YELLOW PLASTIC CAP

REGISTERED PROFESSIONAL LAND SURVEYOR

 OREGON
 JAN. 14, 2003
 BRET N. ELITHORP
 63148
 EXPIRES: 12-31-2021

FILED April 28, 2021
 BAKER COUNTY SURVEYOR
 SURVEY NO. 9-40-823

OREGON DEPARTMENT OF TRANSPORTATION
 HORIZONTAL CONTROL, RECOVERY AND RETRACEMENT MAP
 BAKER-COPPERFIELD HWY. (OR7)(MAIN ST.): CAMPBELL TO BROADWAY
 LA GRANDE-BAKER HWY. (US30): 10TH TO S. BRIDGE ST.
 WHITNEY HWY. (DEWEY ST.): AUBURN TO INDIANA
 BAKER COUNTY

 ODOT REGION 5 TECH CENTER
 3012 ISLAND AVENUE
 LA GRANDE, OR 97850
 KEY NO. 21494
 APRIL 27, 2021
 NO SCALE
 SHEET 1 OF 23