

LOT LINE ADJUSTMENT

BASIS OF BEARING

True geodetic North at the corner common to Sections 8, 9, 16 and 17, Township 9 South, Range 40 East of the Willamette Meridian, as determined by GPS observation

SCALE: 1"=60'

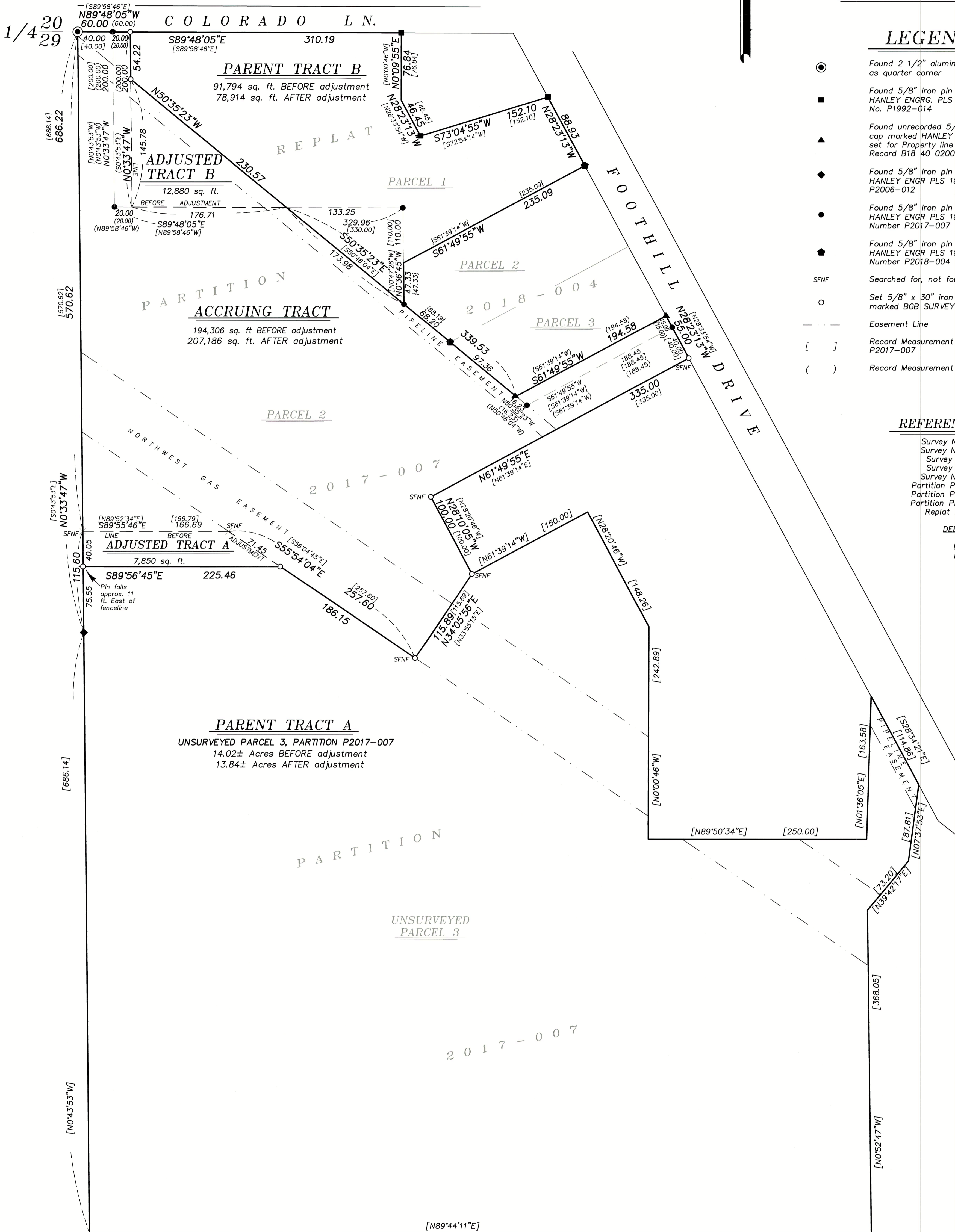
LEGEND

- Found 2 1/2" aluminum capped pipe accepted as quarter corner
- Found 5/8" iron pin with plastic cap marked HANLEY ENGR. PLS 1206 set by Partition Plat No. P1992-014
- ▲ Found unrecorded 5/8" iron pin with plastic cap marked HANLEY ENGR PLS 1817 presumed set for Property line adjustment found in Deed Record B18 40 0200
- ◆ Found 5/8" iron pin with plastic cap marked HANLEY ENGR PLS 1817, set by Partition Plat P2006-012
- Found 5/8" iron pin with plastic cap marked HANLEY ENGR PLS 1817 set by Partition Plat Number P2017-007
- Found 5/8" iron pin with plastic cap marked HANLEY ENGR PLS 1817 set by Partition Plat Number P2018-004
- SFNF Searched for, not found
- Set 5/8" x 30" iron pin with plastic cap marked BGB SURVEY MARKER
- Easement Line
- [] Record Measurement as per Partition Plat P2017-007
- () Record Measurement as per Deed

REFERENCE MATERIAL

Survey Number 9-40-150BC
 Survey Number 9-40-360MP
 Survey Number 9-40-435
 Survey Number 9-40-436
 Survey Number 9-40-622MP
 Partition Plat Number P1990-001
 Partition Plat Number P1992-014
 Partition Plat Number P2017-007
 Replat Number P2018-004

DEED REFERENCES
 B18 40 0191
 B18 47 0054
 B21 02 0143



NARRATIVE

This survey was done at the request of Eva Henes, on behalf of Eagle Eye Ventures, LLC, owner of the land within. Ms. Henes wanted the lines adjusted as shown hereon. Extérieurs of the property were placed by Partition Plat P2017-007, Replat No. 2018-004, and a lot line adjustment of which I can find no recorded survey. I recover the monuments as shown and find them to be harmonious with record measurements. Along the South line of Parcel 2, I find all monuments to have been removed. I place them at record position, as per Partition P2017-007, rotated to my basis of bearing. I place the division lines at the direction of MS. Henes. I find no unusual conditions with this survey.

REGISTERED
 PROFESSIONAL
 LAND SURVEYOR

 OREGON
 JEFFREY S. HSU
 83571
 Renewal Date: June 30, 2023

FILED March 22, 2022
 BAKER COUNTY SURVEYOR
 SURVEY NO. 9-40-834

 BAGETT, GRIFFITH & BLACKMAN 2006 Adams Avenue, LaGrande, Oregon Map of Survey Situated in the Northwest quarter corner of the Northeast quarter of Section 29, Township 9 South, Range 40 East of the Willamette Meridian, Baker City, Oregon BAKER COUNTY, OREGON	
SURVEYED FOR	Eva Henes
SURVEYED BY	J. S. H.
Scale: 1" = 60'	Drawn by: J. S. H. Jan-Mar 2022