

REFERENCE MATERIAL

- | | |
|-------------------------|-----------------------------------|
| Survey Number 9-40-35BC | Survey Number 9-40-731 |
| Survey Number 9-40-38 | Survey Number 9-40-830 |
| Survey Number 9-40-68 | Partition Plat 1994-002 |
| Survey Number 9-40-394 | Partition Plat 1992-012 |
| Survey Number 9-40-406 | Plat of Elkhorn Vista Subdivision |
| Survey Number 9-40-445 | Plat of Meadowbrook Subdivision |
| Survey Number 9-40-536 | ODOT strip map 9B-1-26 |
| Survey Number 9-40-543 | ODOT strip map 9B-3-22 |
| Survey Number 9-40-571 | |
| Survey Number 9-40-687 | DEED REFERENCES |
| Survey Number 9-40-706 | 14 18 0130 |
| Survey Number 9-40-727 | B04 04 0173 |
| Survey Number 9-40-730 | 82 20 076 |

NARRATIVE

This survey was done at the request of Mike Hutton, owner of the land within. Mr. Hutton wanted to monument the exteriors of his property in preparation for fencing. I recover monuments as shown.

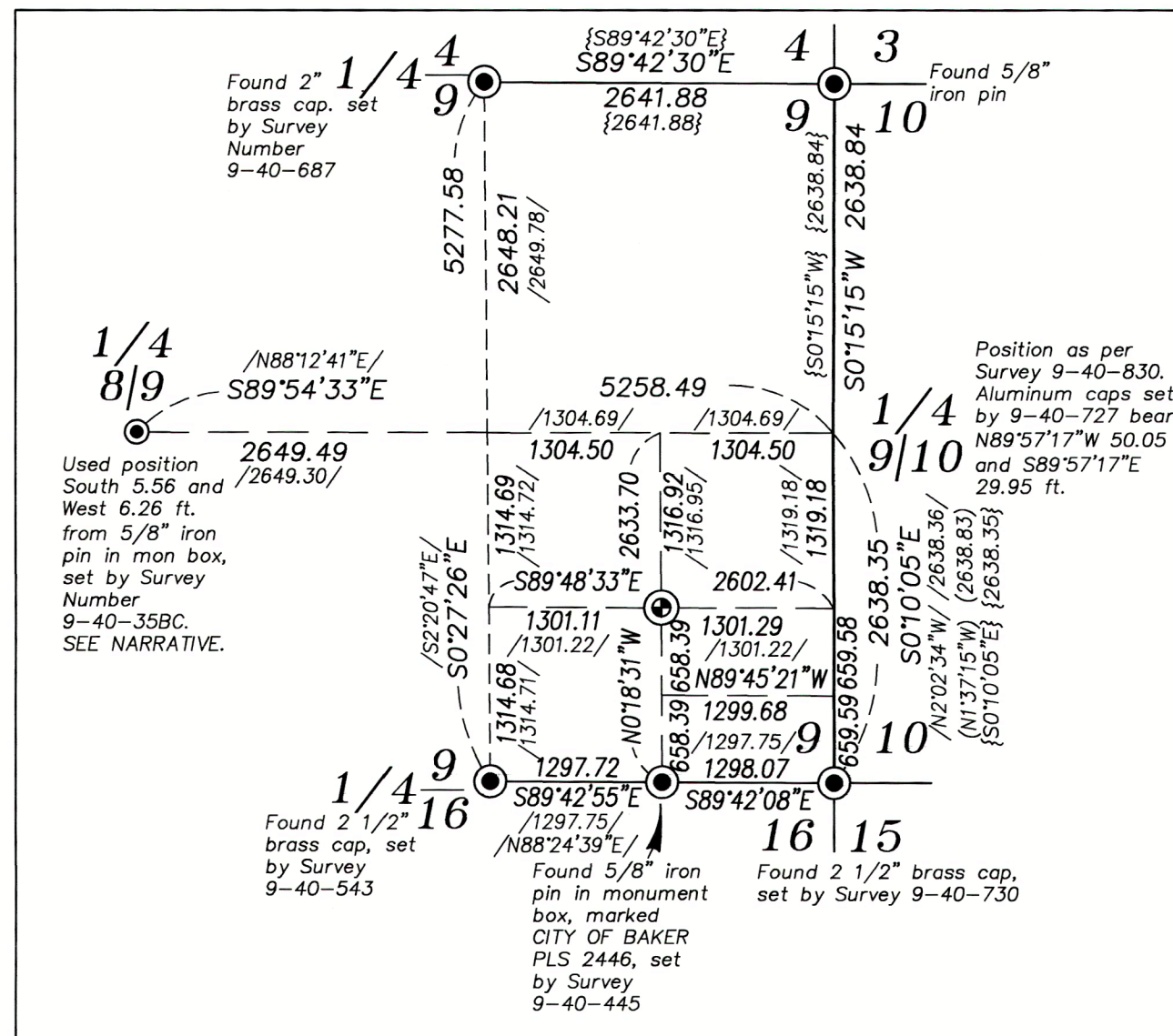
The West quarter corner of Section 9 is an iron pin in a monument box, originally set by Lagier in Survey 9-40-35BC in his subdivision of Section 8. His method of setting this monument is vague and it remains uncertain what evidence was used to place this corner. In Survey 9-40-68, William Hanley used a different position to subdivide Section 9. His method of placing this corner, as well as the evidence found is equally vague. Subsequent surveys conducted by Hanley Engineering in Section 9 appear to use the 9-40-68 position of the quarter corner (9-40-394, 9-40-406, Meadowbrook Subdivision). Surveys by Cummings in the SW 1/4 of Section 9 accept pins set by Survey 9-40-68. James Hambleton appear to have used the iron pin position in Survey 9-40-38 and in the subdivision of Section 9 in Survey 9-40-687 rather than the Hanley position. In the plat of Elkhorn Vista Subdivision, Tom Hanley notes the difference between the two positions. Survey Number 9-40-394 set the Southeast 1/16th corner of Section 9. The position of this is harmonious with the placement of the corner as per the 9-40-68 Hanley survey. To maintain harmony within this quarter section, I utilize the offset position from the Lagier pin as noted on the Elkhorn Subdivision plat for the West quarter corner position. The difference between the two positions, as it pertains to this property, amounts to about 0.18 ft. at the Northwest corner of this property, a relatively minimal amount. For future section subdivision purposes, however, a detailed study should be conducted to determine the placement of a definitive West quarter corner position.

The East quarter corner position was placed in Survey 09-40-727 by retracement of Partition Plat 1994-002. I retraced this line and used the position as per 09-40-727 in doing Survey Number 9-40-830. This is the same position held in this survey.

The East sixteenth corner on the South line of the Section was set by 9-40-445. I hold the monument position over a computed sixteenth corner position. Differences are minimal.

I subdivide the section as per BLM Manual of Instructions 2009. I hold monuments set by Surveys 9-40-927 and 9-40-731 for the Best Frontage Road right of way. I hold found State Highway right of way pins for the Interstate 84 right of way.

I find no other unusual conditions with this survey.



**SECTION SUBDIVISION
SCALE 1"=1320'**

FILED February 16, 2022

BAKETT, GRIFFITH & BLACKMAN
CITY OF BAKER
PLS 2446, set by Survey 9-40-445

SURVEY NO. 9-40-833

BASIS OF BEARING

True geodetic North at the corner common to Sections 8, 9, 16 and 17, Township 9 South, Range 40 East of the Willamette Meridian, as determined by GPS observation

SCALE: 1"=100'

LEGEND

- Found monument as described, accepted as aliquot corner, unless otherwise noted
- ⊙ Found 5/8" iron pin with plastic cap marked HANLEY ENGR PLS 1206, set by Survey Number 9-40-394
- ▲ Found 5/8" iron pin with plastic cap marked HANLEY ENGR PLS 1206, set by Partition Plat 1992-012
- Found 5/8" iron pin with 1 1/2" aluminum cap marked APA OR60000LS, set by Survey Number 9-40-727
- Found 5/8" iron pin with 1 1/2" aluminum cap marked APA WA41295 OR2849, set by Survey Number 9-40-731
- ⊙ Found 5/8" iron pin, with 1 1/2" aluminum cap marked STATE HWY, set by ODOT Strip Map 9B-1-26
- Set 5/8"x30" iron pin with plastic cap marked BGB SURVEY MARKER
- Centerline
- () Record measurement as per Partition Plat 1992-012
- / / Record measurement as per Survey Number 9-40-394
- [] Record measurement as per Survey Number 9-40-731
- { } Record measurement as per Survey Number 9-40-830

REGISTERED
**PROFESSIONAL
LAND SURVEYOR**

[Signature]

OREGON
JUNE 2, 2010
JEFFREY S. HSU
83571

Renewal Date: June 30, 2023

BAGETT, GRIFFITH & BLACKMAN
2006 Adams Avenue, LaGrande, Oregon
Map of Survey

Situated in the Southeast quarter of Section 9,
Township 9 South, Range 40 East of the
Willamette Meridian

BAKER COUNTY, OREGON

SURVEYED FOR	Mike Hutton
SURVEYED BY	J. S. H.
Scale: 1"=100'	Drawn by: J. S. H. Feb. 2022

