

CERTIFIED RECORD OF LAND CORNER MONUMENTATION

HISTORY OF ORIGINAL CORNER MONUMENTATION:

THE ORIGINAL CORNER WAS OF UNKNOWN ORIGIN.

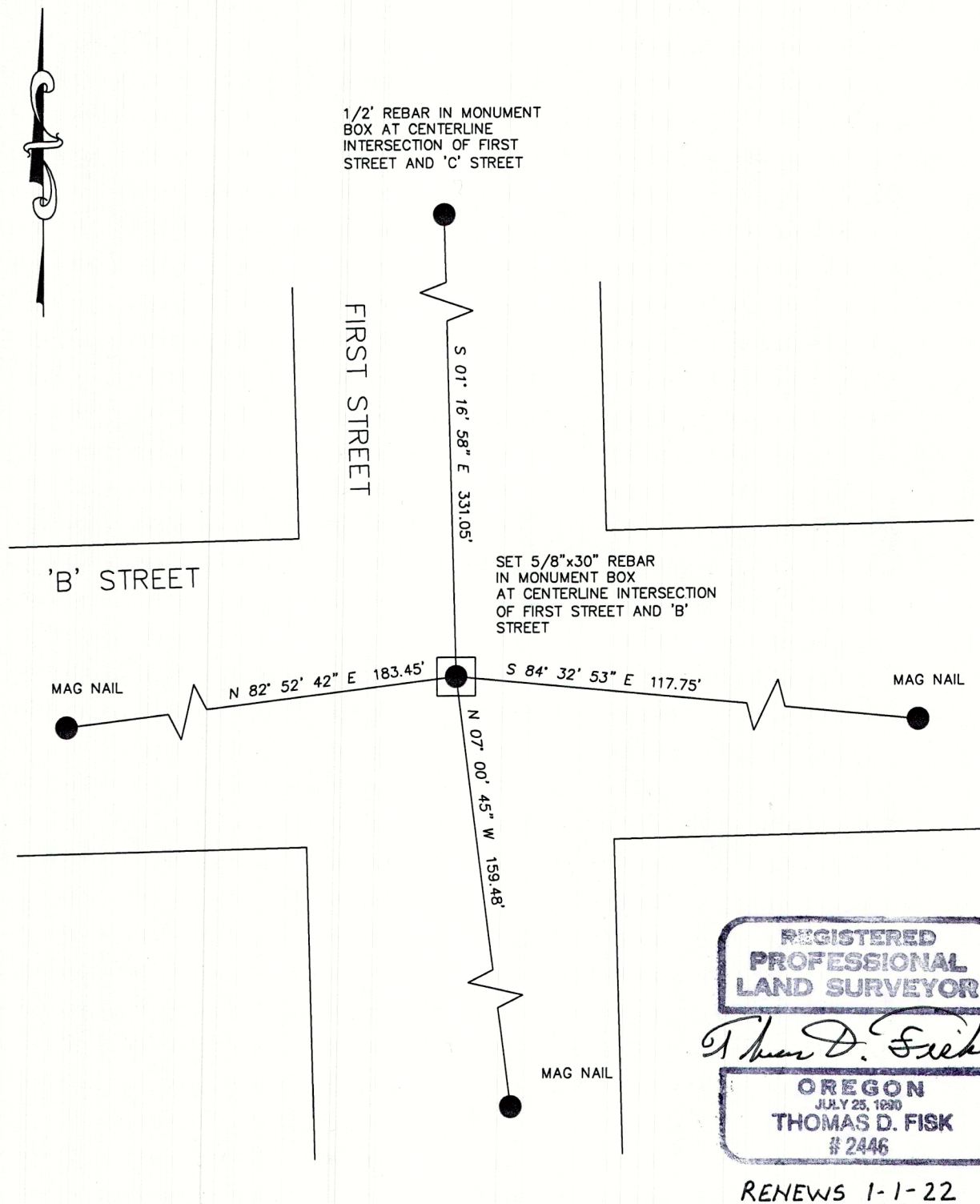
DESCRIPTION OF EVIDENCE FOUND:

AT THE CENTERLINE INTERSECTION OF FIRST STREET AND 'B' STREET, A 1/2" DIAMETER REBAR WAS FOUND IN A MONUMENT BOX. ALTHOUGH THIS IS A GENERALLY ACCEPTED MONUMENT, NO JUDGEMENT AS TO ITS VALIDITY OR MEANING IS MADE.

CORNER RESTORATION WORK PERFORMED:

PRIOR TO STORM SEWER MAIN LINE CONSTRUCTION, REFERENCES WERE MADE. AFTER STORM SEWER MAIN LINE CONSTRUCTION WAS COMPLETED AND ON APRIL 21, 2021, A 5/8" X 30" REBAR WITH YELLOW PLASTIC CAP MARKED "CITY OF BAKER PLS 2446", WAS SET 4" BELOW THE SURFACE OF THE ROAD, INSIDE A MONUMENT BOX, IN THE IDENTICAL POSITION OF THE PREVIOUS MONUMENT. SEE SKETCH BELOW FOR THE CORNER LOCATION.

LOCATED IN THE SE1/4NE1/4 OF SECTION 17, TOWNSHIP 9 SOUTH, RANGE 40 EAST, W.M.



FILED May 12, 2021
BAKER COUNTY SURVEYOR
SURVEY NO. 9-40-825