

# LOT LINE ADJUSTMENT

## BASIS OF BEARING

The East line of the Northeast quarter of the Northwest quarter being S0°43'53"E, as per Partition Plat P2006-012 (Survey Number 09-40-622MP)

SCALE: 1" = 60'

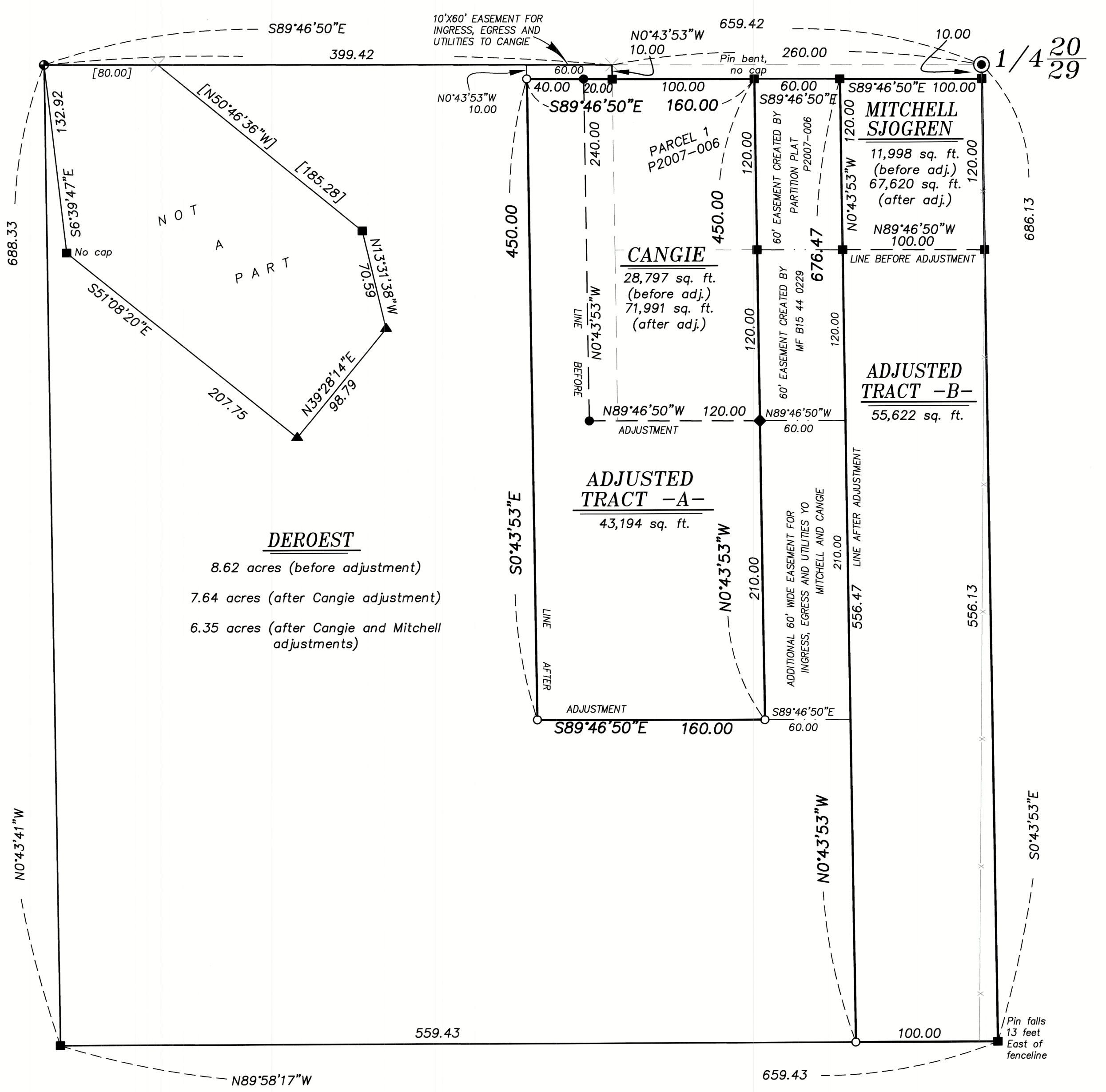
## LEGEND

- Found 2 1/2" aluminum cap monument
- Found 5/8" iron pin with plastic cap marked HANLEY ENGR PLS 1817 set by Partition Plat 2007-006 or 2006-012 (Survey Number 09-40-622MP)
- ◆ Found 5/8" iron pin with plastic cap marked BENCHMARK LAND SURVEYING, set by Survey Number 09-40-0723
- Found 5/8" iron pin with plastic cap marked BENCHMARK LAND SURVEYING, set by Survey Number 09-40-0752
- ▲ Found 5/8" iron pin with plastic cap marked HANLEY ENGR PLS 1206, set by Survey Number 09-40-65
- Found 1/2" iron pin with plastic cap set by Survey Number 09-40-0062BC
- × Corner of record, not searched for
- Set 5/8" x 30" iron pin with plastic cap marked BGB SURVEY MARKER
- Fenceline
- - - Easement Line
- [ ] Record measurement as per Survey Number 09-40-622MP

## REFERENCE MATERIAL

Survey Number 09-40-062BC  
 Survey Number 09-40-0065  
 Survey Number 09-40-0723  
 Survey Number 09-40-0752  
 Partition Plat P2006-012  
 Partition Plat P2007-006

DEED REFERENCES  
 Document B15 44 0229  
 Document B15 16 0122  
 Document B16 37 0088  
 Document B20 04 0101  
 Document 85 42 007  
 Document 82 30 048



### DEROEST

8.62 acres (before adjustment)  
 7.64 acres (after Cangie adjustment)  
 6.35 acres (after Cangie and Mitchell adjustments)

### NARRATIVE

This survey was done at the request of Vic Cangie, owner of one of the parcels involved in these lot line adjustments. The purpose of this survey is to monument the property line adjustments conditionally approved by Baker City Planning Case No. PLA-20-076 and LLA-20-077 and to recover monuments set by P2006-012 and P2007-006 and find these to be harmonious with said plats. I accept these monuments in place. I place the new adjusted line at the direction of the landowners. Fencelines are off as shown. I find no unusual conditions with this survey.

REGISTERED  
 PROFESSIONAL  
 LAND SURVEYOR

OREGON  
 JUNE 2, 2010  
 JEFFREY S. HSU  
 83571

Renewal Date: June 30, 2021

FILED August 11, 2020  
 BAKER COUNTY SURVEYOR  
 SURVEY NO. 9-40-804

BAGETT, GRIFFITH & BLACKMAN  
 2006 Adams Avenue, LaGrande, Oregon  
 Map of Survey

Situated in the Northeast quarter of the Northwest quarter of Section 29, Township 9 South, Range 40 East of the Willamette Meridian

BAKER COUNTY, OREGON

SURVEYED FOR	Vic Cangie
SURVEYED BY	J. S. H.
Scale: 1" = 60'	Drawn by: J. S. H. Aug. 2020