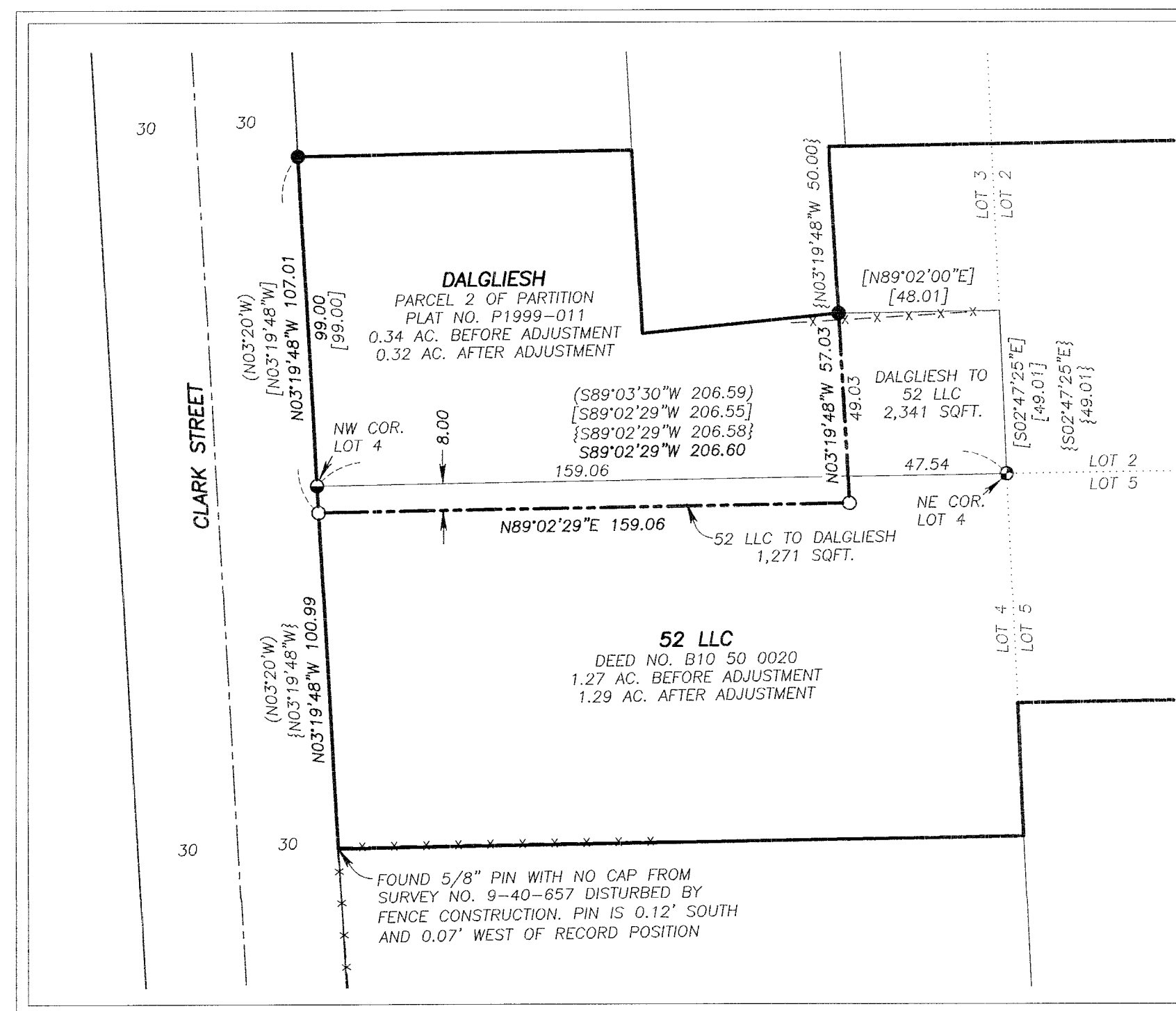
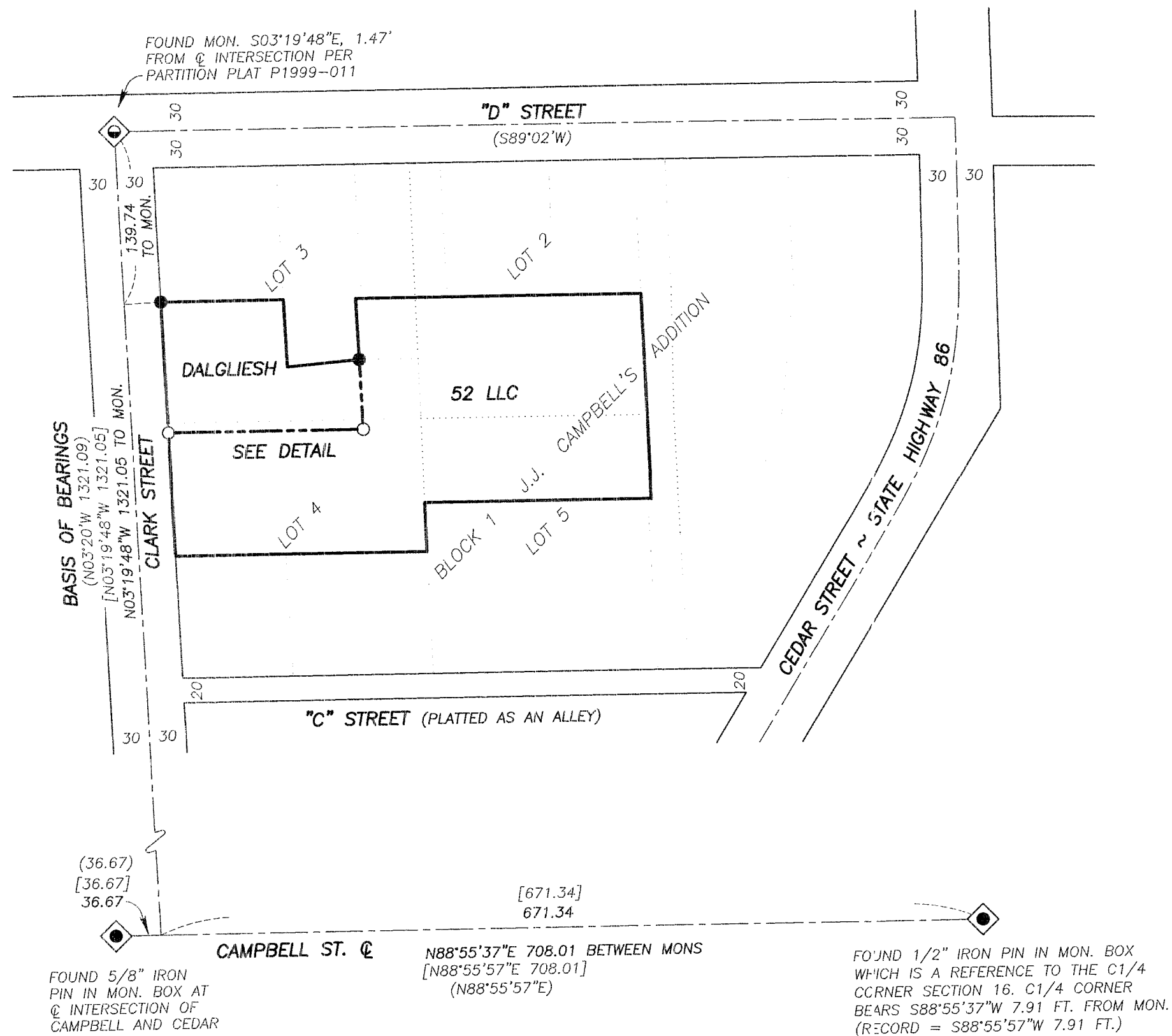


**DETAIL**

SCALE: 1"=40'



**LEGEND**

- ◊ FOUND 5/8" IRON PIN WITH ATTACHED ALUMINUM CAP MARKED "ODOT" IN A CITY MONUMENT BOX FROM SURVEY NO. 9-40-682
- ◆ FOUND MONUMENT IN A CITY MONUMENT BOX AS NOTED
- FOUND 5/8" IRON PIN WITH NO CAP FROM SURVEY NO. 9-40-130BC
- ⊙ FOUND 5/8" IRON PIN WITH YELLOW PLASTIC CAP MARKED "HANLEY ENGRG." FROM SURVEY NO. 9-40-130BC
- FOUND 5/8" IRON PIN WITH ATTACHED YELLOW PLASTIC CAP MARKED "HANLEY ENGR. PLS 1817" FROM PARTITION PLAT NO. P1999-011
- SET 5/8"x30" IRON PIN WITH ATTACHED YELLOW PLASTIC CAP MARKED "BENCH-MARK SURVEYING"
- ( ) RECORD BEARING AND DISTANCE FROM SURVEY NO. 9-40-130BC
- [ ] RECORD BEARING AND DISTANCE FROM PARTITION PLAT NO. P1999-011
- { } RECORD BEARING AND DISTANCE FROM SURVEY NO. 9-40-657
- X—X FENCE LINE
- ..... LOT LINE FROM J.J. CAMPBELL'S ADDITION
- PROPERTY LINE AFTER ADJUSTMENT

**NARRATIVE**

THIS SURVEY WAS PERFORMED AT THE REQUEST OF DAVID HAYS ON BEHALF OF 52 LLC WITH THE PURPOSE OF MONUMENTING A PROPOSED PROPERTY LINE ADJUSTMENT, APPROVED BY THE BAKER CITY-COUNTY PLANNING DEPARTMENT PER THE FINAL REPORT FOR CITY CASE NO. PLA-20-050.

A SEARCH WAS MADE OF THE AVAILABLE RECORDS. FIELD MEASUREMENTS WERE MADE TO LOCATE APPURTENANT MONUMENTS FROM SURVEY NO.'S 9-40-130BC, 9-40-657 AND 9-40-682 AND PARTITION PLAT NO. P1999-011. UNLESS OTHERWISE NOTED, ALL FOUND MONUMENTS WERE ACCEPTED.

NEW MONUMENTS WERE SET AT LOCATIONS ACCORDING TO THE EVIDENCE FOUND AND ACCORDING TO THE BAKER CITY-COUNTY PLANNING APPROVAL.

**REFERENCES**

- RECORD MAP OF SURVEY NO.'S 9-40-130BC, 9-40-657 AND 9-40-682
- DEED RECORD INSTRUMENT NO.'S B07 15 0190 & B10 50 0020
- PARTITION PLAT NO. P1999-011
- THE PLAT OF J.J. CAMPBELL'S ADDITION



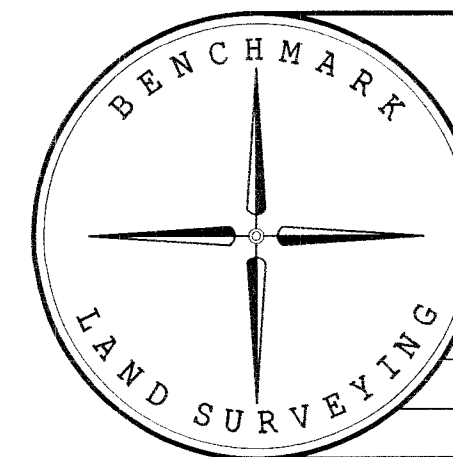
**BASIS OF BEARINGS**

PARTITION PLAT NO. P1999-011  
CLARK STREET BEARS  
N.03°19'48"W., AS SHOWN

REGISTERED  
PROFESSIONAL  
LAND SURVEYOR

*Jason L. Hatfield*  
OREGON  
NOVEMBER 30, 2007  
JASON L. HATFIELD  
#69454

EXPIRES: 6/30/2021



BENCHMARK LAND SURVEYING  
217 N. CANYON BLVD. JOHN DAY, OREGON  
1207 DEWEY AVE., BAKER CITY, OREGON  
541-575-1251 ~ 541-523-5852

MAP OF SURVEY  
A PROPOSED PROPERTY LINE ADJUSTMENT  
IN LOTS 3 AND 4, BLOCK 1 OF J.J. CAMPBELL'S ADDITION  
SITUATED IN THE SE1/4NW1/4 SECTION 16, T.9S., R.40E., W.M.,  
BAKER CITY, BAKER COUNTY, OREGON

SURVEYED FOR	52 LLC	
SURVEYED BY	JLH	6/24/2020
SCALE: 1"=100'	DRAWN BY: JLH	