

HANLEY ENGINEERING, INC.
 P.O. BOX 701, 2043 MAIN STREET, BAKER CITY, OREGON 97814 (541) 523-3803

MAP OF SURVEY

IN BLOCK "B" OF FISHER'S ADDITION TO
 BAKER CITY, BAKER COUNTY, OREGON
 MARCH, 2020

NARRATIVE

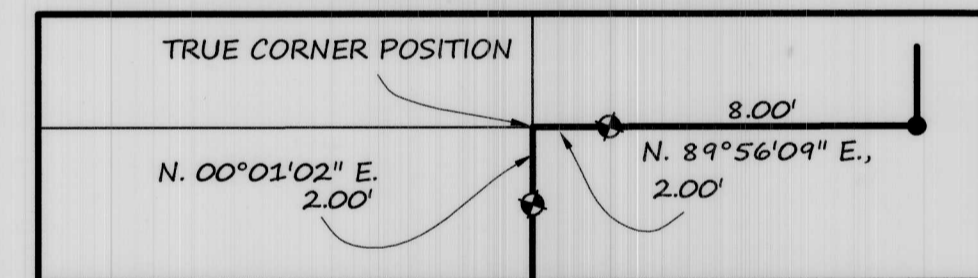
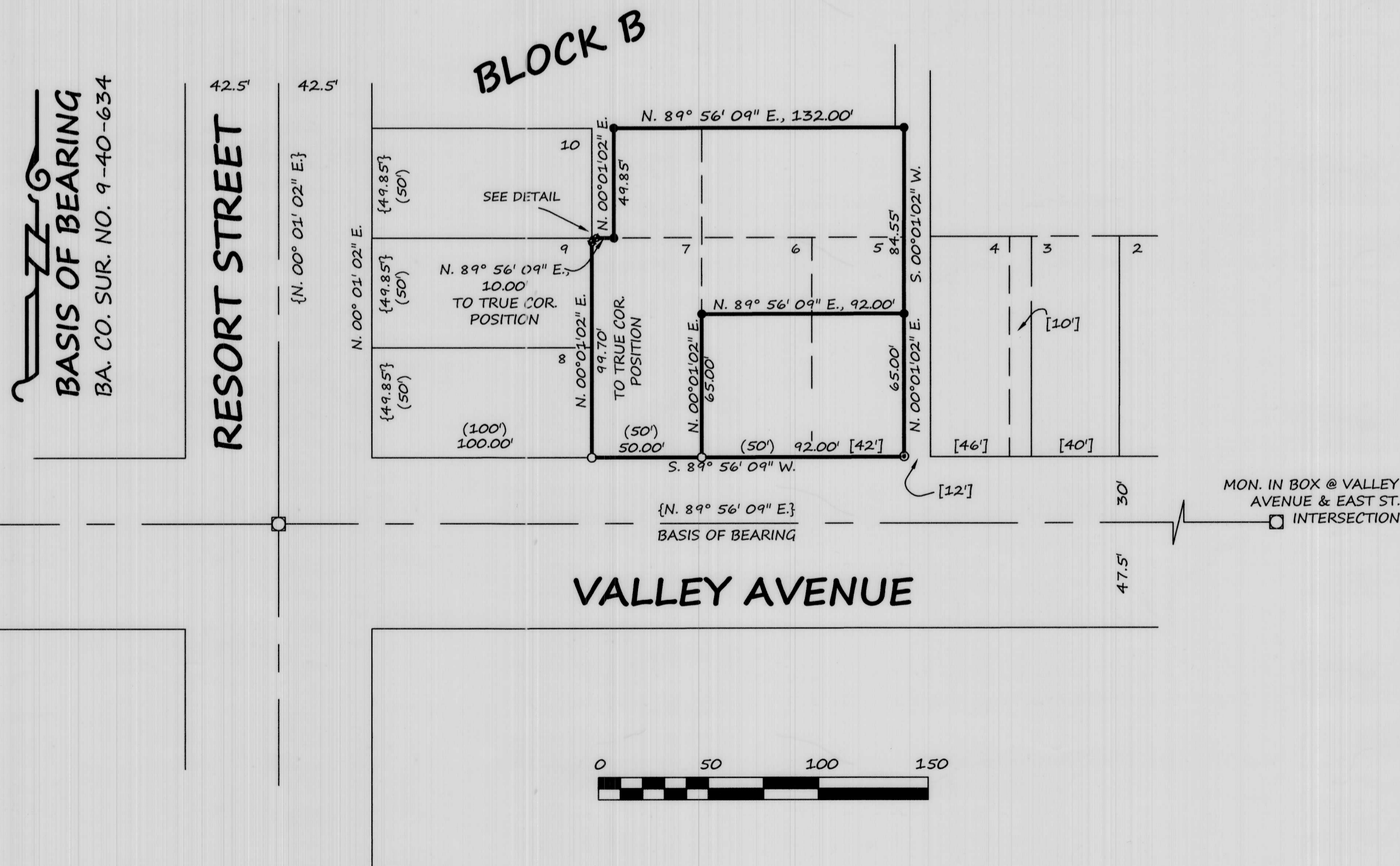
The purpose of this survey for Logan and Chelsa Mitchell is to mark on the ground with proper monumentation the boundary lines of the parcel described in Baker County Deeds No. B13 31 0088 and B19 26 004 . The Southwest corner and the Southeast corner of Baker County Survey No. 9-40-651 were recovered.

REFERENCES

BAKER COUNTY SURVEY NO. 90-40-508
 BAKER COUNTY SURVEY NO. 90-40-634
 BAKER COUNTY SURVEY NO. 90-40-651
 BAKER COUNTY DEED NO. B05 29 0209
 BAKER COUNTY DEED NO. B05 29 0211
 BAKER COUNTY DEED NO. B08 24 0064
 BAKER COUNTY DEED NO. B13 31 0088
 BAKER COUNTY DEED NO. B19 26 0044

LEDGEND

- SET 5/8" X 30" REBAR WITH PLASTIC CAP MARKED "HANLEY ENGR. PLS 1817"
- SET 5/8" X 30" REBAR WITH ORANGE PLASTIC CAP MARKED "REFERENCE MONUMENT"
- FOUND, 5/8" REBAR WITH PLASTIC CAP MARKED "HANLEY ENGR. PLS 1817"
- FOUND, 5/8" REBAR WITH ALUMINUM CAP MARKED "APA OR 2537 WA 35140"
- FOUND, MONUMENT IN BOX
- () RECORD DATA PER FISHER'S ADDITION PLAT
- [] RECORD DATA PER BA. CO. SURV. NO. 9-40-508
- { } RECORD DATA PER BA. CO. SURV. NO. 9-40-634



DETAIL
 1"=5'



REGISTERED
 PROFESSIONAL
 LAND SURVEYOR
Thomas J. Hanley
 OREGON
 JULY 13, 1979
 THOMAS J. HANLEY
 1817

FILED March 10, 2020
 BAKER COUNTY SURVEYOR
 SURVEY NO. 9-40-195

Renews June 30, 2021