

CERTIFIED RECORD OF LAND CORNER MONUMENTATION

HISTORY OF ORIGINAL CORNER MONUMENTATION:

THE ORIGINAL CORNER WAS SET IN THE US TOWNSITE OF BAKER.

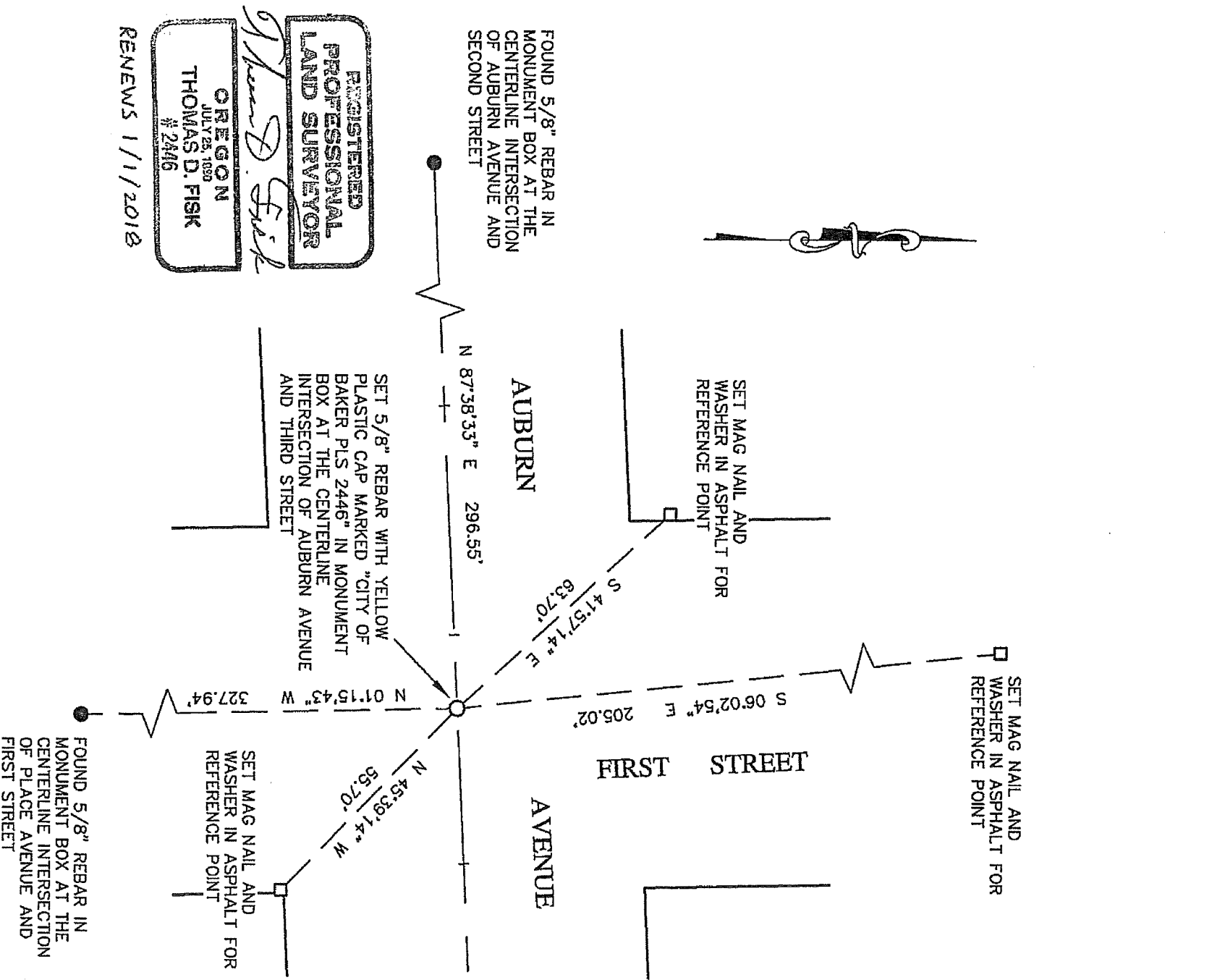
DESCRIPTION OF EVIDENCE FOUND:

AT THE CENTERLINE INTERSECTION OF AUBURN AVENUE AND 1ST STREET, FOUND A 5/8" DIAMETER REBAR WITH AN UNREADABLE CAP WITH PUNCH MARK IN A MONUMENT BOX. ALTHOUGH THIS IS A GENERALLY ACCEPTED MONUMENT, NO JUDGEMENT AS TO ITS VALIDITY OR MEANING IS MADE.

CORNER RESTORATION WORK PERFORMED:

PRIOR TO STREET CONSTRUCTION, REFERENCES WERE MADE. AFTER STREET CONSTRUCTION WAS COMPLETED AND ON OCTOBER 31, 2017, A 5/8" X 30" REBAR WITH YELLOW PLASTIC CAP MARKED "CITY OF BAKER PLS 2446", WAS SET 4" BELOW THE SURFACE OF THE ROAD, INSIDE A MONUMENT BOX, IN THE IDENTICAL POSITION OF THE PREVIOUS MONUMENT. SEE SKETCH BELOW FOR THE CORNER LOCATION.

LOCATED IN THE SE1/4SE1/4 OF SECTION 17, TOWNSHIP 9 SOUTH, RANGE 40 EAST, W.M.



FILED Nov. 28, 2017
 BAKER COUNTY SURVEYOR
 SURVEY NO. 9-40-762A