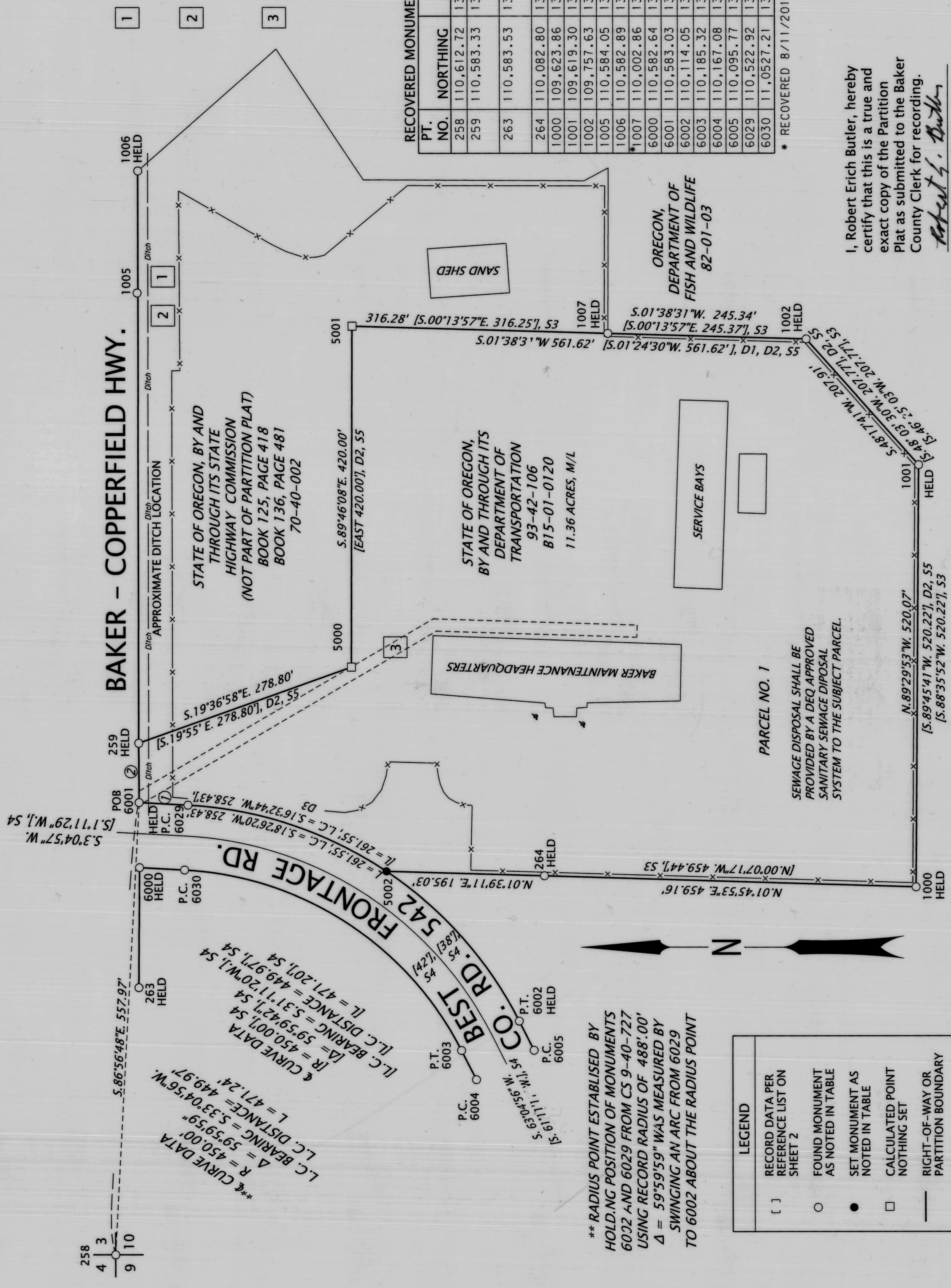


PARTITION PLAT NO. P2017-006

RECORD EASEMENTS AFFECTING THIS PROPERTY

- 1 AN EASEMENT FOR THE WILLIAMS-MACDOUGALL DITCH RECORDED DECEMBER 10, 1909 IN DEED BOOK 71, PAGE 361.
- 2 A DITCH EASEMENT TO H. E. WELLMAN RECORDED DECEMBER 10, 1909 IN DEED BOOK 71, PAGE 362 ALONG THE NORTH LINE OF THE NORTHWEST QUARTER OF SECTION 10, T. 9 S., R. 40 E. W.M.
- 3 A 15 FEET WIDE RIGHT OF WAY EASEMENT TO OREGON TRAIL ELECTRIC CONSUMERS COOPERATIVE, INC. RECORDED JULY 15, 2009 IN DEED 809-28-0314.



RECOVERED MONUMENT LIST (RECOVERED 8/07/2017)

PT. NO.	NORTHING	EASTING	DESCRIPTION & REFERENCE DOCUMENTS
258	110,612.72	137,428.37	FD. 5/8" IRON ROD, 0.5' BELOW ASPHALT SURFACE
259	110,583.33	138,058.58	FD. 5/8" IRON ROD W/1 1/2" ALUM. CAP, ODOT DRG. 9B-3-22
263	110,583.53	137,757.47	FD. 5/8" IRON ROD W/1 1/2" ALUM. CAP, ODOT DRG. 9B-3-22
264	110,082.80	137,894.95	FD. 5/8" IRON ROD W/YPC, BENT, CS 9-40-392MP
1000	109,623.86	137,880.81	FD. 5/8" IRON ROD, BENT, CS 9-40-0421
1001	109,619.30	138,400.86	FD. 5/8" IRON ROD W/1 1/2" ALUM. CAP, CS 9-40-0421
1002	109,757.63	138,556.09	FD. 5/8" IRON ROD W/1 1/2" ALUM. CAP, CS 9-40-0421
1005	110,584.05	138,613.28	FD. 5/8" IRON ROD, BENT, ODOT DRG. 6B-6-15
1006	110,582.89	138,763.71	FD. 5/8" IRON ROD W/1 1/2" ALUM. CAP, CS 9-40-0421
*1007	110,002.86	138,563.12	FD. 5/8" IRON ROD W/1 1/2" ALUM. CAP, CS 9-40-0421
6000	110,582.64	137,905.41	FD. 5/8" IRON ROD W/1 1/2" ALUM. CAP, CS 9-40-727
6001	110,583.03	137,985.51	FD. 5/8" IRON ROD W/1 1/2" ALUM. CAP, CS 9-40-727
6002	110,114.05	137,715.94	FD. 5/8" IRON ROD W/1 1/2" ALUM. CAP, CS 9-40-727
6003	110,185.32	137,679.72	FD. 5/8" IRON ROD W/1 1/2" ALUM. CAP, CS 9-40-727
6004	110,167.08	137,643.69	FD. 5/8" IRON ROD W/1 1/2" ALUM. CAP, CS 9-40-727
6005	110,095.77	137,679.91	FD. 5/8" IRON ROD W/1 1/2" ALUM. CAP, CS 9-40-727
6029	110,522.92	137,982.31	FD. 5/8" IRON ROD W/1 1/2" ALUM. CAP, CS 9-40-727
6030	11,0527.21	137,902.44	FD. 5/8" IRON ROD W/1 1/2" ALUM. CAP, CS 9-40-727

I, Robert Erich Butler, hereby certify that this is a true and exact copy of the Partition Plat as submitted to the Baker County Clerk for recording.

*Robert E. Butler*

REGISTERED PROFESSIONAL LAND SURVEYOR

*Robert E. Butler*

OREGON  
JULY 25, 1955  
ROBERT ERICH BUTLER

EXPIRES: 12/31/2017

OREGON DEPARTMENT OF TRANSPORTATION

ENGLISH

MINOR PARTITION PLAT  
BAKER MAINTENANCE STATION  
BAKER - COPPERFIELD HIGHWAY  
BAKER COUNTY, OREGON

FOR ODOT REGION 5  
3012 ISLAND AVENUE  
LA GRANDE, OR 97850

AUGUST 24, 2017  
SCALE: 1" = 100'  
SHEET 1 OF 2

LEGEND

[ ]	RECORD DATA PER REFERENCE LIST ON SHEET 2
○	FOUND MONUMENT AS NOTED IN TABLE
●	SET MONUMENT AS NOTED IN TABLE
□	CALCULATED POINT NOTHING SET
—	RIGHT-OF-WAY OR PARTITION BOUNDARY
—	EXISTING PROPERTY LINE
---	EXISTING EASEMENT
---	EXISTING PARCEL BOUNDARY
-X-	FENCE

SET MONUMENT LIST (MONUMENT SET 8/31/2017)

PT. NO.	NORTHING	EASTING	DESCRIPTION
5000	110,320.71	138,152.18	CALCULATED POINT, NOTHING SET
5001	110,318.91	138,572.18	CALCULATED POINT, NOTHING SET
5002	110,277.75	137,900.57	SET 5/8" X 30" IRON ROD W/1 1/2" ALUM. CAP

NOTES

- 1 N.03°04'57"E. 60.17' S.01°11'29"W. 60.11'; CALC.I, S4
- 2 N.89°44'31"E. 73.03' S.87°46'17"E. 73.04'; CALC.I, S4

FILED October 16, 2017  
BAKER COUNTY SURVEYOR  
SURVEY NO. 9-10-16