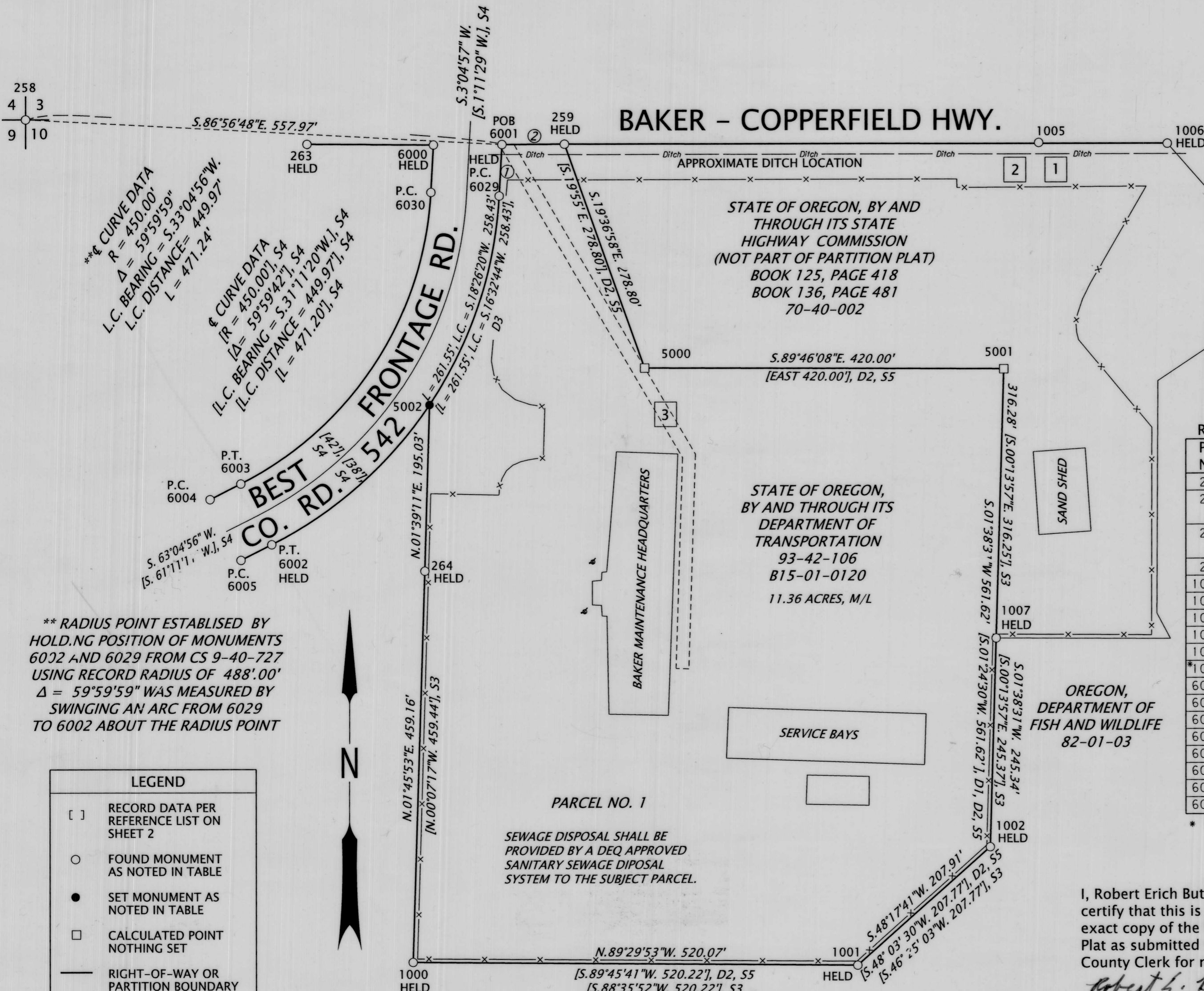


NW1/4 S. 10, T. 9 S., R. 40 E., WM.

PARTITION PLAT NO. P2017-006



RECORD EASEMENTS AFFECTING THIS PROPERTY

- 1 AN EASEMENT FOR THE WILLIAMS-MACDOUGALL DITCH RECORDED DECEMBER 10, 1909 IN DEED BOOK 71, PAGE 361.
- 2 A DITCH EASEMENT TO H. E. WELLMAN RECORDED DECEMBER 10, 1909 IN DEED BOOK 71, PAGE 362 ALONG THE NORTH LINE OF THE NORTHWEST QUARTER OF SECTION 10, T. 9 S., R. 40 E. W.M.
- 3 A 15 FEET WIDE RIGHT OF WAY EASEMENT TO OREGON TRAIL ELECTRIC CONSUMERS COOPERATIVE, INC. RECORDED JULY 15, 2009 IN DEED B09-28-0314.

RECOVERED MONUMENT LIST (RECOVERED 8/07/2017)

PT. NO.	NORTHING	EASTING	DESCRIPTION & REFERENCE DOCUMENTS
258	110,612.72	137,428.37	FD. 5/8" IRON ROD, 0.5' BELOW ASPHALT SURFACE
259	110,583.33	138,058.58	FD. 5/8" IRON ROD W/1 1/2" ALUM. CAP, ODOT DRG. 9B-3-22
263	110,583.53	137,757.47	FD. 5/8" IRON ROD W/1 1/2" ALUM. CAP, ODOT DRG. 9B-3-22
264	110,082.80	137,894.95	FD. 5/8" IRON ROD W/YPC, BENT, CS 9-40-392MP
1000	109,623.86	137,880.81	FD. 5/8" IRON ROD, BENT, CS 9-40-0421
1001	109,619.30	138,400.86	FD. 5/8" IRON ROD W/1 1/2" ALUM. CAP, CS 9-40-0421
1002	109,757.63	138,556.09	FD. 5/8" IRON ROD W/1 1/2" ALUM. CAP, CS 9-40-0421
1005	110,584.05	138,613.28	FD. 5/8" IRON ROD, BENT, ODOT DRG. 6B-6-15
1006	110,582.89	138,763.71	FD. 5/8" IRON ROD W/1 1/2" ALUM. CAP, CS 9-40-0421
1007	110,002.86	138,563.12	FD. 5/8" IRON ROD W/1 1/2" ALUM. CAP, CS 9-40-0421
6000	110,582.64	137,905.41	FD. 5/8" IRON ROD W/1 1/2" ALUM. CAP, CS 9-40-727
6001	110,583.03	137,985.51	FD. 5/8" IRON ROD W/1 1/2" ALUM. CAP, CS 9-40-727
6002	110,114.05	137,715.94	FD. 5/8" IRON ROD W/1 1/2" ALUM. CAP, CS 9-40-727
6003	110,185.32	137,679.72	FD. 5/8" IRON ROD W/1 1/2" ALUM. CAP, CS 9-40-727
6004	110,167.08	137,643.69	FD. 5/8" IRON ROD W/1 1/2" ALUM. CAP, CS 9-40-727
6005	110,095.77	137,679.91	FD. 5/8" IRON ROD W/1 1/2" ALUM. CAP, CS 9-40-727
6029	110,522.92	137,982.31	FD. 5/8" IRON ROD W/1 1/2" ALUM. CAP, CS 9-40-727
6030	11,0527.21	137,902.44	FD. 5/8" IRON ROD W/1 1/2" ALUM. CAP, CS 9-40-727

* RECOVERED 8/11/2017

** RADIUS POINT ESTABLISHED BY HOLDING POSITION OF MONUMENTS 6022 AND 6029 FROM CS 9-40-727 USING RECORD RADIUS OF 488'.00' Δ = 59°59'59" WAS MEASURED BY SWINGING AN ARC FROM 6029 TO 6002 ABOUT THE RADIUS POINT

LEGEND

- [] RECORD DATA PER REFERENCE LIST ON SHEET 2
- FOUND MONUMENT AS NOTED IN TABLE
- SET MONUMENT AS NOTED IN TABLE
- CALCULATED POINT NOTHING SET
- RIGHT-OF-WAY OR PARTITION BOUNDARY
- EXISTING PROPERTY LINE
- EXISTING EASEMENT
- EXISTING PARCEL BOUNDARY
- X- FENCE

SET MONUMENT LIST (MONUMENT SET 8/31/2017)

PT. NO.	NORTHING	EASTING	DESCRIPTION
5000	110,320.71	138,152.18	CALCULATED POINT, NOTHING SET
5001	110,318.91	138,572.18	CALCULATED POINT, NOTHING SET
5002	110,277.75	137,900.57	SET 5/8" X 30" IRON ROD W/1 1/2" ALUM. CAP

NOTES

- ① N.03°04'57"E. 60.17' [S.01°11'29"W. 60.11', CALC.], S4
- ② N.89°44'31"E. 73.03' [N. 87°46'17" E. 73.04', CALC.], S4

I, Robert Erich Butler, hereby certify that this is a true and exact copy of the Partition Plat as submitted to the Baker County Clerk for recording.

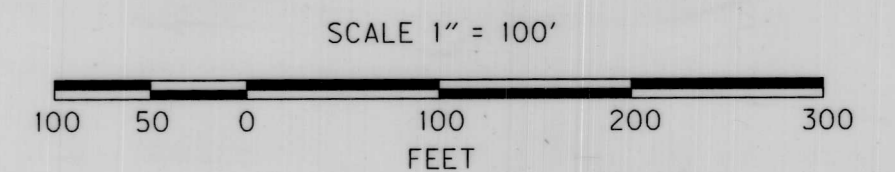
Robert E. Butler

REGISTERED PROFESSIONAL LAND SURVEYOR

Robert E. Butler

OREGON JULY 25, 1995 ROBERT ERICH BUTLER

EXPIRES: 12/31/2017



OREGON DEPARTMENT OF TRANSPORTATION
 ENGLISH
 MINOR PARTITION PLAT
 BAKER MAINTENANCE STATION
 BAKER - COPPERFIELD HIGHWAY
 BAKER COUNTY, OREGON

FOR ODOT REGION 5
 3012 ISLAND AVENUE
 LA GRANDE, OR 97850

AUGUST 24, 2017
 SCALE: 1" = 100'
 SHEET 1 OF 2

FILED October 16, 2017
 BAKER COUNTY SURVEYOR
 SURVEY NO. 9-40-7161