

**NARRATIVE**

THIS SURVEY WAS PERFORMED AT THE REQUEST OF DAN THOMPSON WITH THE PURPOSE OF MONUMENTING A PROPOSED PROPERTY LINE ADJUSTMENT, WHICH WAS APPROVED BY THE BAKER CITY-COUNTY PLANNING DEPARTMENT, CITY CASE NO. PLA-16-101, FINAL REPORT DATED OCTOBER 28, 2016.

THIS PROPERTY LINE ADJUSTMENT WILL SERVE TO ADJUST THE COMMON BOUNDARY BETWEEN "TRACT ONE" AND "TRACT TWO" ON DEED NO. B13470047. IN DECEMBER OF 2013, I PERFORMED A SURVEY OF THE EXTERIOR BOUNDARY OF THESE TRACTS FOR DON AND DAN THOMPSON, WHICH WAS FILED IN THE BAKER COUNTY SURVEYOR'S OFFICE AS SURVEY NO. 9-40-728. SURVEY NO. 9-40-728 PROVIDED THE BASIS OF CONTROL FOR THIS SURVEY.

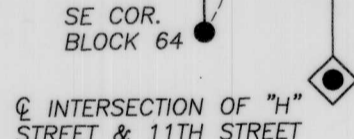
FIELD MEASUREMENTS WERE MADE TO LOCATE MONUMENTS FROM SURVEY NO.'S 9-40-262 AND 9-40-728, WHICH WERE ACCEPTED. A NEW MONUMENT WAS SET TO MONUMENT THE EAST END OF THE ADJUSTED LINE, AS SHOWN.

**BASIS OF BEARINGS**

RECORD SURVEY NO. 9-40-728  
11TH STREET BEARS N.00°32'11"W.  
AS SHOWN

**REFERENCES**

- RECORD MAP OF SURVEY NO.'S 9-40-63BC, 9-40-184, 9-40-262, 9-40-276, 9-40-660MP & 9-40-728
- DEED RECORD INSTRUMENT NO. B13 47 0047
- BAKER CITY ORDINANCE NO.'S 2431 & 3000
- BAKER CITY SURVEY NO. AD 19 16
- PLAT OF OTTENHEIMER'S ADDITION
- PLAT OF B.W. LEVENS' SECOND ADDITION

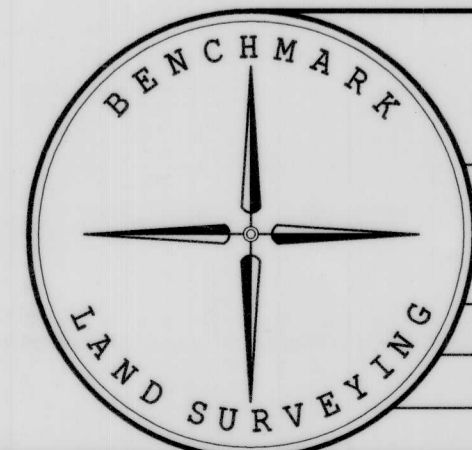


**LEGEND**

- FOUND CENTERLINE MONUMENT: A 3/4" IRON PIN IN A STEEL MONUMENT CASE
- FOUND 3/4" GALV. IRON PIPE AS ACCEPTED ON SURVEY NO.'S 9-40-262 AND 9-4-728. THE PIPE HAD BEEN DISTURBED, WITH THE TOP 12" BENT NORTH. ALSO FOUND A PK NAIL SET AT THE SPIN POINT, WHICH WAS TIED AND ACCEPTED FOR THE CORNER POSITION.
- FOUND 5/8" IRON PIN WITH ATTACHED YELLOW PLASTIC CAP MARKED BENCHMARK SURVEYING, FROM SURVEY NO. 9-40-728
- FOUND PK NAIL IN ASPHALT SURFACE, FROM SURVEY NO. 9-40-728
- ( ) PLAT/DEED RECORD BEARING AND DISTANCE
- [ ] RECORD BEARING AND DISTANCE FROM SURVEY NO. 9-40-728
- (1) LOT NUMBER
- PROPOSED PROPERTY LINE ADJUSTMENT
- x-x CHAIN LINK FENCE
- TRACT 1 TO TRACT 2 = 20,213 SQUARE FEET

FILED Dec. 6, 2016  
BAKER COUNTY SURVEYOR  
SURVEY NO. 9-40-756

REGISTERED PROFESSIONAL LAND SURVEYOR  
*Jason L. Hatfield*  
OREGON  
NOVEMBER 30, 2007  
JASON L. HATFIELD  
#69454  
EXPIRES: 6/30/2017



BENCHMARK LAND SURVEYING 217 N. CANYON BLVD. JOHN DAY, OREGON 2101 MAIN STREET, STE 223 BAKER CITY, OREGON 541-575-1251 ~ 800-699-0516		
MAP OF SURVEY A PROPOSED PROPERTY LINE ADJUSTMENT IN BLOCK 65 AND VACATED "J" STREET, B.W. LEVENS' 2ND ADDITION SITUATED IN THE SE1/4SW1/4 SECTION 8, T.9S., R.40E., W.M., BAKER CITY, BAKER COUNTY, OREGON		
SURVEYED FOR	DON AND DAN THOMPSON	
SURVEYED BY	JLH & MCS	11/21/2016
SCALE: 1"=60'	DRAWN BY: JLH	