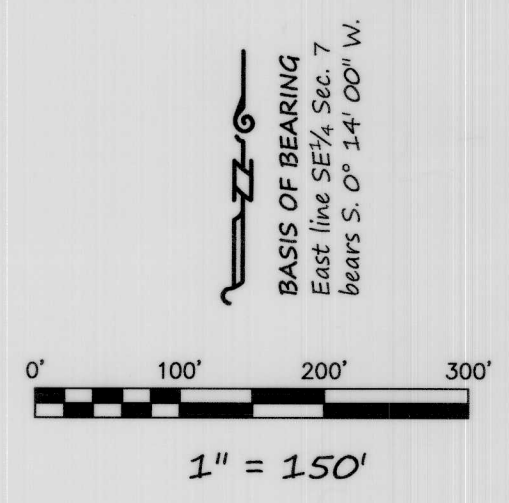
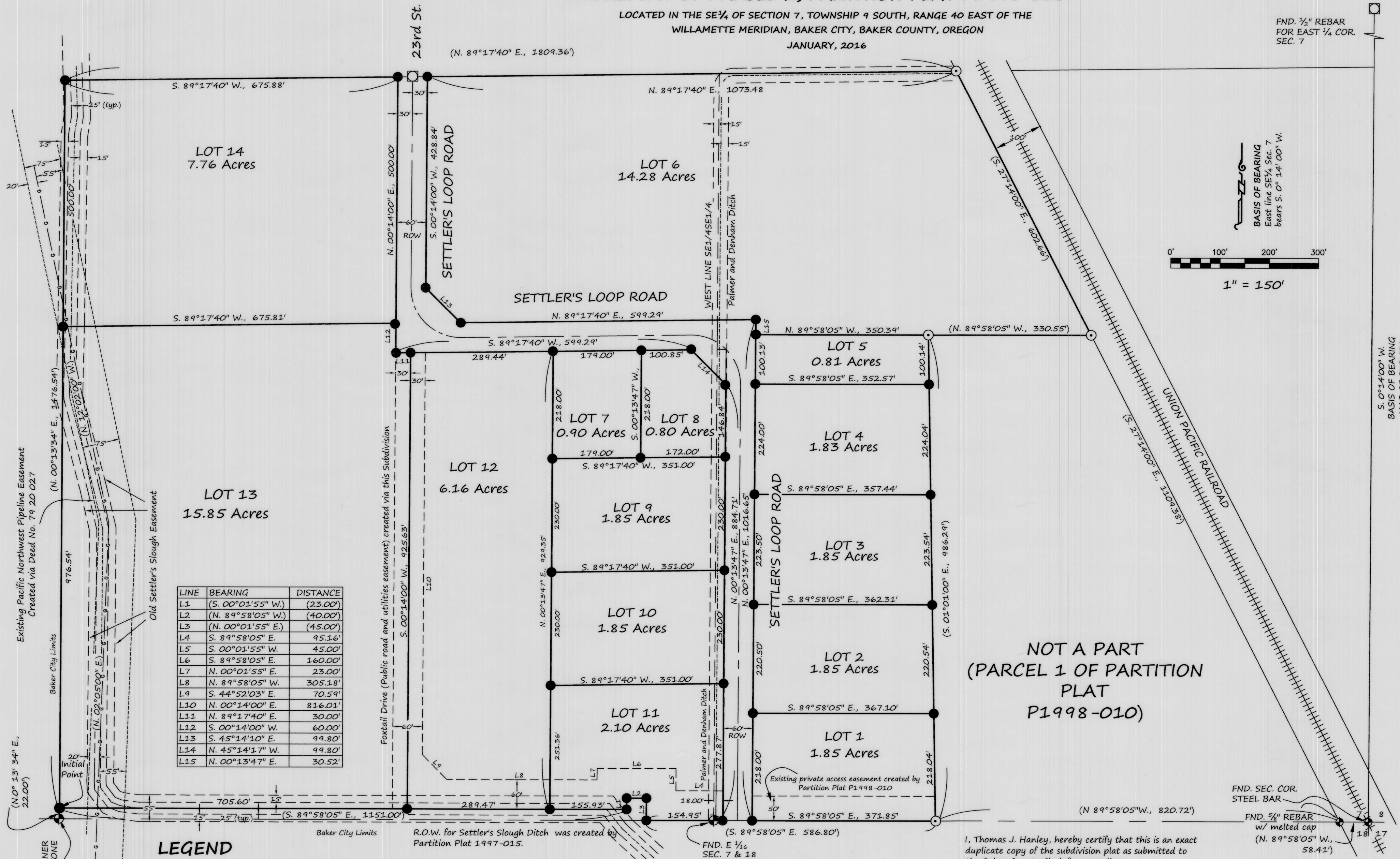


# ELKHORN VIEW INDUSTRIAL PARK SUBDIVISION SD2016-01

## A REPLAT OF PARCEL 2, PARTITION PLAT P1998-010

LOCATED IN THE SE 1/4 OF SECTION 7, TOWNSHIP 9 SOUTH, RANGE 40 EAST OF THE WILLAMETTE MERIDIAN, BAKER CITY, BAKER COUNTY, OREGON  
JANUARY, 2016

FND. 1/2" REBAR FOR EAST 1/4 COR. SEC. 7



LINE	BEARING	DISTANCE
L1	(S. 00°01'55" W.)	(23.00')
L2	(N. 89°58'05" W.)	(40.00')
L3	(N. 00°01'55" E.)	(45.00')
L4	S. 89°58'05" E.	95.16'
L5	S. 00°01'55" W.	45.00'
L6	S. 89°58'05" E.	160.00'
L7	N. 00°01'55" E.	23.00'
L8	N. 89°58'05" W.	305.18'
L9	S. 44°52'03" E.	70.59'
L10	N. 00°14'00" E.	816.01'
L11	N. 89°17'40" E.	30.00'
L12	S. 00°14'00" W.	60.00'
L13	S. 45°14'10" E.	99.80'
L14	N. 45°14'17" W.	99.80'
L15	N. 00°13'47" E.	30.52'

### LEGEND

- Set, 5/8" rebar with yellow plastic cap marked "HANLEY ENGR. PLS 1817"
- Found, 5/8" rebar with plastic cap marked "HANLEY ENGR. PLS 1206"
- ⊕ Found, monument as noted
- Found, monument in box
- ( ) Record data as per Partition Plat No. 1998-010
- Pacific Northwest Pipeline
- - - Gas Line easement
- - - Ditch centerline
- - - Ditch easement

SURVEY FOR:  
CITY OF BAKER CITY  
Baker City Hall  
1655 First Street  
P.O. Box 650  
Baker City, OR 97814  
(541) 523-6541

SURVEY BY:  
HANLEY ENGINEERING, INC.  
TOM HANLEY, PLS 1817  
P.O. BOX 701  
BAKER CITY, OR 97814  
(541)-523-3803

I, Thomas J. Hanley, hereby certify that this is an exact duplicate copy of the subdivision plat as submitted to the Baker County Clerk for recording.

*Thomas J. Hanley*  
Thomas J. Hanley

PLAT OF ELKHORN VIEW SUBDIVISION  
SHOWING EASEMENT LOCATIONS

REGISTERED  
PROFESSIONAL  
LAND SURVEYOR

*Thomas J. Hanley*  
OREGON  
JULY 13, 1979  
THOMAS J. HANLEY  
1817

Renews June 30, 2017

FILED Feb. 19, 2016  
BAKER COUNTY SURVEYOR  
OFFICE NO. 9-40-746

SHEET 3 OF 4