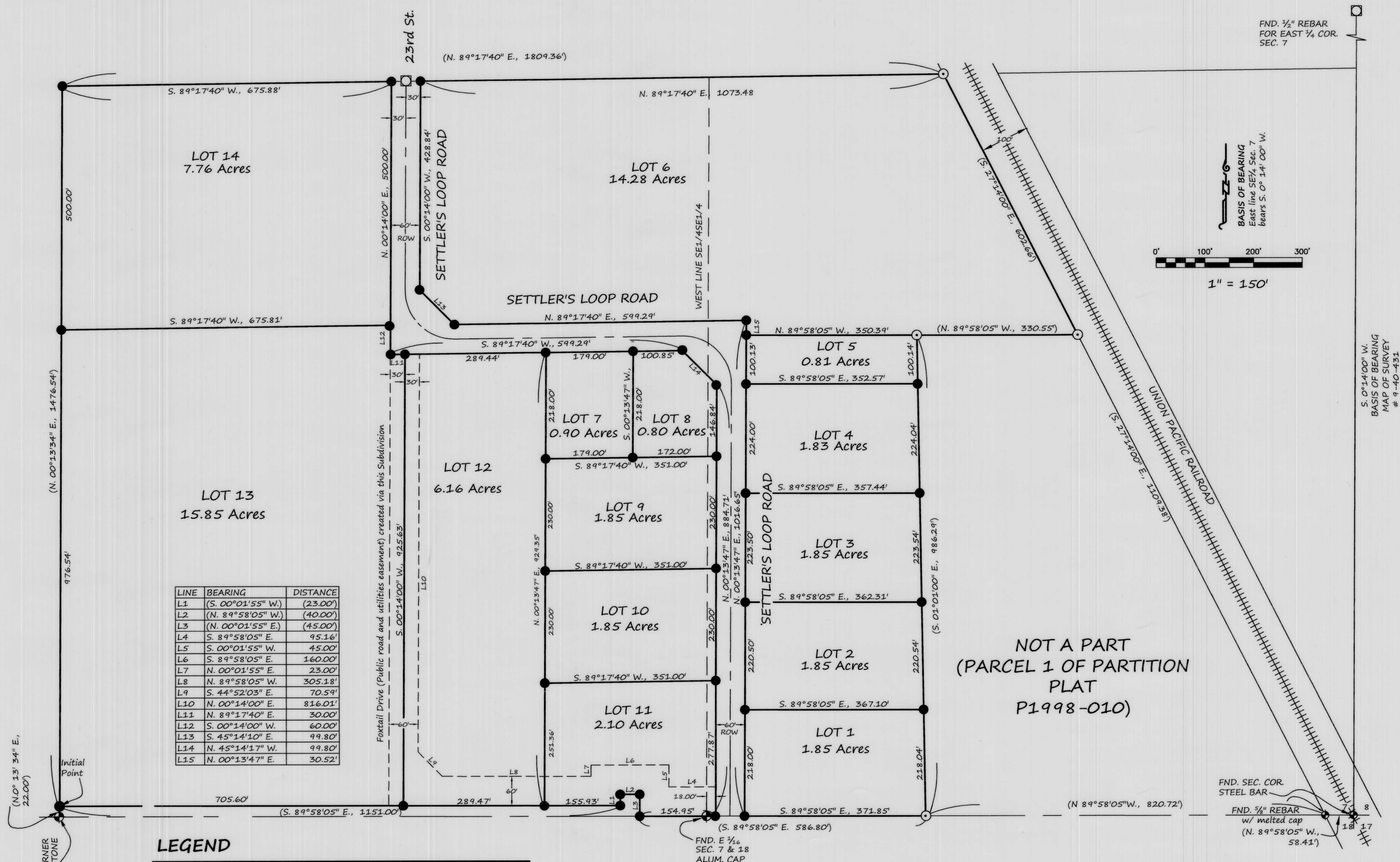


ELKHORN VIEW INDUSTRIAL PARK SUBDIVISION SD2016 - 01

A REPLAT OF PARCEL 2, PARTITION PLAT P1998-010

LOCATED IN THE SE 1/4 OF SECTION 7, TOWNSHIP 9 SOUTH, RANGE 40 EAST OF THE WILLAMETTE MERIDIAN, BAKER CITY, BAKER COUNTY, OREGON

JANUARY, 2016



LEGEND

- Set, 3/8" rebar with yellow plastic cap marked "HANLEY ENGR. PLS 1817"
- ⊙ Found, 3/8" rebar with plastic cap marked "HANLEY ENGR. PLS 1206"
- ⊕ Found, monument as noted
- ☐ Found, monument in box
- () Record data as per Partition Plat No. 1998-010

SURVEY FOR:
CITY OF BAKER CITY
Baker City Hall
1655 First Street
P.O. Box 650
Baker City, OR 97814
(541) 523-6541

SURVEY BY:
HANLEY ENGINEERING, INC.
TOM HANLEY, PLS 1817
P.O. BOX 701
BAKER CITY, OR 97814
(541)-523-3803

I, Thomas J. Hanley, hereby certify that this is an exact duplicate copy of the subdivision plat as submitted to the Baker County Clerk for recording.

Thomas J. Hanley
Thomas J. Hanley

REGISTERED
PROFESSIONAL
LAND SURVEYOR

Thomas J. Hanley
OREGON
JULY 13, 1979
THOMAS J. HANLEY
1817

Renews June 30, 2017

FILED Feb. 19, 2016
BAKER COUNTY SURVEYOR
SURVEY NO. 9-40-746

SHEET 2 OF 4