

NE 1/4 SEC. 20, NW 1/4 SEC. 21, T 9 S, R 40 E, W. M.

0+159.457 P.I.
N 126439.930
E 2711992.093

18
FND. 16mm (5/8") IRON ROD IN MONUMENT BOX, ACCEPT FOR INTERSECTION OF 1ST ST. AND ESTES ST., DESTROYED DURING CONSTRUCTION, REPLACED WITH 16mm x 762mm (5/8" x 30") IRON ROD W/ ODOT ALUM. CAP IN 102mm (4") PIPE CASING
N 126418.461
E 2711659.512

1002
FND. 13mm (1/2") IRON ROD IN MONUMENT BOX, CS 9-40-14 BC, ACCEPT FOR INTERSECTION OF 2ND ST. AND ESTES ST.
N 126417.968
E 2711569.093

20
FND. 16mm (5/8") IRON ROD IN MONUMENT BOX, CS 9-40-14 BC, ACCEPT AS INTERSECTION OF 2ND ST. AND CARTER ST.
N 126317.433
E 2711567.569

1004
FND. 25mm (1") IRON PIPE IN CITY MONUMENT BOX, ACCEPT AS INTERSECTION OF 3RD ST. AND GRACE ST., DRG. FOR LDS. JULY 23-34, 1940, P. ANDERSON SURVEY, MAR 1, 1949
N 126221.978
E 2711477.561

(80')
PLACE'S 2ND ADD'N

7.980m
VAC. ORD. 2170

9.580m
VAC. ORD. 22390

STODDARD'S ADDITION TO THE CITY OF BAKER

ESTES ST. N89°41'15"E 90.420m (*80')

SECOND ST. N0°52'06"E 100.546m (329.80') CS 9-40-14 BC

CARTER ST. N89°31'16"E 70.430m (*80')

DEWEY AVENUE N0°52'26"E 95.014m (*80')

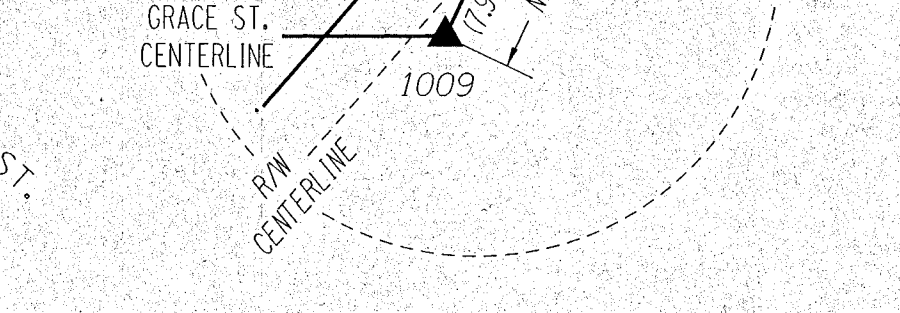
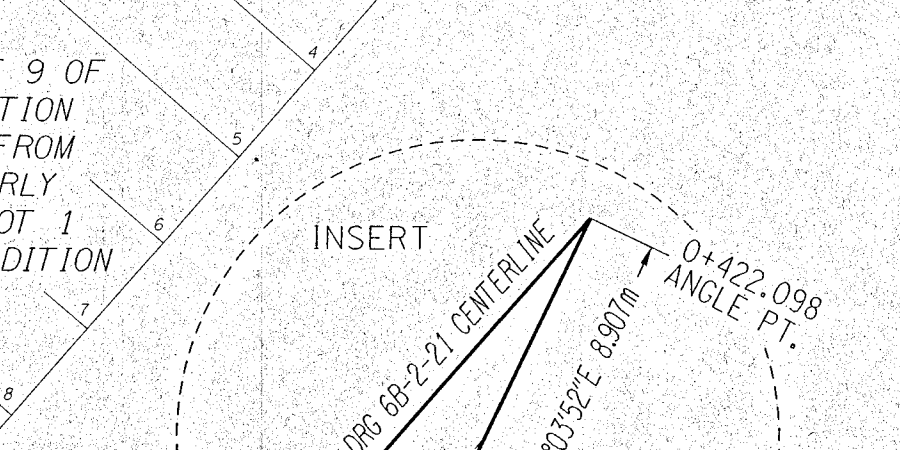
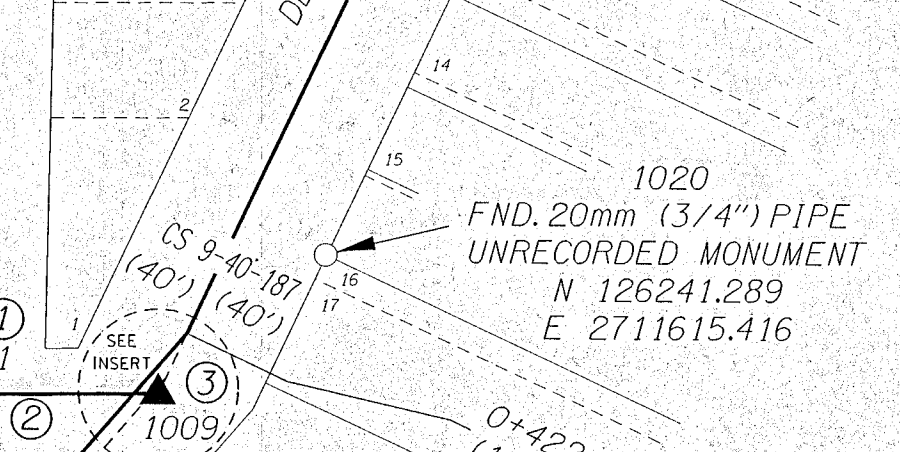
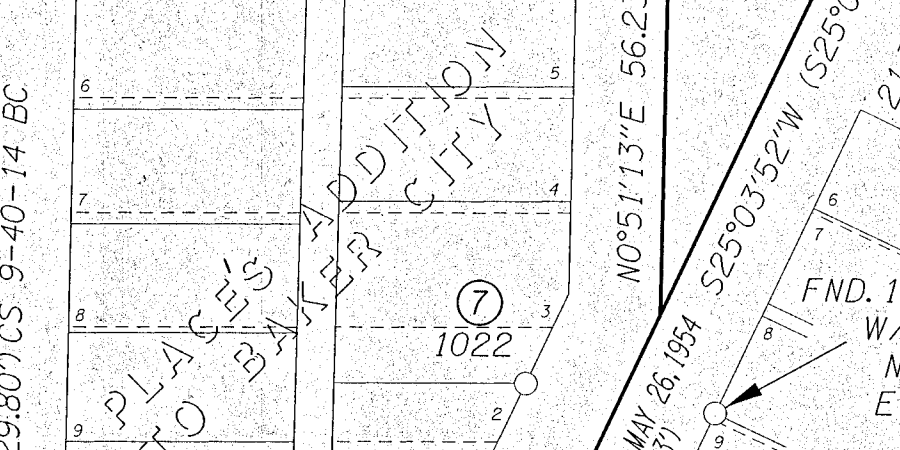
GRACE ST. N 89°42'27"E 88.560m (**290.60') [*290.61']

MYRTLE ST. N49°16'08"W

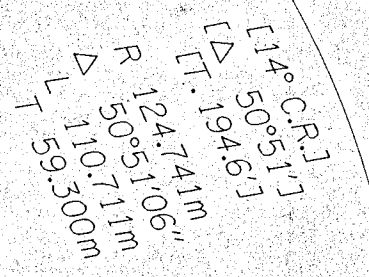
STODDARD'S ADDITION N40°43'52"E (S30°20'W)

RESORT ST. N0°51'13"E 56.232m

ELM ST. S0°33'43"W [S0°26'W] [S0°05'30"W] CS 9-40-341 MP



- LEGEND
- (*) M.E. PLACE'S ADDITION
 - () OSHD DRG. 6B-2-21 OR AS NOTED
 - [] OSHD DRG. 3B-22-23
 - [*] P. ANDERSON SURVEY, MAR. 1, 1949
 - (**) DRG. FOR LDS CHURCH, JULY 23-24, 1940
 - ▲ RESET MONUMENT
 - FOUND MONUMENT AS NOTED
 - RETRACED CENTERLINE
 - R/W OR PROPERTY BOUNDARY



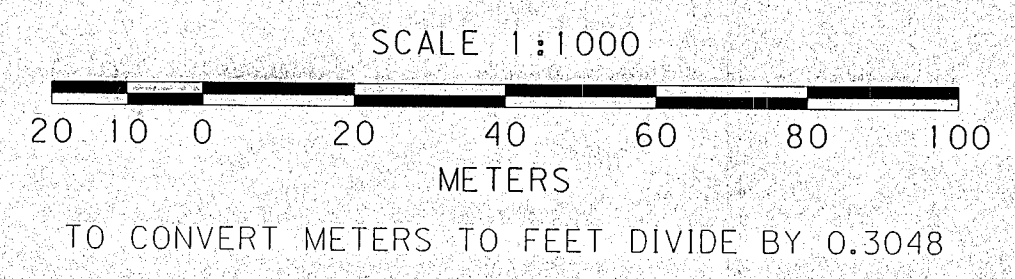
0+210.868 P.T.
[6+92.6 P.T.]

1003
FND. 23mm (1/2") IRON ROD IN MONUMENT BOX, CS 9-40-99 BC; CS 9-40-438, ACCEPT AS INTERSECTION OF ESTES ST. AND RESORT ST.
N 126334.915
E 2711817.817

1005
FND. BRASS CAP IN MON. BOX 0.9m (3 FT) DOWN FROM SURFACE FOR COR. COMMON TO SEC. 20, 21, 29, 28 CS 9-40-112 BC, 9-40-181
N 124996.532
E 2711749.806

- NOTES
- ① PT. 21: FND. IRON ROD IN MONUMENT BOX, ACCEPT AS INTERSECTION OF 2ND ST. AND GRACE ST. DESTROYED DURING CONSTRUCTION, REPLACED WITH 16mm x 762mm (5/8" x 30") IRON ROD W/ODOT ALUM. CAP IN 102mm (4") PIPE CASING
N 126222.430
E 2711566.120
 - ② PT. 21 TO PT. 1009:
N89°34'24"E 27.266m (**86.11')
 - ③ PT. 1009: FND. 16mm (5/8") IRON ROD IN CITY MONUMENT BOX, ACCEPT AS INTERSECTION OF GRACE ST. AND DEWEY ST., DESTROYED DURING CONSTRUCTION, REPLACED WITH 16mm x 762mm (5/8" x 30") IRON ROD W/ODOT ALUM. CAP IN 102mm (4") PIPE CASING
N 126222.633
E 2711593.385
 - ④ PT. 11: FND. 'PK' NAIL, CS 9-40-550
N 126202.318
E 2712000.884
 - ⑤ STODDARD'S ADDITION; PHILO ANDERSON SURVEY DATED MAR. 1, 1949
 - ⑥ PT. 12: FND. 12mm (1/2") IRON ROD IN MONUMENT BOX, ACCEPT AS POINT FOR CENTERLINE ELM STREET, CS 9-40-99 BC CS 9-40-341 MP
N 126425.681
E 2711991.953
 - ⑦ PT. 1022: FND. STEEL PIPE, UNRECORDED
N 126353.074
E 2711640.949

REGISTERED PROFESSIONAL LAND SURVEYOR
Robert E. Butler
OREGON JULY 23, 1995
ROBERT E. BUTLER 2735
EXPIRES DECEMBER 31, 2015



OREGON DEPARTMENT OF TRANSPORTATION
RIGHT-OF-WAY NETWORK MONUMENTATION MAP
OF THE DEWEY AVENUE (BAKER CITY) SECTION
OF THE WHITNEY AND LA GRANDE - BAKER CITY HIGHWAYS
MARCH 17, 2004 FOR ODOT REGION 5
3012 ISLAND AVENUE, LA GRANDE, OREGON, 97850
RETRACED CENTERLINE, RESET & FOUND MONUMENTS SHEET 3 OF 4

FILED August 10, 2015
BAKER COUNTY SURVEYOR
SURVEY NO. 9-40-738