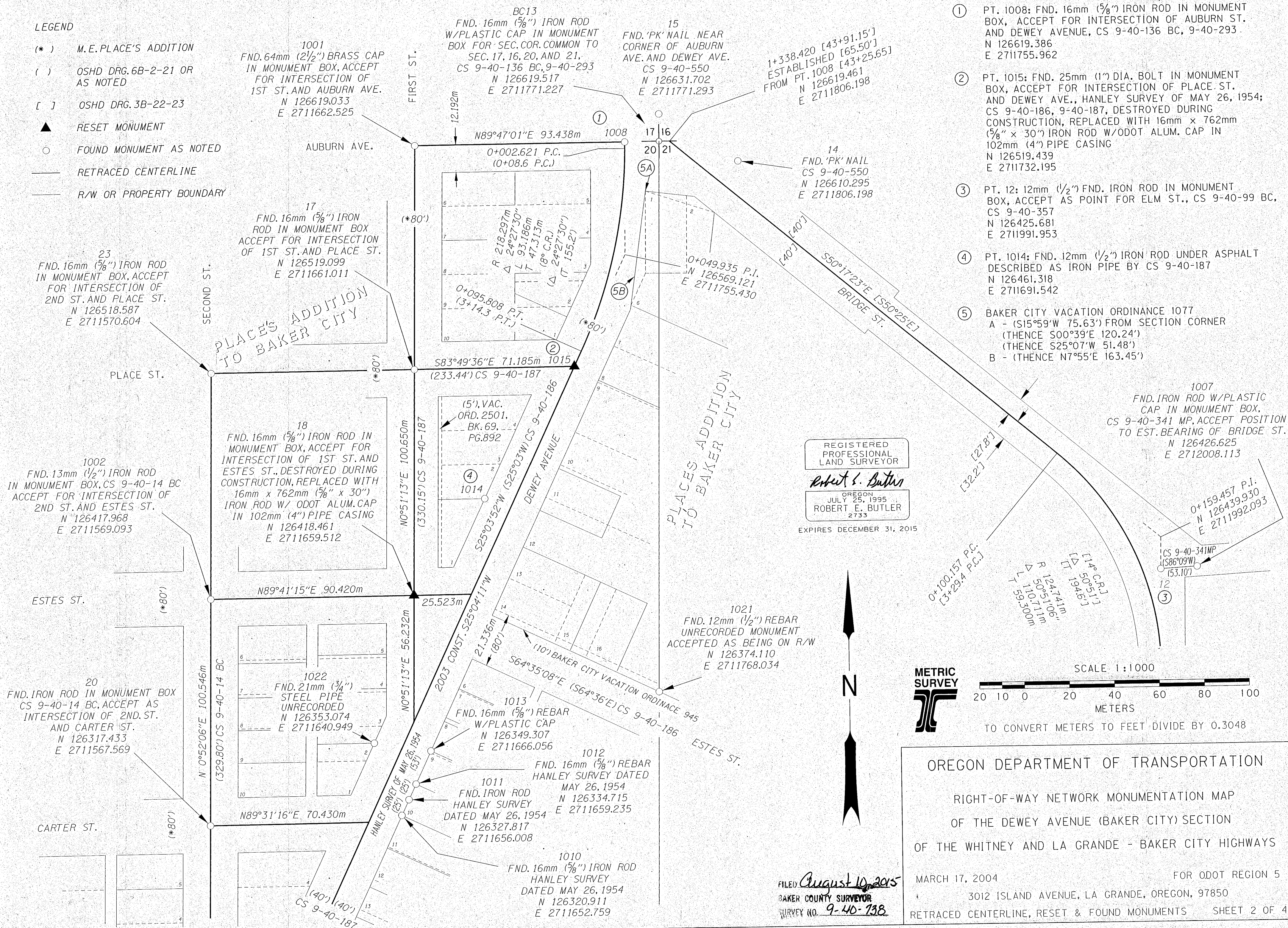


NE 1/4 SEC. 20, NW 1/4 SEC. 21, T 9 S, R 40 E, W. M.

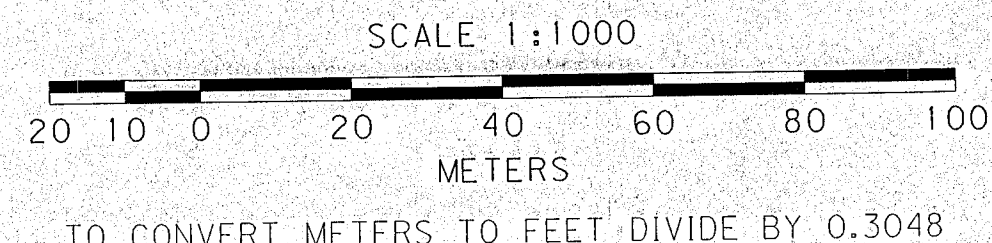
- LEGEND**
- (*) M.E. PLACE'S ADDITION
 - () OSHD DRG. 6B-2-21 OR AS NOTED
 - [] OSHD DRG. 3B-22-23
 - ▲ RESET MONUMENT
 - FOUND MONUMENT AS NOTED
 - RETRACED CENTERLINE
 - R/W OR PROPERTY BOUNDARY



NOTES

- ① PT. 1008: FND. 16mm (5/8") IRON ROD IN MONUMENT BOX, ACCEPT FOR INTERSECTION OF AUBURN ST. AND DEWEY AVENUE, CS 9-40-136 BC, 9-40-293. N 126619.386 E 2711755.962
- ② PT. 1015: FND. 25mm (1") DIA. BOLT IN MONUMENT BOX, ACCEPT FOR INTERSECTION OF PLACE ST. AND DEWEY AVE., HANLEY SURVEY OF MAY 26, 1954; CS 9-40-186, 9-40-187, DESTROYED DURING CONSTRUCTION, REPLACED WITH 16mm x 762mm (5/8" x 30") IRON ROD W/ODOT ALUM. CAP IN 102mm (4") PIPE CASING N 126519.439 E 2711732.195
- ③ PT. 12: 12mm (1/2") FND. IRON ROD IN MONUMENT BOX, ACCEPT AS POINT FOR ELM ST., CS 9-40-99 BC, CS 9-40-357 N 126425.681 E 2711991.953
- ④ PT. 1014: FND. 12mm (1/2") IRON ROD UNDER ASPHALT DESCRIBED AS IRON PIPE BY CS 9-40-187 N 126461.318 E 2711691.542
- ⑤ BAKER CITY VACATION ORDINANCE 1077
 A - (S15°59'W 75.63') FROM SECTION CORNER (THENCE S00°39'E 120.24')
 (THENCE S25°07'W 51.48')
 B - (THENCE N7°55'E 163.45')

REGISTERED PROFESSIONAL LAND SURVEYOR
Robert E. Butler
 OREGON JULY 26, 1995
 ROBERT E. BUTLER 2733
 EXPIRES DECEMBER 31, 2015



OREGON DEPARTMENT OF TRANSPORTATION
 RIGHT-OF-WAY NETWORK MONUMENTATION MAP
 OF THE DEWEY AVENUE (BAKER CITY) SECTION
 OF THE WHITNEY AND LA GRANDE - BAKER CITY HIGHWAYS
 MARCH 17, 2004 FOR ODOT REGION 5
 3012 ISLAND AVENUE, LA GRANDE, OREGON, 97850
 RETRACED CENTERLINE, RESET & FOUND MONUMENTS SHEET 2 OF 4

FILED August 10, 2015
 BAKER COUNTY SURVEYOR
 SURVEY NO. 9-40-138