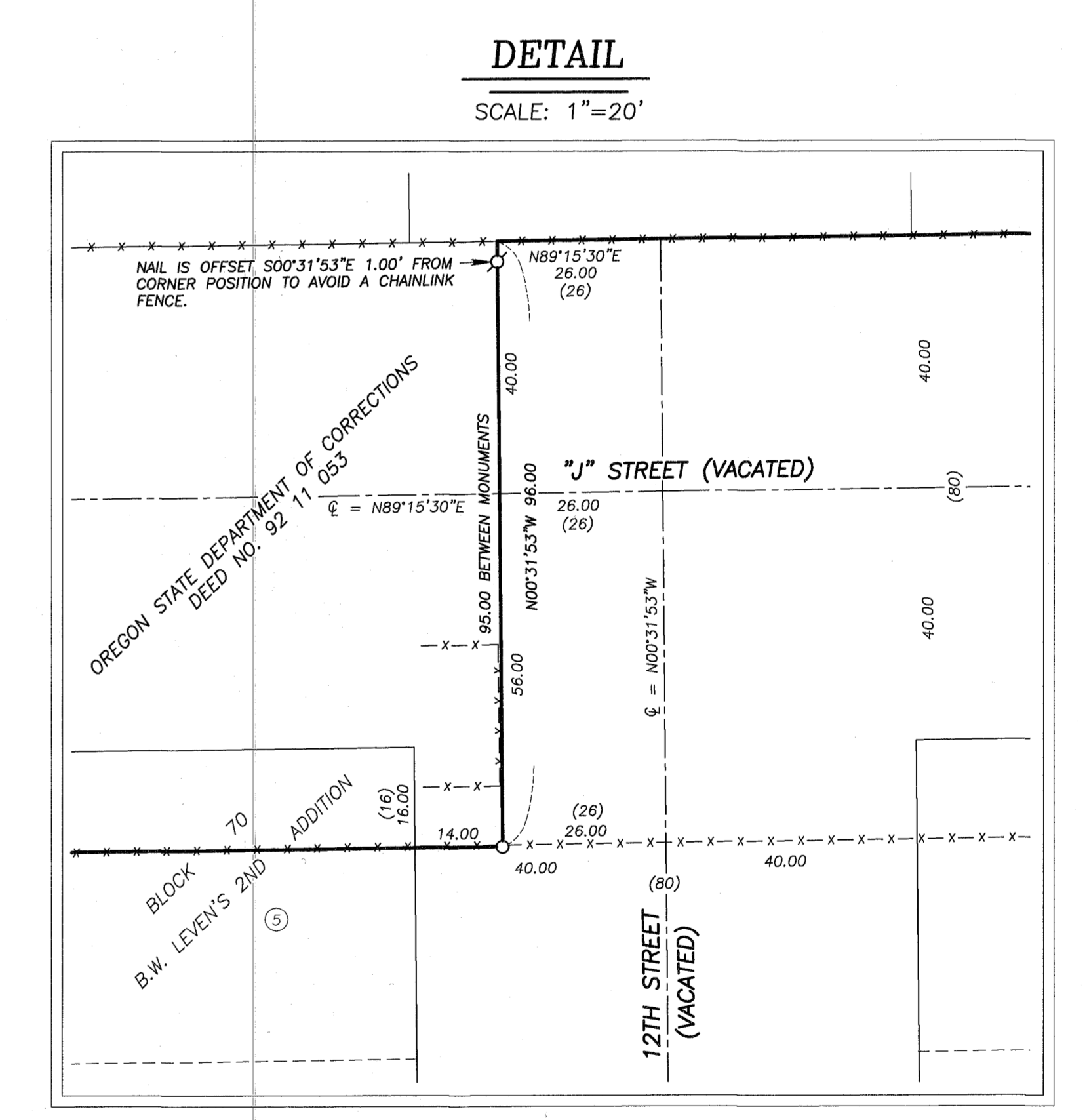


**BASIS OF BEARINGS**  
 RECORD SURVEY NO. 9-40-276  
 THE CENTERLINE OF 13TH STREET  
 BEARS N.00°31'34"W. AS SHOWN

- LEGEND**
- ◆ FOUND CENTERLINE MONUMENT: A 5/8" IRON PIN IN A STEEL MONUMENT CASE, UNLESS OTHERWISE NOTED
  - ◆ FOUND RAILROAD SPIKE UNDER ASPHALT SURFACE
  - FOUND 3/4" GALV. IRON PIPE AS ACCEPTED ON SURVEY NO. 9-40-262. THE PIPE HAD BEEN DISTURBED, WITH THE TOP 12" BENT NORTH. ALSO FOUND A PK NAIL SET AT THE SPIN POINT, WHICH WAS TIED AND ACCEPTED FOR THE CORNER POSITION.
  - FOUND 1/2" IRON PIPE, UNLESS OTHERWISE NOTED
  - SET 5/8"x30" IRON PIN WITH ATTACHED YELLOW PLASTIC CAP MARKED BENCHMARK SURVEYING
  - SET A 1/2" PK NAIL IN ASPHALT SURFACE
  - ( ) PLAT/DEED RECORD BEARING AND DISTANCE
  - [ ] RECORD BEARING AND DISTANCE FROM SURVEY NO. 9-40-262
  - 1[ ] RECORD BEARING AND DISTANCE FROM SURVEY NO. 9-40-276
  - SFNF MONUMENT SEARCHED FOR, NOT FOUND
  - x-x CHAIN LINK FENCE
  - ① LOT NUMBER



**REFERENCES**

RECORD MAP OF SURVEY NO.'S 9-40-63BC, 9-40-184, 9-40-262, 9-40-276 & 9-40-66OMP  
 DEED RECORD INSTRUMENT NO.'S: 88 21 066, 92 11 053, 813 47 0047  
 BAKER CITY ORDINANCE NO.'S 2431 & 3000  
 BAKER CITY SURVEY NO. AD 19 16  
 PLAT OF OTTENHEIMER'S ADDITION  
 PLAT OF B.W. LEVENS' SECOND ADDITION

**NARRATIVE**

THIS SURVEY WAS PERFORMED AT THE REQUEST OF DON THOMPSON WITH THE PURPOSE OF MARKING THE EXTERIOR BOUNDARY OF THAT CERTAIN PROPERTY DESCRIBED IN DEED NO. B13470047. THE SUBJECT PROPERTY IS SITUATED WITHIN BOTH OTTENHEIMER'S ADDITION AND B.W. LEVENS' SECOND ADDITION.

A SEARCH WAS MADE OF THE AVAILABLE RECORDS PERTAINING TO THIS SURVEY. THE PLAT OF B.W. LEVENS' SECOND ADDITION WAS PREPARED BY EMIL F. VOIGT, FILED APRIL 23, 1889. THE PLAT OF OTTENHEIMER'S ADDITION WAS ALSO PREPARED BY EMIL F. VOIGT, FILED MAY 3, 1889. CITY ORDINANCE NO. 2431 WAS PASSED BY THE CITY COUNCIL AUGUST 26, 1957. THIS ORDINANCE VACATED THE ALLEYS IN BLOCKS 64, 65, 70 AND 71 B.W. LEVENS' SECOND ADDITION AS WELL AS THE ALLEYS IN BLOCKS 1 AND 2 OF OTTENHEIMER'S ADDITION AND ALSO THOSE PORTIONS OF "I" STREET AND 12TH STREET WITHIN THE BOUNDARIES OF THE SUBJECT PROPERTY. CITY ORDINANCE NO. 3000 WAS PASSED JUNE 12, 1990, AND VACATED "J" STREET BETWEEN 11TH STREET AND 13TH STREET.

FIELD MEASUREMENTS WERE MADE TO LOCATE MONUMENTS SHOWN ON RECORD SURVEY NO.'S 9-40-63BC, 9-40-184, 9-40-262 AND 9-40-276. SURVEY NO. 9-40-184 SHOWS A PK NAIL FOUND AT THE CENTERLINE INTERSECTION OF "H" STREET AND 13TH STREET. WE DID NOT FIND THE NAIL, BUT DID FIND A RAILROAD SPIKE ABOUT 10" BELOW THE ASPHALT SURFACE. ALTHOUGH I COULD FIND NO RECORD OF THIS MONUMENT BEING SET OR SUBSEQUENTLY RECOVERED, ITS POSITION FITS REASONABLY WELL WITH OTHER FOUND CENTERLINE MONUMENTS, AND IS ACCEPTED FOR THIS SURVEY.

WE SEARCHED FOR BUT DID NOT FIND THE MONUMENTS SHOWN ON SURVEY NO.'S 9-40-63BC AND 9-40-262 AT THE SOUTHWEST CORNER OF BLOCK 3 OTTENHEIMER'S ADDITION AND AT THE SOUTHEAST CORNER OF BLOCK 66 B.W. LEVENS' SECOND ADDITION. I SUSPECT BOTH OF THESE MONUMENTS WERE DESTROYED DURING CONSTRUCTION ACTIVITIES FOR THE DEVELOPMENT OF THE STATE CORRECTIONAL FACILITY. WE ALSO SEARCHED FOR MONUMENTS AT THE CENTERLINE INTERSECTIONS OF "I" STREET AND 11TH STREET AND AT "J" STREET AND 13TH STREET AS SHOWN ON SURVEY NO. 9-40-63BC BUT FOUND NOTHING.

NEW MONUMENTS WERE SET AT POSITIONS ACCORDING TO THE EVIDENCE FOUND, AND THE PLAT AND DEED RECORD DIMENSIONS, AS SHOWN.

REGISTERED PROFESSIONAL LAND SURVEYOR  
*Jason L. Hatfield*  
 OREGON  
 NOVEMBER 30, 2007  
 JASON L. HATFIELD  
 #69454  
 EXPIRES: 6/30/2015

**BENCHMARK LAND SURVEYING**  
 217 N. CANYON BLVD., JOHN DAY, OREGON  
 2101 MAIN STREET, STE 223 BAKER CITY, OREGON  
 541-575-1251 ~ 800-699-0516

**MAP OF SURVEY**  
 BLOCKS 1 & 2 OTTENHEIMER'S ADDITION & BLOCKS 64, 65, 70 & 71 B.W. LEVENS' 2ND ADDITION SITUATED IN THE S1/2SW1/4 SECTION 6, T.9S., R.40E., BAKER CITY, BAKER COUNTY, OREGON

SURVEYED FOR	DON AND DAN THOMPSON
SURVEYED BY	JLH & MCS
SCALE:	1"=60'
DRAWN BY:	JLH
	12/11/2014

FILED December 20, 2014  
 BAKER COUNTY SURVEYOR  
 SURVEY NO. 9-40-128