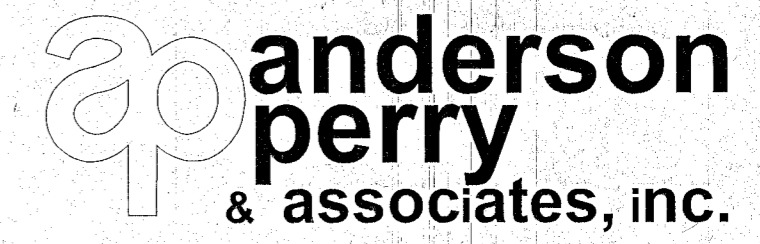


ANDERSON-PERRY & ASSOCIATES
 1901 N. FIR ST., LA GRANDE, OR., 97850
 MAP OF SURVEY
 RIGHT-OF-WAY & HORIZONTAL CONTROL
 BEST FRONTAGE ROAD (COUNTY RD 542)
 SECTIONS 9, 10, 15 & 16; T9S R40E W.M.
 BAKER COUNTY

S.E. 1/4 SEC. 10, S.W. 1/4 SEC 9,
 N.E. 1#4 SEC. 15 AND N.W. 1#4 SEC 16
 T.9S, R. 40E, W.M.



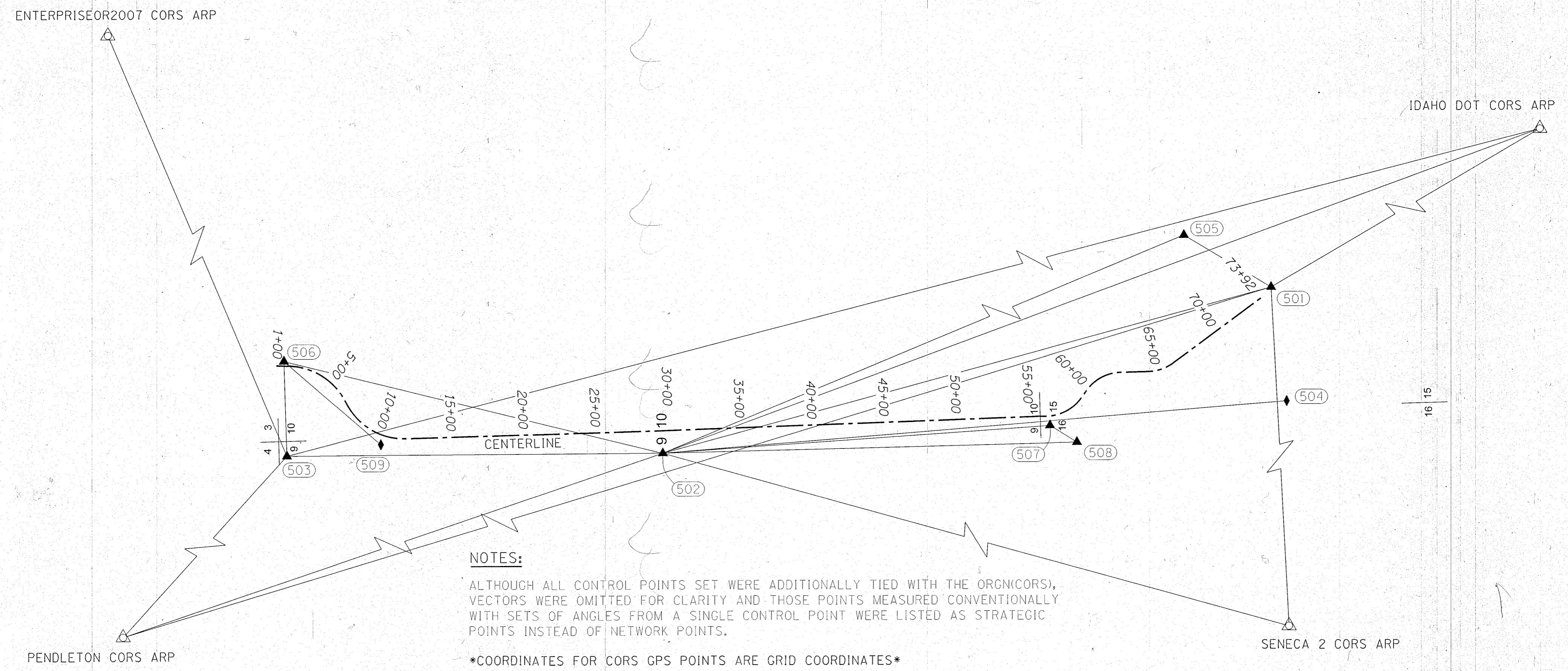
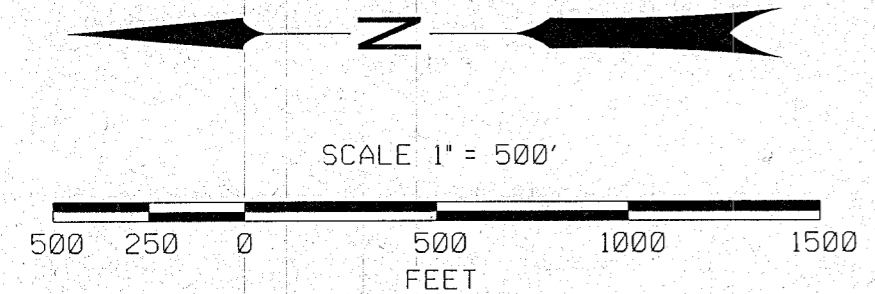
FOR BAKER COUNTY & ODOT REGION 5 NOVEMBER 2014
 3050 E STREET SCALE: 1" = 500'
 BAKER CITY, OR. 97814 APA JOB #90-51 SHEET 6 OF 6

CORS GPS LIST (OR NORTH ZONE 3601)			
PT. DESIGNATION	PID	GRID NORTHING	GRID EASTING
PENDLETON CORS ARP	DN5846	733698.82	8647689.85
IDAHO DOT CORS ARP	AJ3346	24118.05	9317882.26
ENTERPRISEOR2007 CORS ARP	DL7743	658946.75	9035812.02
SENECA 2 CORS ARP	DG9793	184744.20	8580389.95

REGISTERED
 PROFESSIONAL
 LAND SURVEYOR
Jeffrey A. Madsen
 OREGON
 JUNE 13, 2008
 JEFFREY A. MADSEN
 60000LS
 EXPIRES: 12/31/16
 SIGNED: 11/21/14

LEGEND	
	CORS GPS CONTROL STATION
	SET NETWORK POINT
	SET STRATEGIC POINT
	BASELINE OBSERVATION
	CENTERLINE

SET MONUMENT LIST						
PT. NO.	LDP NORTHING	LDP EASTING	STATION & ALIGNMENT	OFFSET	DATE	DESCRIPTION
501	419152.19	8901329.98	N/A	N/A	8/2/13	SET 1/2" IRON ROD (REBAR) WITH RED PLASTIC CAP INSCRIBED "APA CONTROL"
502	423367.40	8900197.91	29+65.01	154.46 RT	8/2/13	SET 1*2" IRON ROD (REBAR) WITH RED PLASTIC CAP INSCRIBED "APA CONTROL"
503	425970.92	8900184.13	N/A	N/A	8/2/13	SET 1*2" IRON ROD (REBAR) WITH RED PLASTIC CAP INSCRIBED "APA CONTROL"
504	419045.30	8900546.94	N/A	N/A	8/6/13	SET NAIL SPIKE
505	419756.55	8901691.61	N/A	N/A	8/6/13	SET HUB + MAGNAIL
506	425991.47	8900835.31	1+51.60	31.80 LT	8/6/13	SET HUB + MAGNAIL
507	420685.54	8900383.48	56+49.59	63.67 RT	8/22/13	SET MAGNAIL
508	420499.35	8900267.31	N/A	N/A	8/22/13	SET MAGNAIL
509	425320.23	8900261.01	10+35.32	66.21 RT	8/29/13	SET HUB + TACK



NOTES:
 ALTHOUGH ALL CONTROL POINTS SET WERE ADDITIONALLY TIED WITH THE ORGN(CORS), VECTORS WERE OMITTED FOR CLARITY AND THOSE POINTS MEASURED CONVENTIONALLY WITH SETS OF ANGLES FROM A SINGLE CONTROL POINT WERE LISTED AS STRATEGIC POINTS INSTEAD OF NETWORK POINTS.
 COORDINATES FOR CORS GPS POINTS ARE GRID COORDINATES

filed November 24, 2014
 BAKER COUNTY SURVEYOR
 SURVEY NO. 9-40-727