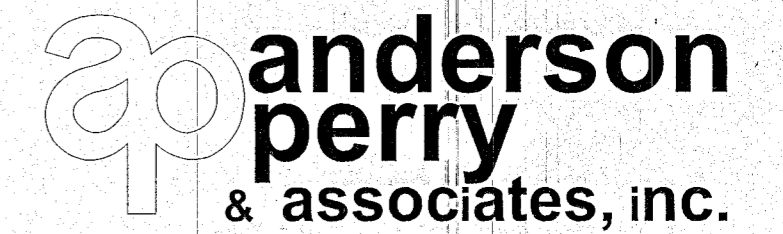


ANDERSON-PERRY & ASSOCIATES  
1901 N. FIR ST., LA GRANDE, OR., 97850

MAP OF SURVEY  
RIGHT-OF-WAY & HORIZONTAL CONTROL  
BEST FRONTAGE ROAD (COUNTY RD 542)  
SECTIONS 9, 10, 15 & 16; T9S R40E W.M.  
BAKER COUNTY

FOR BAKER COUNTY & ODOT REGION 5 NOVEMBER 2014  
3050 E STREET SCALE: 1"=100'  
BAKER CITY, OR. 97814 APA JOB #90-51 SHEET 5 OF 6

S.E. 1/4 SEC. 10, S.W. 1/4 SEC 9,  
N.E. 1#4 SEC. 15 AND N.W. 1#4 SEC 16  
T.9S, R. 40E, W.M.



SET MONUMENT LIST

PT. NO.	LDP NORTHING	LDP EASTING	STATION & ALIGNMENT	OFFSET	DATE	DESCRIPTION
6020	420195.13	8900705.28	62+50.11	40.00 RT	10/14/14	SET 5/8" X 30" REBAR WITH 1 1/2" ALUMINUM CAP MARKED "APA 60000LS"
6021	420197.11	8900785.26	62+50.11	40.00 LT	10/14/14	SET 5/8" X 30" REBAR WITH 1 1/2" ALUMINUM CAP MARKED "APA 60000LS"
6022	420002.89	8900790.06	64+44.39	40.00 LT	10/14/14	SET 5/8" X 30" REBAR WITH 1 1/2" ALUMINUM CAP MARKED "APA 60000LS"
6023	420000.91	8900710.09	64+44.39	40.00 RT	10/14/14	SET 5/8" X 30" REBAR WITH 1 1/2" ALUMINUM CAP MARKED "APA 60000LS"
6024	419808.46	8900775.66	66+26.57	40.00 RT	10/14/14	SET 5/8" X 30" REBAR WITH 1 1/2" ALUMINUM CAP MARKED "APA 60000LS"
6025	419855.72	8900840.20	66+26.57	40.00 LT	10/14/14	SET 5/8" X 30" REBAR WITH 1 1/2" ALUMINUM CAP MARKED "APA 60000LS"
6026	419309.56	8901240.09	73+03.47	40.00 LT	10/14/14	SET 5/8" X 30" REBAR WITH 1 1/2" ALUMINUM CAP MARKED "APA 60000LS"
6027	419407.46	8901068.40	71+23.05	40.70 RT	10/14/14	SET 5/8" X 30" REBAR WITH 1 1/2" ALUMINUM CAP MARKED "APA 60000LS"
6028	419245.95	8901170.68	73+13.80	53.58 RT	10/14/14	SET 5/8" X 30" REBAR WITH 1 1/2" ALUMINUM CAP MARKED "APA 60000LS"

SET CONTROL LIST

PT. NO.	LDP NORTHING	LDP EASTING	STATION & ALIGNMENT	OFFSET	DATE	DESCRIPTION
501	419152.19	8901329.98	N/A	N/A	8/2/2013	SET 1/2" IRON ROD (REBAR) WITH RED PLASTIC CAP INSCRIBED "APA CONTROL"

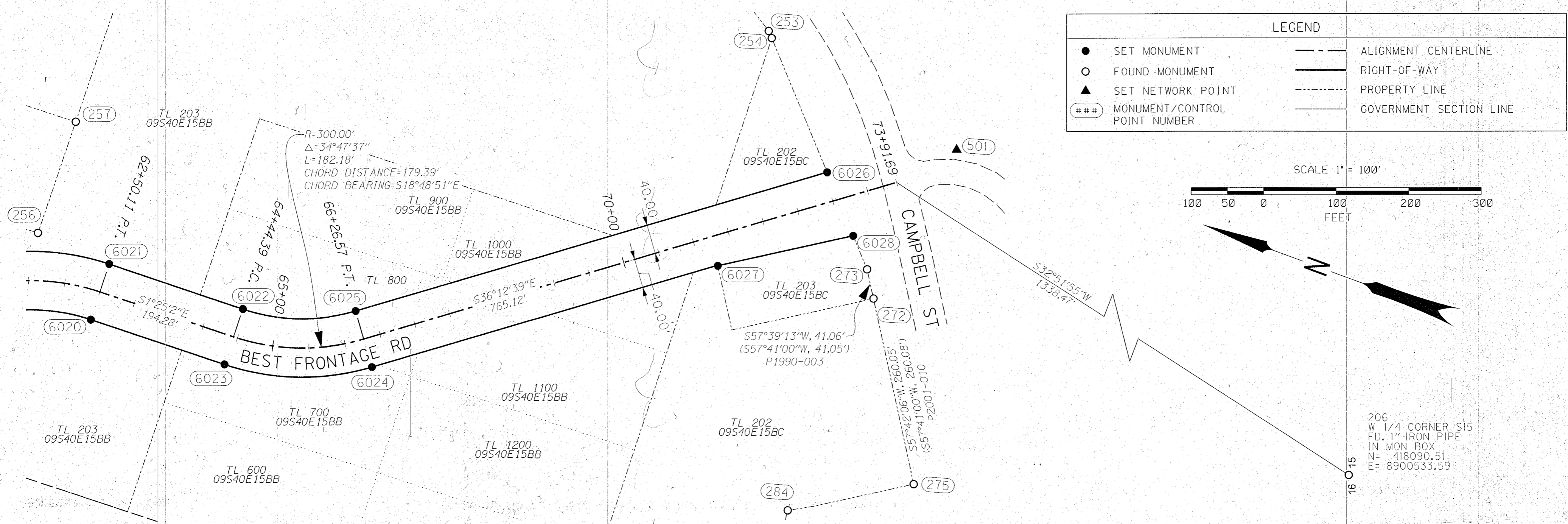
RECOVERED MONUMENT LIST

PT. NO.	LDP NORTHING	LDP EASTING	STATION & ALIGNMENT	OFFSET	DATE	DESCRIPTION & REFERENCE DOCUMENTS
206	418090.51	8900533.59	N/A	N/A	8/2/2013	FND 1" IP IN MONUMENT BOX (CS 9-40-25BC)
253	419451.79	8901394.98	N/A	N/A	8/6/2013	FND 5/8" IR W/1 1/2" ALCAP "OSHD" (SHOWN ON P2001-010, RECORD UNKNOWN)
254	419444.40	8901387.14	N/A	N/A	8/6/2013	FND 5/8" IR W/YPC "BGA SURVEY MARKER" (P1990-003)
256	420304.23	8900791.92	61+18.07	65.30 LT	8/6/2013	FND 5/8" IR W/NO CAP (P1999-015)
257	420307.34	8900952.52	N/A	N/A	8/6/2013	FND 5/8" IR W/NO CAP, BENT, SHOT AT SPINHOLE (P1999-015)
272	419190.34	8901099.37	72+73.60	143.97 RT	8/15/2013	FND 1/2" IR W/NO CAP, BENT, SHOT AT SPINHOLE (CS 9-40-39BC)
273	419212.31	8901134.06	72+76.37	103.01 RT	8/15/2013	FND 5/8" IR W/1 1/2" ALCAP - ILLEGIBLE (OSHD DRAWING NO. 1A-+21-12)
275	419051.39	8900879.55	N/A	N/A	8/15/2013	FND 5/8" IR W/NO CAP, BENT (P1990-003)
284	419202.33	8900786.57	N/A	N/A	9/12/2013	FND 5/8" IR W/YPC "BGA SURVEY MARKER" (P1990-003)

REGISTERED PROFESSIONAL LAND SURVEYOR

JEFFREY A. MADSEN  
OREGON  
JUNE 13, 2008  
JEFFREY A. MADSEN  
60000LS

EXPIRES: 12/31/16  
SIGNED: 11/21/14



206  
W 1/4 CORNER S15  
FD. 1" IRON PIPE  
IN MON BOX  
N= 418090.51  
E= 8900533.59

FILED November 24, 2014  
BAKER COUNTY SURVEYOR  
SURVEY NO. 9-40-727