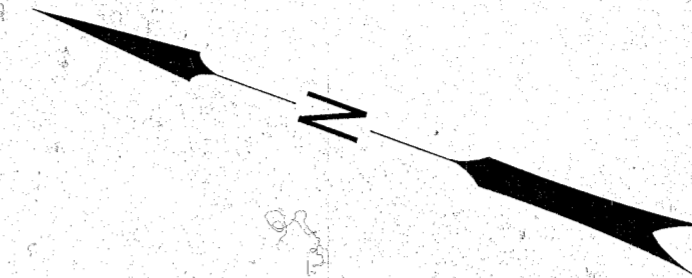
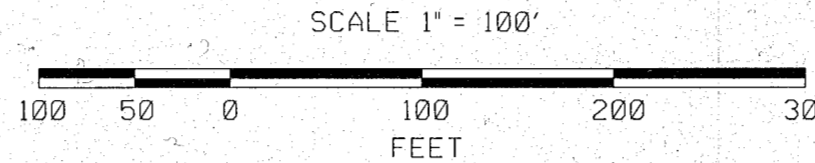
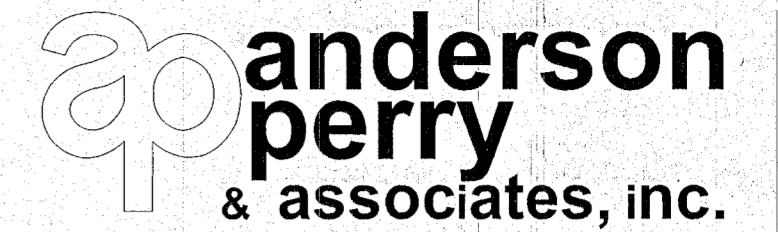


ANDERSON-PERRY & ASSOCIATES
 1901 N. FIR ST., LA GRANDE, OR., 97850
 MAP OF SURVEY
 RIGHT-OF-WAY & HORIZONTAL CONTROL
 BEST FRONTAGE ROAD (COUNTY RD 542)
 SECTIONS 9, 10, 15 & 16; T9S R40E W.M.
 BAKER COUNTY

FOR BAKER COUNTY & ODOT REGION 5 NOVEMBER 2014
 3050 E STREET SCALE: 1"=100'
 BAKER CITY, OR. 97814 APA JOB #90-51 SHEET 4 OF 6

S.E. 1/4 SEC. 10, S.W. 1/4 SEC 9,
 N.E. 1#4 SEC. 15 AND N.W. 1#4 SEC 16
 T.9S, R. 40E, W.M.



NOTES:

201 - THE SW CORNER OF SECTION 10 WAS RESET WITH A 2 1/2" BRASS CAP ON A COPPER-CLAD IRON ROD IN A MONUMENT BOX AT IT'S FORMER POSITION PRIOR TO CONSTRUCTION AND STAMPED AS SHOWN BELOW (LEFT). MONUMENTATION RECORD FILED SEPARATELY.

75184 - SET A 1 1/2" ALUMINUM CAP ON A 5/8" REBAR AT STATION 56+51.00, 40.00 LT. AS A WITNESS CORNER FROM WHICH THE TRUE CORNER BEARS N4°09'52"W, A DISTANCE OF 2.42', MARKED AS SHOWN BELOW (RIGHT).

NEITHER 75184 OR 6015 REPRESENT THE POINT-OF-CURVATURE(PC) OF THE RIGHT-OF-WAY

SET MONUMENT LIST

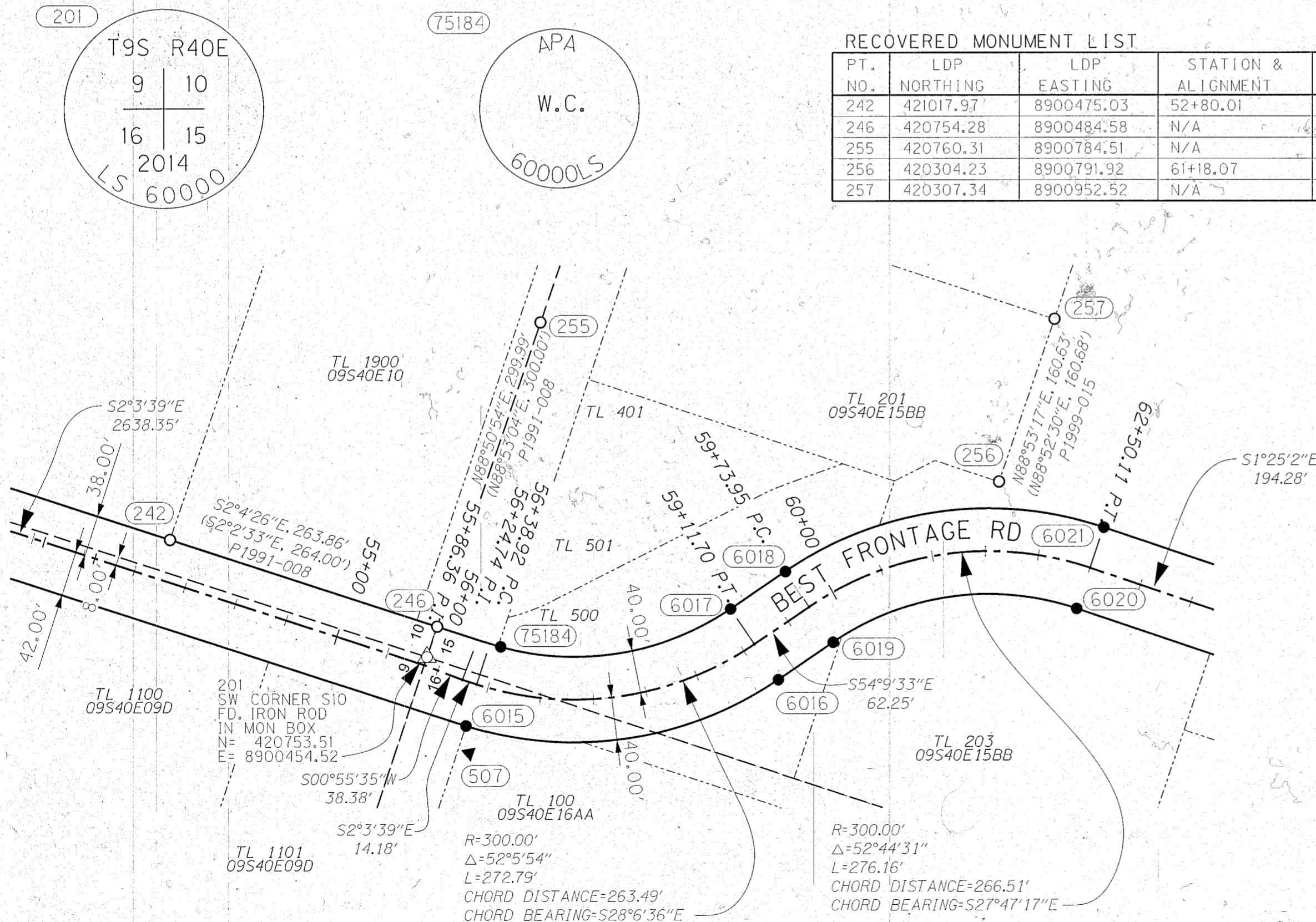
PT. NO.	LDP NORTHING	LDP EASTING	STATION & ALIGNMENT	OFFSET	DATE	DESCRIPTION
75184	420691.73	8900486.98	56+51.00	40.00 LT	11/03/14	SET 5/8" X 30" REBAR WITH 1 1/2" ALUMINUM CAP MARKED "APA WC 60000LS"
6015	420697.15	8900406.53	??	??	10/13/14	SET 5/8" X 30" REBAR WITH 1 1/2" ALUMINUM CAP MARKED "APA 60000LS"
6016	420435.92	8900547.14	??	??	10/13/14	SET 5/8" X 30" REBAR WITH 1 1/2" ALUMINUM CAP MARKED "APA 60000LS"
6017	420500.77	8900593.98	??	??	10/13/14	SET 5/8" X 30" REBAR WITH 1 1/2" ALUMINUM CAP MARKED "APA 60000LS"
6018	420464.32	8900644.45	??	??	10/13/14	SET 5/8" X 30" REBAR WITH 1 1/2" ALUMINUM CAP MARKED "APA 60000LS"
6019	420399.47	8900597.60	??	??	10/13/14	SET 5/8" X 30" REBAR WITH 1 1/2" ALUMINUM CAP MARKED "APA 60000LS"
6020	420195.13	8900705.28	??	??	10/14/14	SET 5/8" X 30" REBAR WITH 1 1/2" ALUMINUM CAP MARKED "APA 60000LS"
6021	420197.11	8900785.26	??	??	10/14/14	SET 5/8" X 30" REBAR WITH 1 1/2" ALUMINUM CAP MARKED "APA 60000LS"

SET CONTROL LIST

PT. NO.	LDP NORTHING	LDP EASTING	STATION & ALIGNMENT	OFFSET	DATE	DESCRIPTION
507	420685.54	8900383.48	56+49.59	63.67 RT	8/22/2013	SET MAGNAIL

RECOVERED MONUMENT LIST

PT. NO.	LDP NORTHING	LDP EASTING	STATION & ALIGNMENT	OFFSET	DATE	DESCRIPTION & REFERENCE DOCUMENTS
242	421017.97	8900475.03	52+80.01	40.00 LT	8/2/2013	FND 5/8" IR W/YPC "HANLEY ENGR. PLS 1206" (CS 9-40-234)
246	420754.28	8900484.58	N/A	N/A	8/2/2013	FND 5/8" IR W/YPC "HANLEY ENGR. PLS 1206" BENT, SHOT AT SPINHOLE (CS 9-40-234)
255	420760.31	8900784.51	N/A	N/A	8/6/2013	FND 5/8" IR W/NO CAP (CS 9-40-234)
256	420304.23	8900791.92	61+18.07	65.30 LT	8/6/2013	FND 5/8" IR W/NO CAP (P1999-015)
257	420307.34	8900952.52	N/A	N/A	8/6/2013	FND 5/8" IR W/NO CAP, BENT, SHOT AT SPINHOLE (P1999-015)



REGISTERED
 PROFESSIONAL
 LAND SURVEYOR
Jeffrey A. Madsen
 OREGON
 JUNE 13, 2008
 JEFFREY A. MADSEN
 60000LS
 EXPIRES: 12/31/16
 SIGNED: 11/21/14

LEGEND

●	SET MONUMENT	---	ALIGNMENT CENTERLINE
○	FOUND MONUMENT	---	RIGHT-OF-WAY
▲	SET NETWORK POINT	---	PROPERTY LINE
###	MONUMENT/CONTROL POINT NUMBER	---	GOVERNMENT SECTION LINE

FILED November 24, 2014
 BAKER COUNTY SURVEYOR
 SURVEY NO. 9-40-727