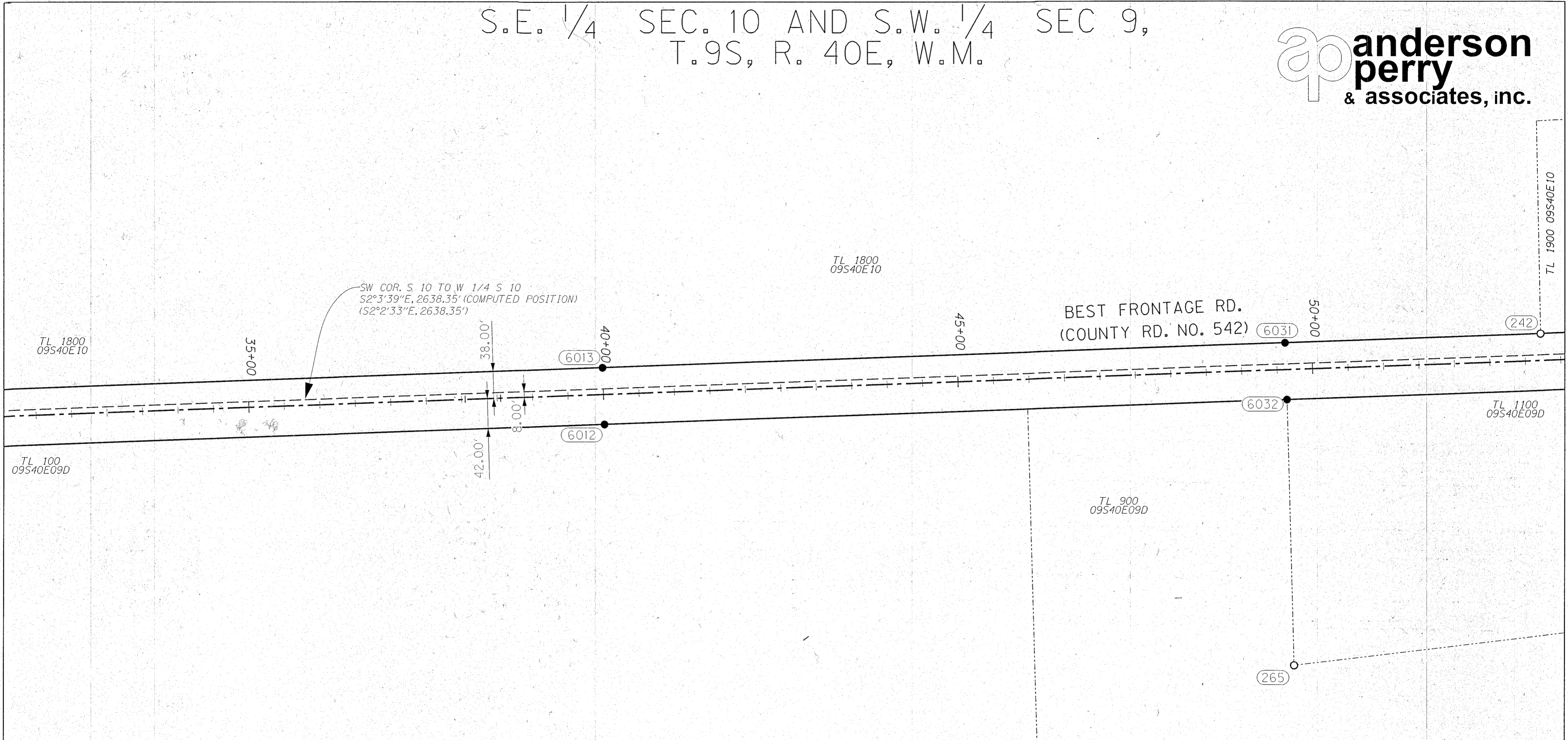
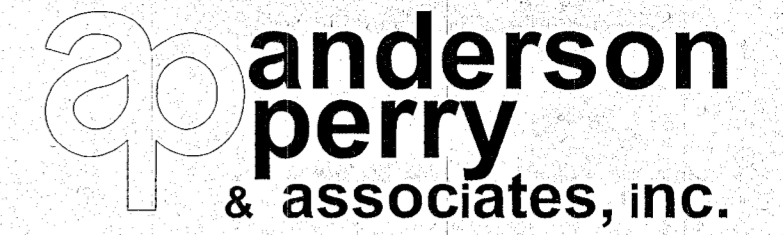


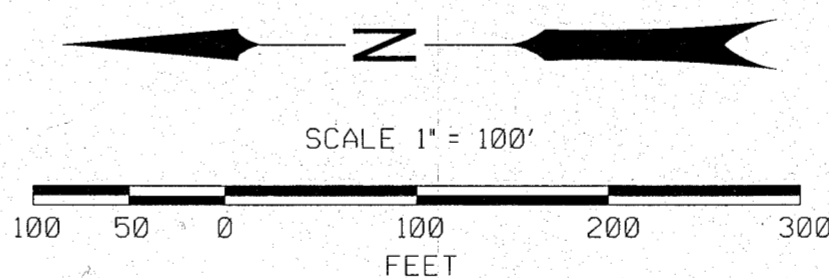
S.E. 1/4 SEC. 10 AND S.W. 1/4 SEC 9,
T.9S, R. 40E, W.M.



REGISTERED
PROFESSIONAL
LAND SURVEYOR

Jeffrey A. Madsen
OREGON
JUNE 13, 2008
JEFFREY A. MADSEN
60000LS

EXPIRES: 12/31/16
SIGNED: 11/21/14



LEGEND	
●	SET MONUMENT
○	FOUND MONUMENT
▲	SET NETWORK POINT
###	MONUMENT/CONTROL POINT NUMBER
---	ALIGNMENT CENTERLINE
—	RIGHT-OF-WAY
----	PROPERTY LINE
—	GOVERNMENT SECTION LINE

SET MONUMENT LIST

PT. NO.	LDP NORTHING	LDP EASTING	STATION & ALIGNMENT	OFFSET	DATE	DESCRIPTION
6012	422337.12	8900347.51	40+00.00	42.00 RT	10/13/14	SET 5/8" X 30" REBAR WITH 1 1/2" ALUMINUM CAP MARKED "APA 60000LS"
6013	422339.99	8900427.46	40+00.00	38.00 LT	10/13/14	SET 5/8" X 30" REBAR WITH 1 1/2" ALUMINUM CAP MARKED "APA 60000LS"
6031	421378.07	8900462.07	49+62.54	38.00 LT	10/13/14	SET 5/8" X 30" REBAR WITH 1 1/2" ALUMINUM CAP MARKED "APA 60000LS"
6032	421375.19	8900382.12	49+62.54	42.00 RT	10/13/14	SET 5/8" X 30" REBAR WITH 1 1/2" ALUMINUM CAP MARKED "APA 60000LS"

RECOVERED MONUMENT LIST

PT. NO.	LDP NORTHING	LDP EASTING	STATION & ALIGNMENT	OFFSET	DATE	DESCRIPTION & REFERENCE DOCUMENTS
265	421364.66	8900006.72	N/A	N/A	8/6/2013	FND 5/8" IR. W/YPC "HANLEY ENGR. PLS 1206" (P1992-012)

ANDERSON-PERRY & ASSOCIATES
1901 N. FIR ST., LA GRANDE, OR., 97850
MAP OF SURVEY
RIGHT-OF-WAY & HORIZONTAL CONTROL
BEST FRONTAGE ROAD (COUNTY RD 542)
SECTIONS 9, 10, 15 & 16; T9S R40E W.M.
BAKER COUNTY
FOR BAKER COUNTY & ODOT REGION 5 NOVEMBER 2014
3050 E STREET SCALE: 1"=100'
BAKER CITY, OR. 97814 APA JOB #90-51 SHEET 3 OF 6

FILED November 24, 2014
BAKER COUNTY SURVEYOR
SURVEY NO. 9-40-727