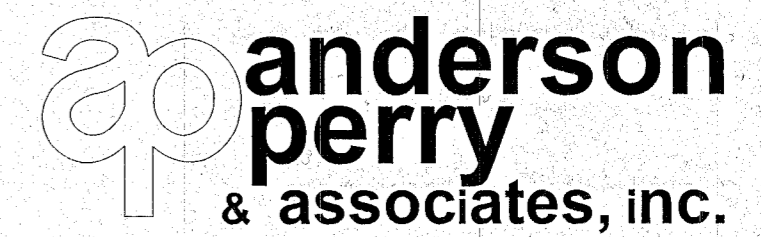
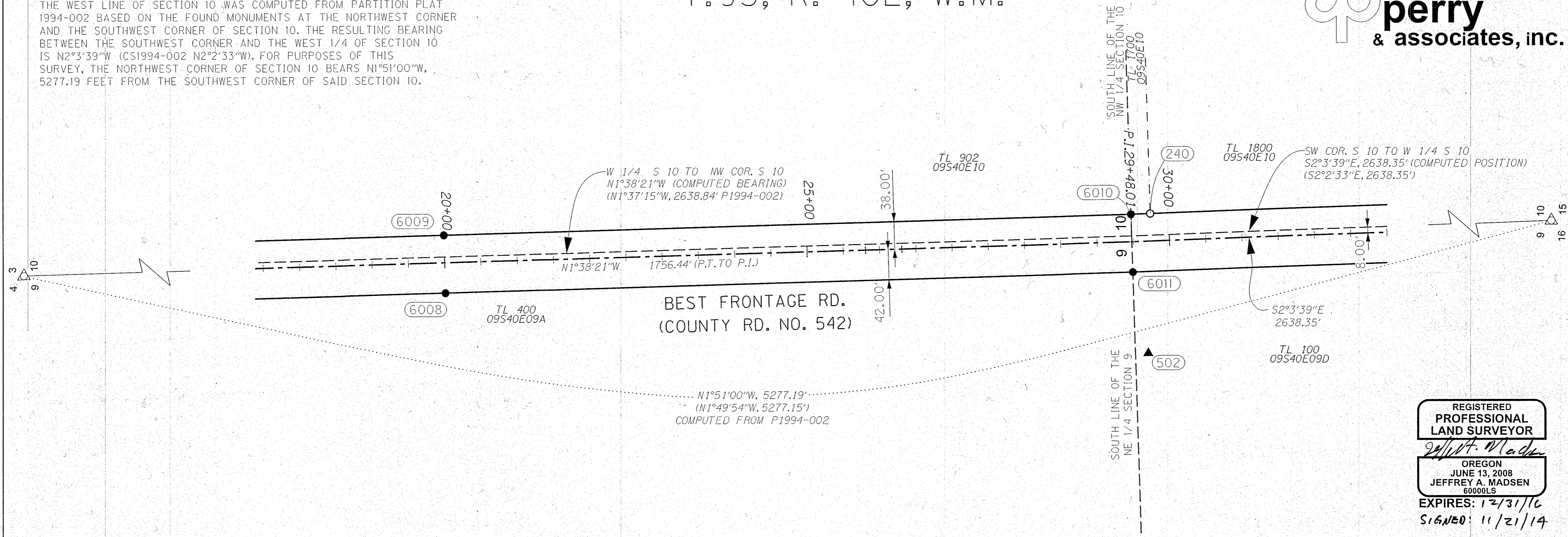


N.E. 1/4 SEC. 10 AND N.W. 1/4 SEC 9,
T.9S, R. 40E, W.M.



BASIS OF BEARINGS

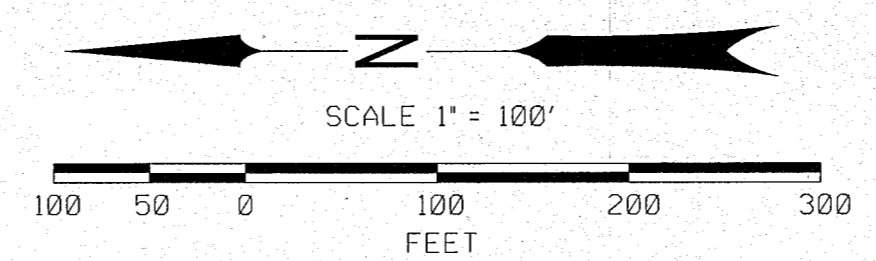
THE WEST LINE OF SECTION 10 WAS COMPUTED FROM PARTITION PLAT 1994-002 BASED ON THE FOUND MONUMENTS AT THE NORTHWEST CORNER AND THE SOUTHWEST CORNER OF SECTION 10. THE RESULTING BEARING BETWEEN THE SOUTHWEST CORNER AND THE WEST 1/4 OF SECTION 10 IS N2°3'39"W (CS1994-002 N2°2'33"W). FOR PURPOSES OF THIS SURVEY, THE NORTHWEST CORNER OF SECTION 10 BEARS N1°51'00"W, 5277.19 FEET FROM THE SOUTHWEST CORNER OF SAID SECTION 10.



REGISTERED
PROFESSIONAL
LAND SURVEYOR
Jeffrey A. Madson
OREGON
JUNE 13, 2008
JEFFREY A. MADSEN
60000LS
EXPIRES: 12/31/16
SIGNATURE: 11/21/14

SET MONUMENT LIST

PT. NO.	LDP NORTHING	LDP EASTING	STATION & ALIGNMENT	OFFSET	DATE	DESCRIPTION
6006	425146.74	8900339.41	11+91.57	38.00 LT	10/13/14	SET 5/8" X 30" REBAR WITH 1 1/2" ALUMINUM CAP MARKED "APA 60000LS"
6007	425144.46	8900259.44	11+91.57	42.00 RT	10/13/14	SET 5/8" X 30" REBAR WITH 1 1/2" ALUMINUM CAP MARKED "APA 60000LS"
6008	424336.36	8900282.56	20+00.00	42.00 RT	10/13/14	SET 5/8" X 30" REBAR WITH 1 1/2" ALUMINUM CAP MARKED "APA 60000LS"
6009	424338.64	8900362.53	20+00.00	38.00 LT	10/13/14	SET 5/8" X 30" REBAR WITH 1 1/2" ALUMINUM CAP MARKED "APA 60000LS"
6010	423391.16	8900389.64	29+47.87	38.00 LT	10/13/14	SET 5/8" X 30" REBAR WITH 1 1/2" ALUMINUM CAP MARKED "APA 60000LS"
6011	423388.58	8900309.68	-	-	10/13/14	SET 5/8" X 30" REBAR WITH 1 1/2" ALUMINUM CAP MARKED "APA 60000LS"



LEGEND

●	SET MONUMENT	---	ALIGNMENT CENTERLINE
○	FOUND MONUMENT	---	RIGHT-OF-WAY
▲	SET NETWORK POINT	---	PROPERTY LINE
##	MONUMENT/CONTROL POINT NUMBER	---	GOVERNMENT SECTION LINE

RECOVERED MONUMENT LIST

PT. NO.	LDP NORTHING	LDP EASTING	STATION & ALIGNMENT	OFFSET	DATE	DESCRIPTION & REFERENCE DOCUMENTS
240	423364.74	8900390.65	29+74.59	38.06 LT	8/2/2013	FND 5/8" IR W/NO CAP (CS 9-40-234)

SET CONTROL LIST

PT. NO.	LDP NORTHING	LDP EASTING	STATION & ALIGNMENT	OFFSET	DATE	DESCRIPTION
502	423367.40	8900197.91	29+22.13	152.46 RT	8/2/2013	SET 1"2" IRON ROD (REBAR) WITH RED PLASTIC CAP INSCRIBED "APA CONTROL"

ANDERSON-PERRY & ASSOCIATES
1901 N. FIR ST., LA GRANDE, OR., 97850
MAP OF SURVEY
RIGHT-OF-WAY & HORIZONTAL CONTROL
BEST FRONTAGE ROAD (COUNTY RD 542)
SECTIONS 9, 10, 15 & 16; T9S R40E W.M.
BAKER COUNTY
FOR BAKER COUNTY & ODOT REGION 5 NOVEMBER 2014
3050 E STREET SCALE: 1"=100'
BAKER CITY, OR. 97814 APA JOB #90-51 SHEET 2 OF 6

FILED November 24, 2014
BAKER COUNTY SURVEYOR
SURVEY NO. 9-40-727