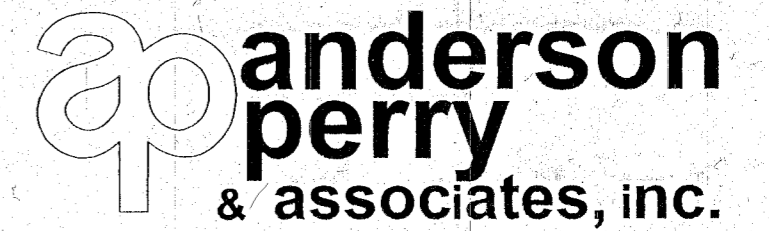


N.E. 1/4 SEC. 10 AND N.W. 1/4 SEC. 9,  
T. 9S, R. 40E, W.M.



**SURVEY NARRATIVE**

THIS SURVEY WAS PERFORMED AT THE REQUEST OF BAKER COUNTY IN CONJUNCTION WITH THE BEST FRONTAGE ROAD REALIGNMENT AND IMPROVEMENTS PROJECT IN COOPERATION WITH THE OREGON DEPARTMENT OF TRANSPORTATION. AN EXTENSIVE SEARCH WAS MADE TO LOCATE MONUMENTS WITHIN THE PROJECT AREA IN ORDER TO RESOLVE THE EXISTING CENTERLINE ALIGNMENT AND RIGHT-OF-WAY AS WELL AS PERPETUATE THE POSITIONS OF EXISTING MONUMENTS AS PER THE REQUIREMENTS OF ORS 209.140 & 209.150.

LANDS HAVE BEEN ACQUIRED BY THE COUNTY AS PART OF THIS PROJECT TO REALIGN A PORTION OF BEST FRONTAGE ROAD. THE ENTIRE RIGHT-OF-WAY HAS BEEN MONUMENTED AS SHOWN PER ORS 368.106

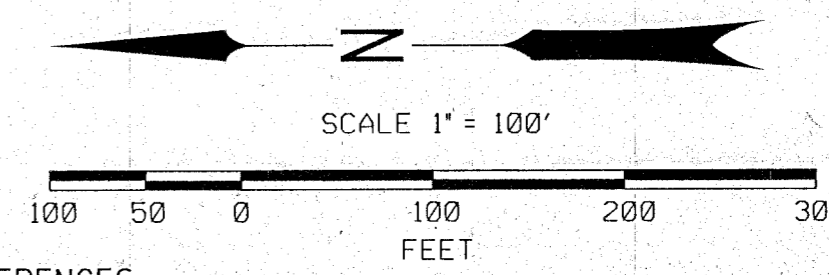
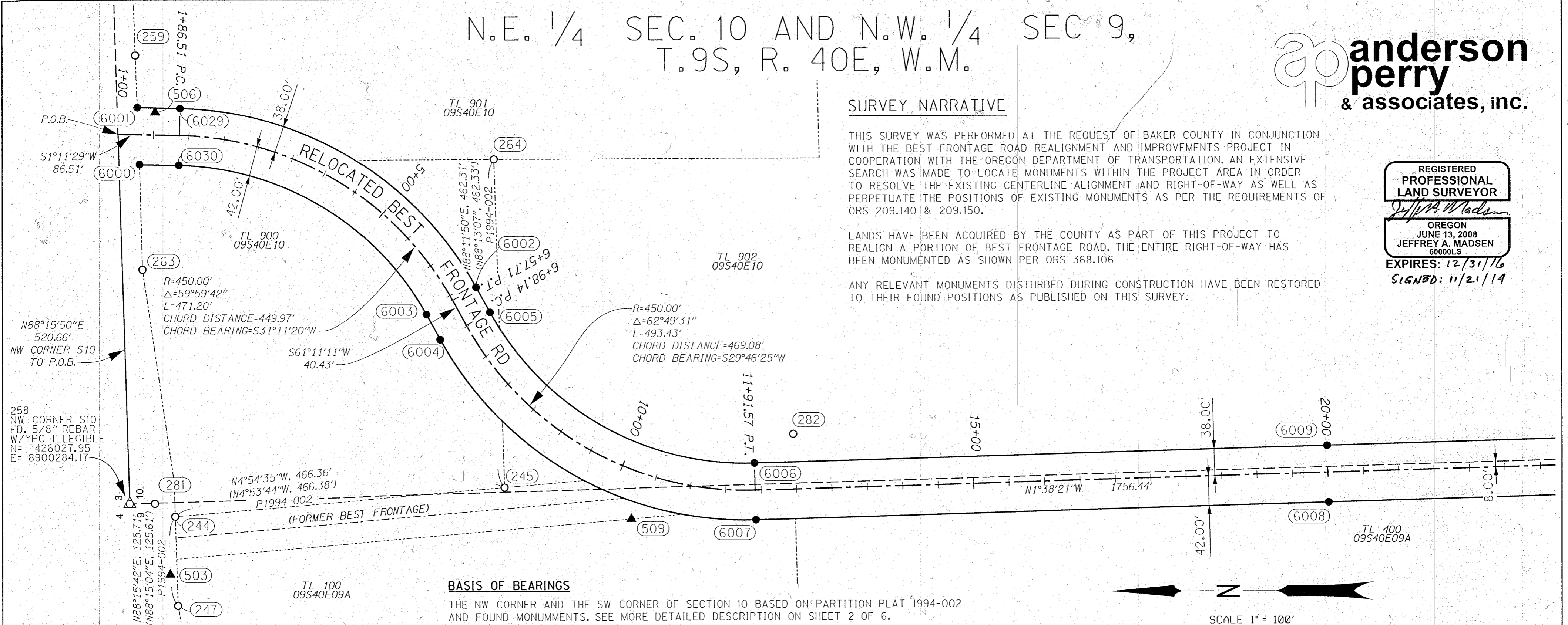
ANY RELEVANT MONUMENTS DISTURBED DURING CONSTRUCTION HAVE BEEN RESTORED TO THEIR FOUND POSITIONS AS PUBLISHED ON THIS SURVEY.

REGISTERED  
PROFESSIONAL  
LAND SURVEYOR

*Jeffrey A. Madsen*

OREGON  
JUNE 13, 2008  
JEFFREY A. MADSEN  
60000LS

EXPIRES: 12/31/16  
SIGNED: 11/21/14



**SET MONUMENT LIST**

PT. NO.	LDP NORTHING	LDP EASTING	STATION & ALIGNMENT	OFFSET	DATE	DESCRIPTION
6000	426013.53	8900761.96	1+31.07	42.00 RT	10/13/14	SET 5/8" X 30" REBAR WITH 1 1/2" ALUMINUM CAP MARKED "APA 60000LS"
6001	426016.53	8900842.04	1+26.41	38.00 LT	10/13/14	SET 5/8" X 30" REBAR WITH 1 1/2" ALUMINUM CAP MARKED "APA 60000LS"
6002	425539.00	8900588.09	6+57.71	38.00 LT	10/13/14	SET 5/8" X 30" REBAR WITH 1 1/2" ALUMINUM CAP MARKED "APA 60000LS"
6003	425609.10	8900549.53	6+57.71	42.00 RT	10/13/14	SET 5/8" X 30" REBAR WITH 1 1/2" ALUMINUM CAP MARKED "APA 60000LS"
6004	425589.61	8900514.11	6+98.14	42.00 RT	10/13/14	SET 5/8" X 30" REBAR WITH 1 1/2" ALUMINUM CAP MARKED "APA 60000LS"
6005	425519.52	8900552.67	6+98.14	38.00 LT	10/13/14	SET 5/8" X 30" REBAR WITH 1 1/2" ALUMINUM CAP MARKED "APA 60000LS"
6006	425146.74	8900339.41	11+91.57	38.00 LT	10/13/14	SET 5/8" X 30" REBAR WITH 1 1/2" ALUMINUM CAP MARKED "APA 60000LS"
6007	425144.46	8900259.44	11+91.57	42.00 RT	10/13/14	SET 5/8" X 30" REBAR WITH 1 1/2" ALUMINUM CAP MARKED "APA 60000LS"
6008	424336.36	8900282.56	20+00.00	42.00 RT	10/13/14	SET 5/8" X 30" REBAR WITH 1 1/2" ALUMINUM CAP MARKED "APA 60000LS"
6009	424338.64	8900362.53	20+00.00	38.00 LT	10/13/14	SET 5/8" X 30" REBAR WITH 1 1/2" ALUMINUM CAP MARKED "APA 60000LS"
6029	425956.44	8900840.79	1+86.51	38.00 LT	10/13/14	SET 5/8" X 30" REBAR WITH 1 1/2" ALUMINUM CAP MARKED "APA 60000LS"
6030	425958.10	8900760.80	1+86.51	42.00 RT	10/13/14	SET 5/8" X 30" REBAR WITH 1 1/2" ALUMINUM CAP MARKED "APA 60000LS"

**SET CONTROL LIST**

PT. NO.	LDP NORTHING	LDP EASTING	STATION & ALIGNMENT	OFFSET	DATE	DESCRIPTION
503	425970.92	8900184.13	N/A	N/A	8/2/2013	SET 1/2" REBAR WITH RED PLASTIC CAP MARKED "APA CONTROL"
506	425991.47	8900835.31	1+51.60	33.80 LT	8/6/2013	SET HUB + MAGNAIL
509	425320.23	8900261.01	10+35.32	66.21 RT	8/29/2013	SET HUB + TACK

**RECOVERED MONUMENT LIST**

PT. NO.	LDP NORTHING	LDP EASTING	STATION & ALIGNMENT	OFFSET	DATE	DESCRIPTION & REFERENCE DOCUMENTS
244	425963.83	8900266.00	N/A	N/A	8/2/2013	FND 5/8" IR W/YPC "HANLEY ENGR. PLS 1206" (CS 9-40-392)
245	425499.18	8900305.91	N/A	N/A	8/2/2013	FND 5/8" IR W/YPC "HANLEY ENGR. PLS 1206" (CS 9-40-392)
247	425960.01	8900140.35	N/A	N/A	8/6/2013	FND 5/8" IR W/ 1 1/2" ALCAP "OREGON STATE HWY DEPT" (SHOWN ON CS 9-40-392, RECORD UNKNOWN)
259	426019.37	8900915.02	1+22.05	110.91 LT	8/6/2013	FND 5/8" IR W/ 1 1/2" ALCAP "OREGON STATE HWY DEPT" (CS 9-40-421)
263	426009.63	8900614.07	N/A	N/A	8/6/2013	FND 5/8" IR W/ 1 1/2" ALCAP "OSHD" (SHOWN ON CS 9-40-392, RECORD UNKNOWN)
264	425513.73	8900767.99	N/A	N/A	8/6/2013	FND 5/8" IR W/YPC, ILLEGIBLE (CS 9-40-392)
281	425992.44	8900284.25	N/A	N/A	9/11/2013	FND 5/8" IR W/ 1 1/2" ALCAP "OREGON STATE HWY DEPT RP TRAV4 35.46" (RECORD UNKNOWN)
282	425091.82	8900380.79	12+47.66	77.80 LT	9/11/2013	FND 5/8" IR W/YPC "RPE2808" (RECORD UNKNOWN)

**REFERENCES**

PARTITION PLATS: P1991-008; P1992-012; P1994-002; P1999-015; P2001-010; P1990-003  
 SURVEYS: 9-40-234; 9-40-121BC; 9-40-46; 9-40-64BC; 9-40-392; 9-40-421; 9-40-46A; 9-40-8  
 EASEMENTS: 82-20-076; 11-13-0233; 99-52-239  
 DEEDS: 04-22-0205; 04-22-0207; 05-07-0015

**LEGEND**

●	SET MONUMENT	---	ALIGNMENT CENTERLINE
○	FOUND MONUMENT	---	RIGHT-OF-WAY
▲	SET NETWORK POINT	---	PROPERTY LINE
###	MONUMENT/CONTROL POINT NUMBER	---	GOVERNMENT SECTION LINE

**ANDERSON-PERRY & ASSOCIATES**

1901 N. FIR ST., LA GRANDE, OR., 97850  
 MAP OF SURVEY  
 RIGHT-OF-WAY & HORIZONTAL CONTROL  
 BEST FRONTAGE ROAD (COUNTY RD 542)  
 SECTIONS 9, 10, 15 & 16; T9S R40E W.M.  
 BAKER COUNTY

FOR BAKER COUNTY & ODOT REGION 5  
 3050 E STREET  
 BAKER CITY, OR, 97814

NOVEMBER 2014  
 SCALE: 1"=100'  
 SHEET 1 OF 6

FILED November 21, 2014  
 BAKER COUNTY SURVEYOR  
 SURVEY NO. 9-40-727