

S1/2NW1/4, Sec. 21, Twp. 9 S., Rng. 40 E., W.M.

PARTITION PLAT No. P2014-010

SHEET 1 of 2

OREGON DEPT. OF TRANSPORTATION
REGION 5 HEADQUARTERS
RIGHT-OF-WAY DIVISION 541-963-3177
 3012 ISLAND AVENUE, LA GRANDE, OREGON 97850

REGISTERED PROFESSIONAL LAND SURVEYOR
Robert E. Butler
 OREGON
 JULY 25, 1995
 ROBERT ERICH BUTLER
 2733
 EXPIRES 12/31/2015

I, Robert Erich Butler, hereby certify that this is an exact duplicate copy of the partition plat as submitted to the Baker County Clerk for recording.

Robert E. Butler

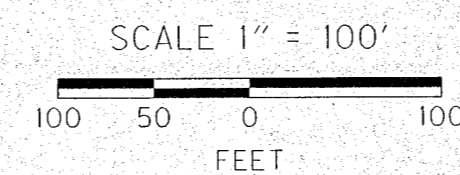
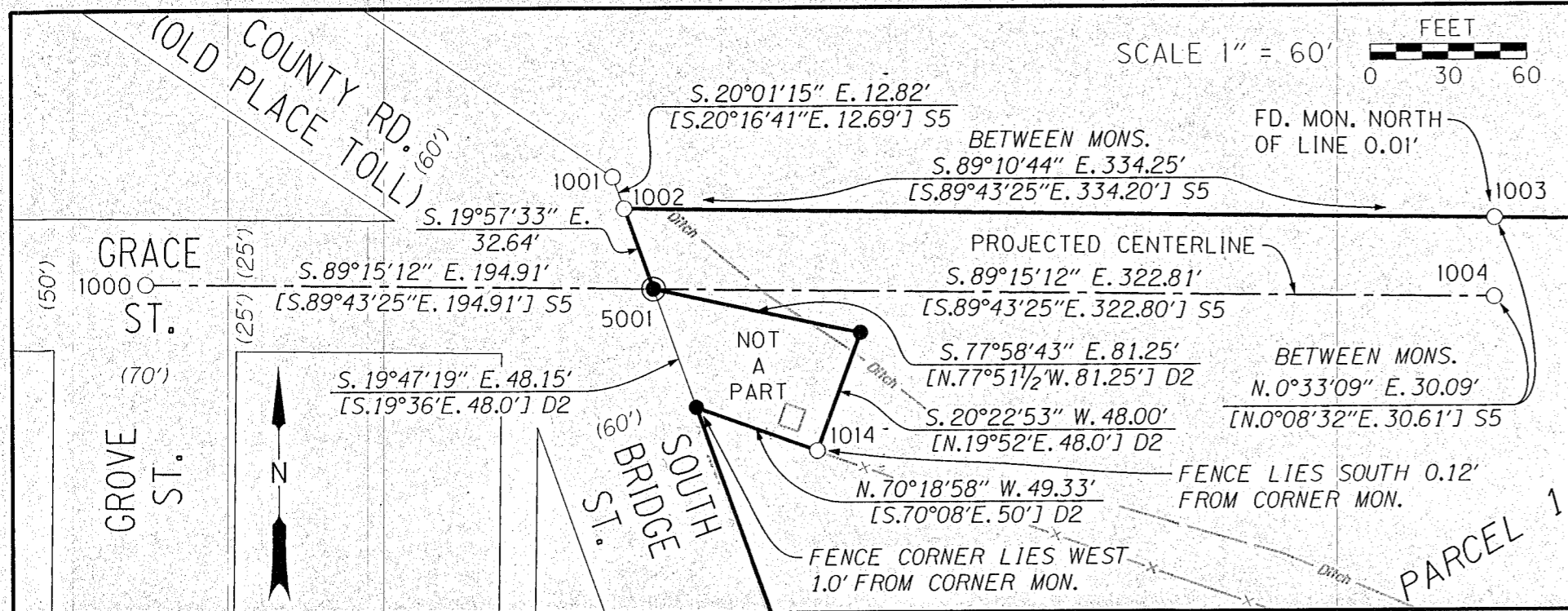
NOTES

#	DESCRIPTION (REFERENCES ARE OF BAKER COUNTY RECORDS)
E1	SMITH IRRIGATION DITCH, BOOK 62, PAGE 273 OVER AND ACROSS THE SE1/4NW1/4 OF SEC. 21.
E2	ELECTRIC TRANSMISSION EASEMENT NOT EXPLICITLY LOCATED BY BK. 108, PG. 221 OVER AND ACROSS NE CORNER OF SE1/4NW1/4 OF SEC. 21.
E3	POLE LINE EASEMENT NOT EXPLICITLY LOCATED BY BK. 131, PG. 442 NEAR CORNER OF GRACE & SOUTH BRIDGE STREET
E4	TELECOMMUNICATIONS LINE EASEMENT, DOC. NO. B 1351 0131, DEPICTED BY EXHIBIT 'B' AS IN THE NE CORNER OF PROPERTY. HOWEVER INCORRECTLY LOCATED BY DESCRIPTION IN EXHIBIT 'A' OF SAME DOC. NO.
E5	SEWER LINE EASEMENT, DOC B 1440 0159, OVER AND ACROSS SOUTHERLY 15' OF PARCEL 3 HEREON
UI	NO EASEMENT RECORDED FOR GAS LINE FOUND IN THE SOUTH 8' OF THE WEST 730' OF PARCEL 3 HEREON. ANGLE POINT TOWARDS SOUTH BOUNDARY, LIES 248.1' FROM MON. CORNER

MONUMENT POINT TABLE

PNT.	MON. DESCRIPTION & [REFERENCE DOCUMENTS], SEE SHEET 2 FOR REFERENCE INDEX
1000	FD. 1" PIPE IN MON. BOX, DOWN 4" & BENT SLIGHTLY, AT INT. OF GRACE & GROVE ST. [S5]
1001	FD. 5/8" IRON ROD W/ YELLOW PL. CAP MKD.: "HANLEY ENGR. PLS 1206", AT GROUND LEVEL [S5]
1002	FD. 5/8" IRON ROD W/ YELLOW PL. CAP MKD.: "HANLEY ENGR. PLS 1206" [S5]
1003	FD. 2-3/4" STEEL SHAFT, W/ 6-1/2" DIAM. STEEL PLATE AT TOP W/ 8 HOLES, UP 12" ON SLOPE [S5]
1004	FD. 1-1/8" STEEL SHAFT W/ DEFORMED TOP & CENTERED ON MOST CENTERED OF PUNCHMARKS [S5]
1014	FD. 1" IRON PIPE, AT GROUND LEVEL, IN OLD STONE WALL UNDER WIRE FENCE, LIES 2.5' S. OF GUY ANCHOR [D2]
1015	FD. 1" IRON PIPE IN FRONT YARD, LIES 5.9' N. OF PNT. 1016
1016	FD. 1/2" IRON ROD W/ YELLOW PL. CAP MKD.: "RPE 2808", W. OF CONC. FENCE STRIP [S2]
1017	FD. 3/4" IRON ROD W/O CAP, DOWN 1" AT E. END OF GARDEN, 1' INSIDE OF GARDEN FENCE [S4]
5001	SET 1" COPPER DISC W/ 1-1/2" STEM MKD.: "ODOT" IN ROCK
5013	SET 1" COPPER DISC W/ 1-1/2" STEM MKD.: "ODOT" AT BASE OF CONC. POST

DETAIL



FILED November 12 2014
 BAKER COUNTY SURVEYOR
 SURVEY No. 9-40-726

LEGEND

○	FD. MON. AS NOTED	---	SECTION QUARTER LINE
●	SET 5/8"x30" IRON ROD W/ ODOT ALUM. CAP MKD.: "PLS2733"	---	PARTITION BOUNDARIES
⊙	SET MON. AS NOTED	---	EXISTING RIGHT-OF-WAY
---	FENCE LINE	---	EASEMENT BOUNDARIES
□	BUILDINGS	(##)	= DATA ## PER RECORD
		[##]**	= DATA ## PER REFERENCE **, SEE REFERENCE INDEX ON SHEET 2

