

# LAND PARTITION PLAT NO. P2014-001

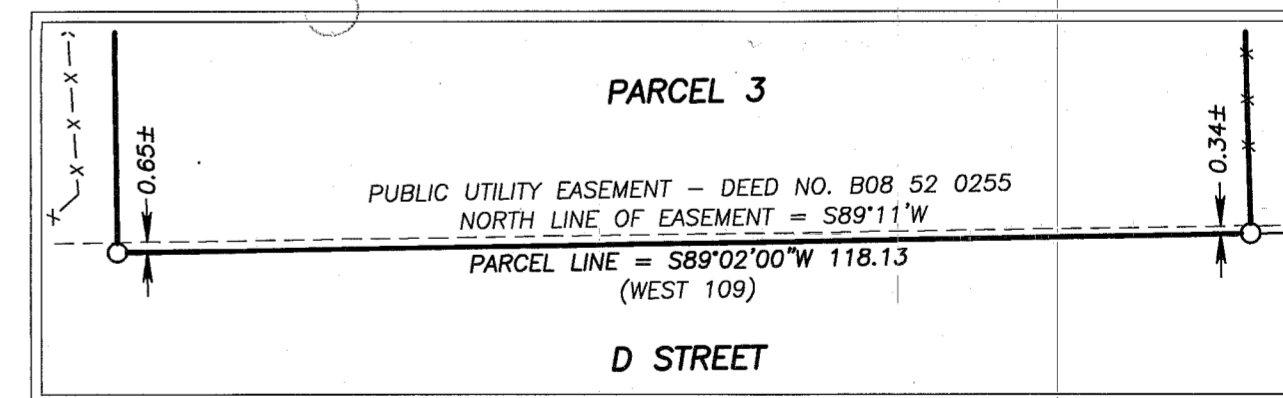
SITUATED IN THE NE1/4NW1/4 SECTION 16, T.9S., R.40E., W.M.,  
BAKER CITY, BAKER COUNTY, OREGON

## LEGEND

- ◆ FOUND 5/8" IRON PIN WITH ATTACHED ALUMINUM CAP MARKED "ODOT" IN A CAST IRON CITY MON CASE - SURVEY NO. 9-40-682
- FOUND 5/8" IRON PIN WITH ATTACHED YELLOW PLASTIC CAP MARKED "HANLEY ENGRG PLS 1206" FROM SURVEY NO. 9-40-416 UNLESS OTHERWISE NOTED
- FOUND 5/8" IRON PIN WITH ATTACHED YELLOW PLASTIC CAP MARKED "HANLEY ENGRG PLS 1206" SHOWN AS FOUND ON MAP OF SURVEY NO. 9-40-201
- FOUND 5/8" IRON PIN WITH ATTACHED YELLOW PLASTIC CAP MARKED "HANLEY ENGRG PLS 1206" FROM SURVEY NO. 9-40-264
- FOUND 1/2" IRON PIN WITH ATTACHED YELLOW PLASTIC CAP MARKED "PLS 645" FROM SURVEY NO. 9-40-551
- ⊗ FOUND 1/2" BRASS DISC MARKED "ODOT" GROUTED INTO CONCRETE FROM SURVEY NO. 9-40-682
- ⊗ FOUND UNRECORDED 5/8" IRON PIN WITH ATTACHED YELLOW PLASTIC CAP MARKED "HANLEY ENGRG PLS 1817" - SEE NARRATIVE
- SET 5/8"x30" IRON PIN WITH ATTACHED YELLOW PLASTIC CAP MARKED BENCHMARK SURVEYING
- ( ) DEED AND/OR PLAT RECORD BEARING AND DISTANCE
- [ ] RECORD BEARING AND DISTANCE FROM SURVEY NO. 9-40-130BC
- 1[ ] RECORD BEARING AND DISTANCE FROM SURVEY NO. 9-40-175BC
- 2[ ] RECORD BEARING AND DISTANCE FROM SURVEY NO. 9-40-201
- 3[ ] RECORD BEARING AND DISTANCE FROM SURVEY NO. 9-40-264
- 4[ ] RECORD BEARING AND DISTANCE FROM SURVEY NO. 9-40-416
- 5[ ] RECORD BEARING AND DISTANCE FROM SURVEY NO. 9-40-501MP
- 6[ ] RECORD BEARING AND DISTANCE FROM SURVEY NO. 9-40-657
- 7[ ] RECORD BEARING AND DISTANCE FROM SURVEY NO. 9-40-551
- x-x FENCE LINE
- ▨ NEW EASMENT FOR UTILITIES AND FUTURE ROAD PURPOSES. SEE DECLARATION ON SHEET 2.

## DETAIL

NOT TO SCALE



## BASIS OF BEARINGS

RECORD SURVEY NO. 9-40-657  
D STREET BEARS S.89°02'00"W.  
AS SHOWN

FOUND AN UNRECORDED 1/2" IRON PIN 1.39' SOUTH AND 2.18' WEST OF THE INITIAL POINT.

FOUND MON. S03°19'48"E 1.49' FROM Q INTERSECTION AS PER SURVEY 9-40-501MP & 9-40-657

INITIAL POINT (WEST 109)  
S89°02'00"W 118.13

PUBLIC UTILITY EASEMENT B08 52 0255 SEE DETAIL

(EAST 100)  
S89°02'00"W 100.00

2[207.88]  
(207.88)

(NORTH 60) 5[S89°02'00"W 100.00] 6[S89°02'00"W 134.00] S89°02'00"W 100.00 [S89°02'W]

### BASIS OF BEARINGS

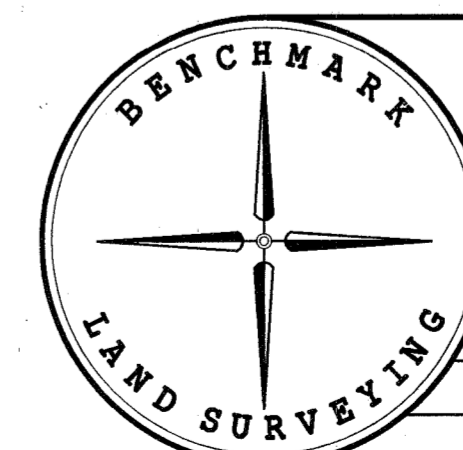
NW CORNER ACRE LOT 3, BLOCK 1, G.W. CAMPBELL'S ADDITION - FD. BRASS ODOT DISC 3.15' SOUTH AND 2.83' WEST AS PER SURVEY NO. 9-40-501MP

FD. 5/8" IRON PIN WITH YELLOW PLASTIC CAP MARKED "HANLEY ENGR. PLS 1817" FROM SURVEY NO. 9-40-501MP

LINE	BEARING	DIST.
L1	N01°19'08"W	15.00
L2	N00°58'00"W	60.00

I DO HEREBY CERTIFY THAT THIS IS A TRUE AND EXACT COPY OF THE ORIGINAL PLAT.

*Jason L. Hatfield*  
BENCHMARK LAND SURVEYING



BENCHMARK LAND SURVEYING  
217 N. CANYON BLVD. JOHN DAY, OREGON  
2101 MAIN STREET, STE 223 BAKER CITY, OREGON  
541-575-1251 ~ 800-699-0516

LAND PARTITION  
SITUATED IN THE NE1/4NW1/4 SECTION 16, T.9S., R.40E., W.M.,  
BAKER CITY, BAKER COUNTY, OREGON

SURVEYED FOR	STEVE AND KRISTI HARRIS	
SURVEYED BY	JLH	2/15/2014
SCALE: 1" = 60'	DRAWN BY: JLH	SHEET 1 OF 2

REGISTERED PROFESSIONAL LAND SURVEYOR

*Jason L. Hatfield*  
OREGON  
NOVEMBER 30, 2007  
JASON L. HATFIELD  
#69454  
EXPIRES: 6/30/2015

FILED Feb. 21, 2014  
BAKER COUNTY SURVEYOR  
SURVEY NO. 9-40-718P