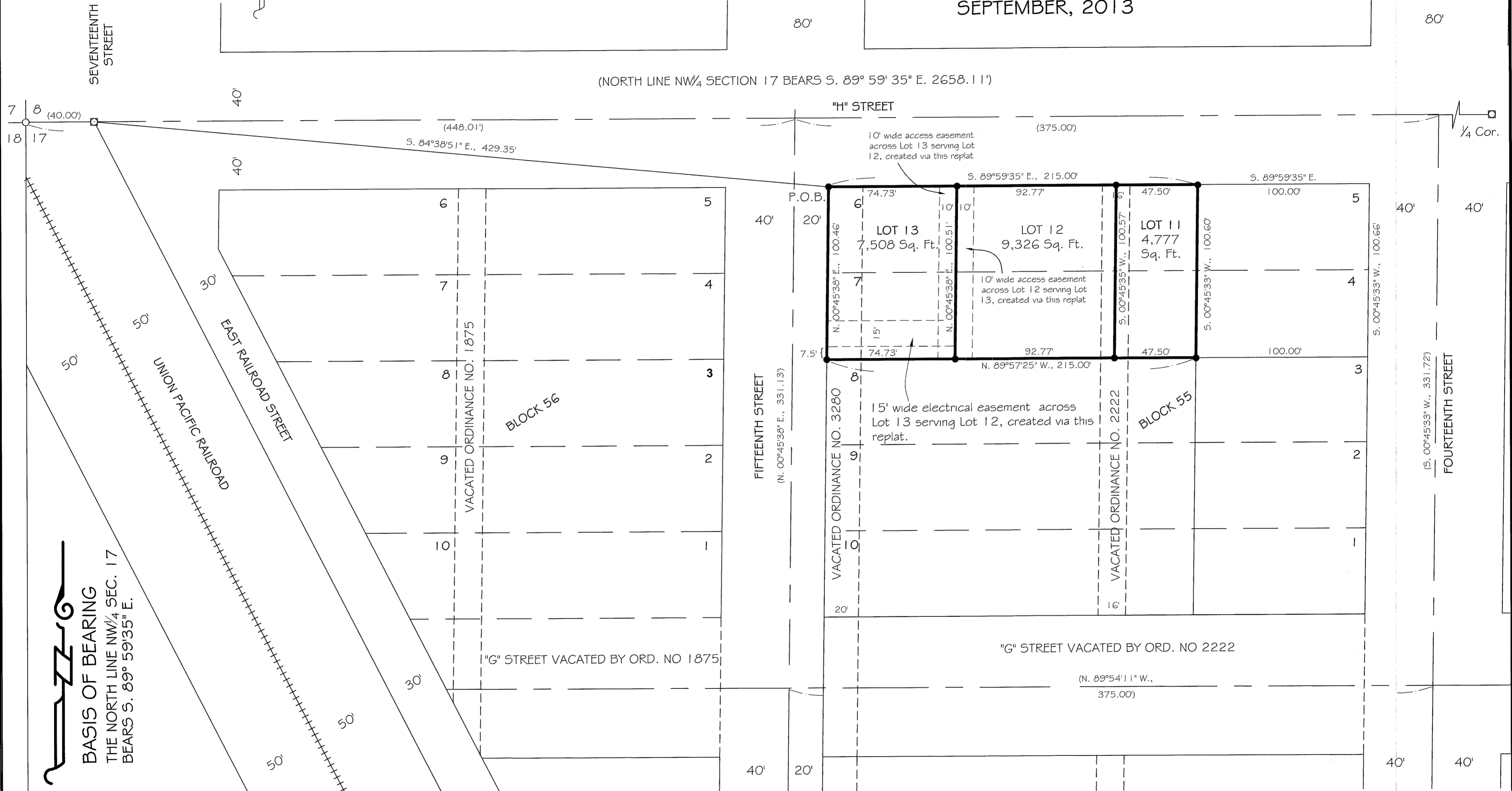


REPLAT NO. P2013-005

HANLEY ENGINEERING, INC.

P.O. BOX 701, 2043 MAIN STREET, BAKER CITY, OREGON 97814 (541) 523-3803

LAND LOCATED IN LOTS 4,5,6 & 7 AND PORTIONS OF VACATED 15TH ST AND A VACATED ALLEY OF BLOCK 55 OF B.W. LEVEN'S 2ND ADDITION, SEC. 17, T. 9 S., R. 40 E., W.M., BAKER CITY, BAKER COUNTY, OREGON
SEPTEMBER, 2013



BASIS OF BEARING
 THE NORTH LINE NW¹/₄ SEC. 17
 BEARS S. 89° 59'35" E.



GLEN AND CLEDITH VANDENBOS
 P.O. BOX 110
 BAKER CITY, OR 97814
 541-518-5384

HANLEY ENGR., INC.
 P.O. BOX 701
 BAKER CITY, OR 97814
 541-523-3803

LEGEND

- Set 5/8" x 30" rebar with plastic cap marked "HANLEY ENGR. PLS 1817".
- Found, Mon in box.
- () Record as per Baker Co. Survey No. 9-40-184

REFERENCES

Baker County Deed No. B08 32 0013
 Baker County Survey No. 9-40-184

I, Thomas J. Hanley, hereby certify that this is an exact duplicate copy of the replat as submitted to the Baker County Clerk for recording.

Thomas J. Hanley
 Thomas J. Hanley

REGISTERED
 PROFESSIONAL
 LAND SURVEYOR

Thomas J. Hanley
 OREGON
 JULY 13, 1979
 THOMAS J. HANLEY
 1817

Renews June 30, 2015
 Page 2

FILED Sept. 13, 2013
 BAKER COUNTY SURVEYOR
 SURVEY NO. 9-40-714P