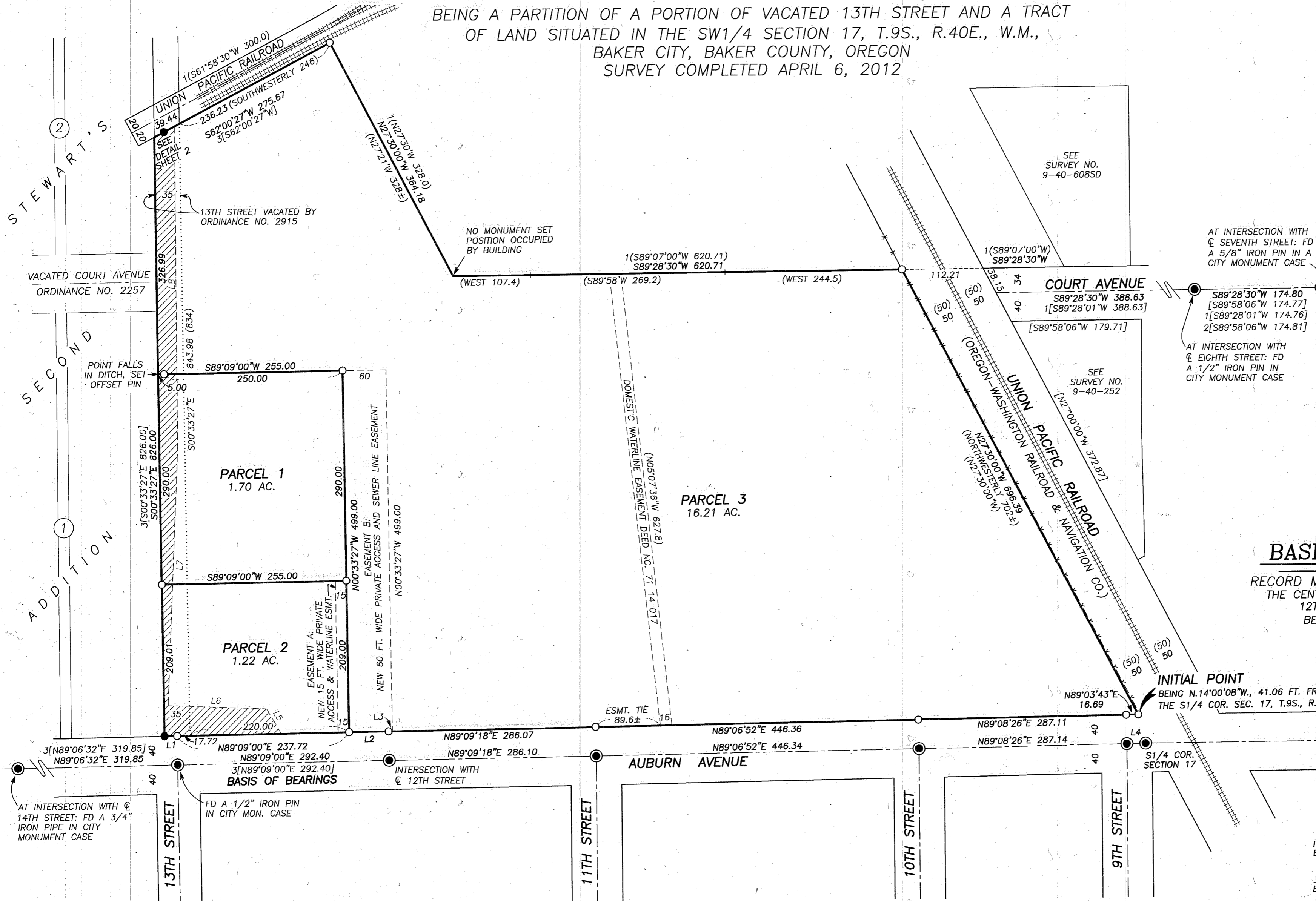


LAND PARTITION PLAT NO. P2012-001

BEING A PARTITION OF A PORTION OF VACATED 13TH STREET AND A TRACT OF LAND SITUATED IN THE SW1/4 SECTION 17, T.9S., R.40E., W.M., BAKER CITY, BAKER COUNTY, OREGON SURVEY COMPLETED APRIL 6, 2012



BASIS OF BEARINGS

RECORD MAP OF SURVEY NO. 9-40-699 THE CENTERLINE OF AUBURN AVE. BETWEEN 12TH STREET AND 13TH STREET BEARS N89°09'00"E AS SHOWN

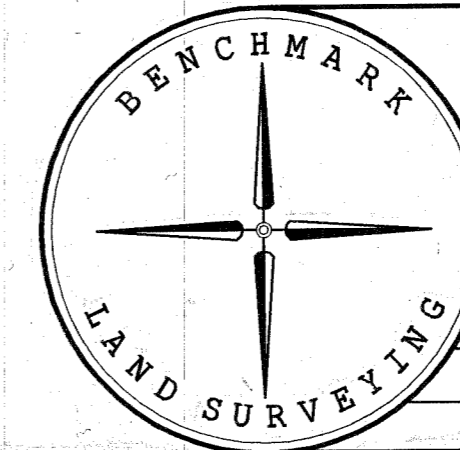
INITIAL POINT BEING N.14°00'08"W., 41.06 FT. FROM THE S1/4 COR. SEC. 17, T.9S., R.40E., W.M.

I DO HEREBY CERTIFY THAT THIS IS A TRUE AND EXACT COPY OF THE ORIGINAL PLAT.

Jason L. Hatfield
BENCHMARK LAND SURVEYING

REFERENCES

RECORD MAP OF SURVEY NO.'S 9-40-252, 9-40-275, 9-40-281, 9-40-318, 9-40-478, 9-40-608SD AND 9-40-699
 BAKER CITY SURVEY NO. AD-21-54 BY PHILO ANDERSON
 UNRECORDED PHILO ANDERSON SURVEY FOR STODDARD LUMBER COMPANY
 DEED RECORD INSTRUMENT NO.'S 74 47 020, 76 27 045, 88 26 008 AND 95 46 072
 AMERITITLE ORDER NO. 29790
 BAKER CITY ORDINANCE NO.'S 2257 & 2915
 PLAT OF STEWART'S SECOND ADDITION TO BAKER CITY
 OREGON-WASHINGTON R.R. DRAWING NO. 54498 DATED 5/23/45



BENCHMARK LAND SURVEYING
 217 N. CANYON BLVD. JOHN DAY, OREGON
 2101 MAIN STREET, STE 223 BAKER CITY, OREGON
 541-575-1251 ~ 800-699-0516

LAND PARTITION
 BEING A PARTITION OF A PORTION OF VACATED 13TH STREET AND A TRACT OF LAND SITUATED IN THE SW1/4 SECTION 17, T.9S., R.40E., W.M., BAKER CITY, BAKER COUNTY, OREGON

SURVEYED FOR	ELLINGSON LUMBER CO.	
SURVEYED BY	JLH	4/6/12
SCALE: 1"=100'	DRAWN BY: JLH	SHEET 1 OF 2

REGISTERED PROFESSIONAL LAND SURVEYOR

Jason L. Hatfield
 OREGON
 NOVEMBER 30, 2007
 JASON L. HATFIELD
 #69454

EXPIRES: 6/30/2013

LINE TABLE

LINE	BEARING	LENGTH
L1	S89°06'32"W	17.28
L2	N89°09'00"E	54.70
L3	N89°09'18"E	5.30
L4	N89°03'43"E	26.00

EASEMENT LINE TABLE

LINE	BEARING	LENGTH
L5	N30°13'00"W	40.00
L6	N87°45'00"W	136.00
L7	N02°34'29"E	357.01
L8	N00°10'30"W	442.00