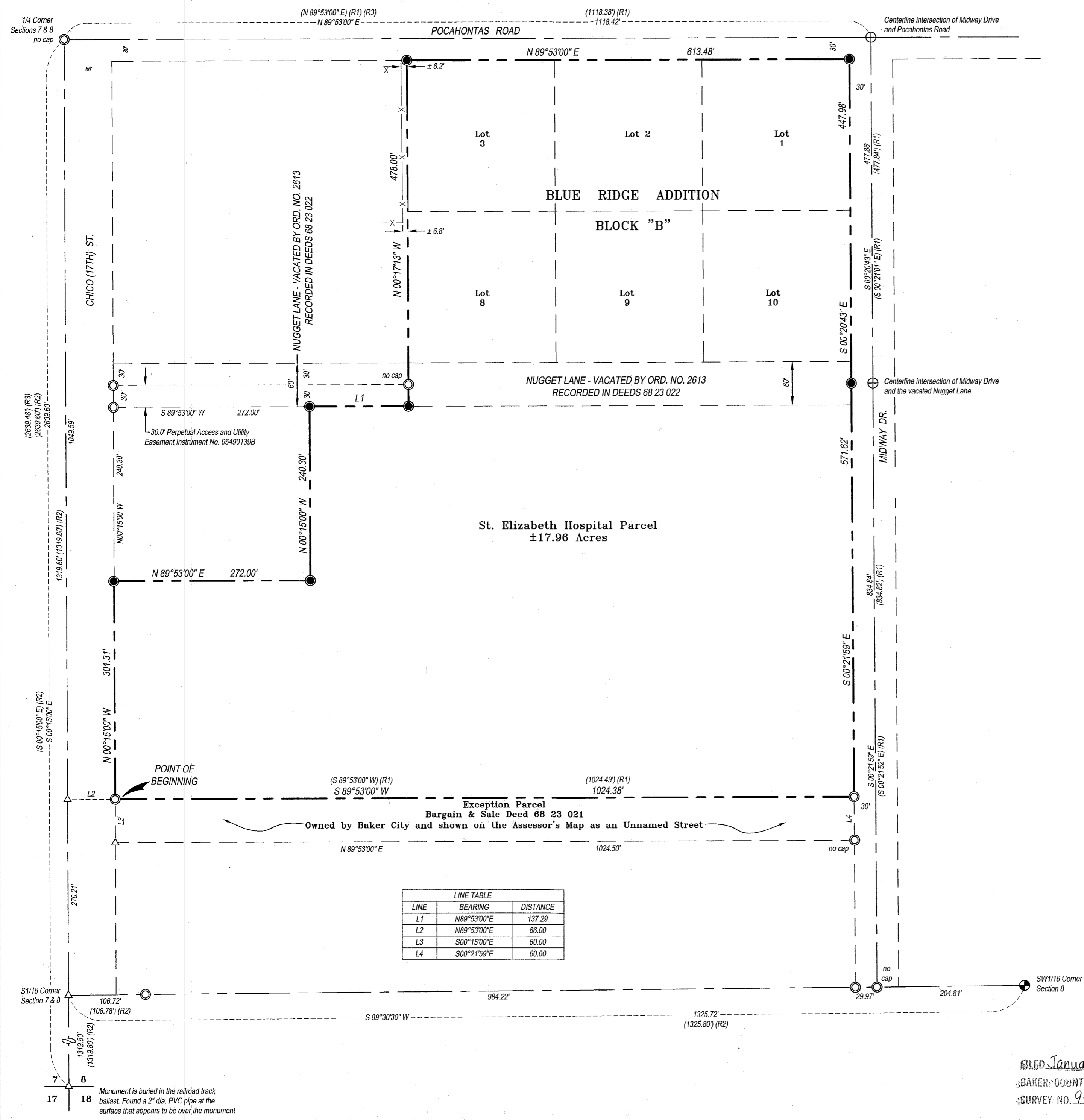
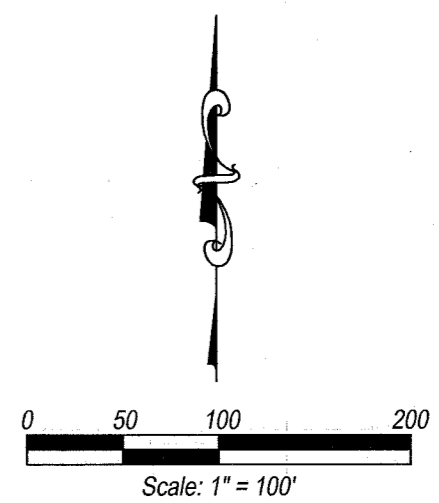


RECORD OF SURVEY

A PARCEL OF LAND LOCATED IN THE NW 1/4 SW 1/4 SECTION 8, T. 9 S. R. 40 E., W.M., BAKER CITY, OREGON



LINE	BEARING	DISTANCE
L1	N89°53'00"E	137.29
L2	N89°53'00"E	66.00
L3	S00°15'00"E	60.00
L4	S00°21'59"E	60.00



- LEGEND**
- △ Calculated point
 - ⊕ Found 1 inch bar in monument box
 - ⊙ Found 1 1/4 inch pipe
 - ⊙ Found 5/8 inch dia. iron pin, "Hanley Eng. PLS 1206", unless otherwise noted
 - Set 5/8 inch dia. x 30 inch iron pin w/plastic cap PLS 78150
 - () Record data
 - Boundary line
 - Section line
 - Parcel line
 - Easement line
 - X-X- Fence line

REFERENCE DATA

R1 - Baker County Survey No. 9-40-326
 R2 - Baker County Survey No. 9-40-276
 R3 - Baker County Survey No. 9-40-222A
 R4 - Warranty Deed Instrument No. 68 23 003

NARRATIVE:

The purpose of this survey is to establish the boundary lines of St. Elizabeth Hospital for Trinity Health Services. The Basis of Bearings for this survey is the centerline of Pocahontas Road between the W1/4 corner of Section 8 and a found monument at the intersection of Pocahontas Road and Midway Drive as shown on Baker County Survey No. 9-40-326.

CERTIFICATE OF SURVEYOR

I, Jeff Beagley, a Registered Professional Land Surveyor hereby certify that this survey was completed on June 10, 2010 and was made by me or under my direct supervision, that the boundary corners are marked as shown and that this map is a true and accurate representation of said survey.

REGISTERED PROFESSIONAL LAND SURVEYOR

Jeff Beagley

OREGON
 JULY 13, 2006
 JEFF BEAGLEY
 78150LS

12/05/11

EXPIRATION DATE: 12/31/11

BAKER COUNTY SURVEYOR

By _____

Received _____

Accepted _____

Survey No. _____

Dwg No. _____

SURVEY FOR: **TRINITY HEALTH SERVICES**

COMPASS LAND SURVEYING

4270 E. AMITY AVE., NAMPA, ID 83687
 (208) 442-0115
 (208) 327-2106 Fax

JOB NO.	DWG NO.	SCALE:	DRAWN BY:	DATE:
4209	4209 BAKER ROS	1"=100'	JWB	07/10/10

FILED January 31, 2012
 BAKER COUNTY SURVEYOR
 SURVEY NO. 9-40-697

Monument is buried in the railroad track ballast. Found a 2" dia. PVC pipe at the surface that appears to be over the monument