

**BAKER COUNTY - CERTIFIED RECORD OF OBLITERATED**

**LAND SURVEY MONUMENT**

**History of Original Corner Monumentation:**

The original property corners and street intersection monuments for Highland Crest III Subdivision were set during the land subdivision process. Professional Land Surveyor James D. Hanley, O.R.L.S. #1206 completed the Subdivision as dated on 8-23-1994. The Subdivision Plat was filed on 9-1-1994 and is recorded as Baker County Record Number 09435128.

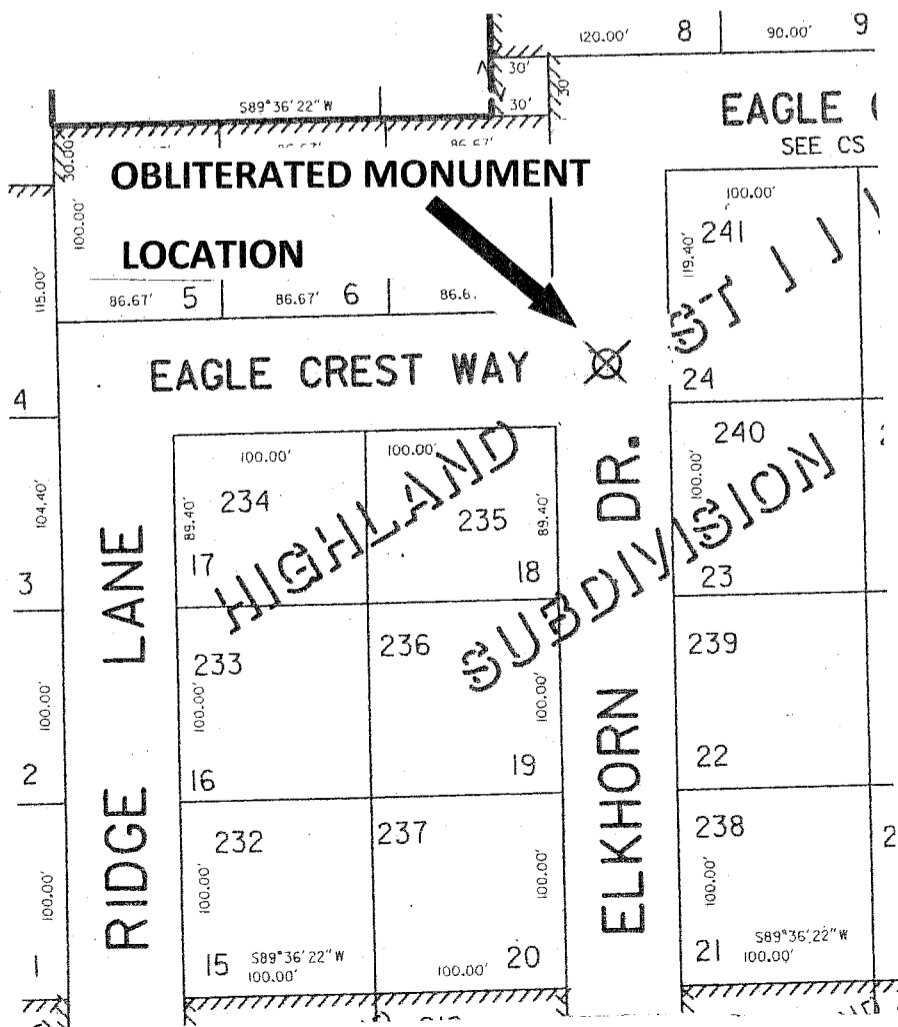
**Description of Evidence Found:**

The surface of the street and the street intersection monument at Eagle Crest Way and Elkhorn Drive has shifted approximately 0.3 feet and is no longer an accurate land survey monument. The asphalt surface of the street was overlaid in June, 2011. The monument box was simply paved over and not raised to the street surface.

**Corner Restoration Work Performed:**

The original street intersection monument and monument box were not disturbed by the street maintenance work. Both the monument and monument box are now buried under 3 inches of asphalt. I believe the monument and box will continue to settle as time passes.

Located in the SW1/4NW1/4 SECTION 20, T.9 S., R.40 E., W.M.



Scale 1" = 100'



Date: July 19, 2011

FILED July 20 2011  
BAKER COUNTY SURVEYOR  
SURVEY NO. 9-40-685