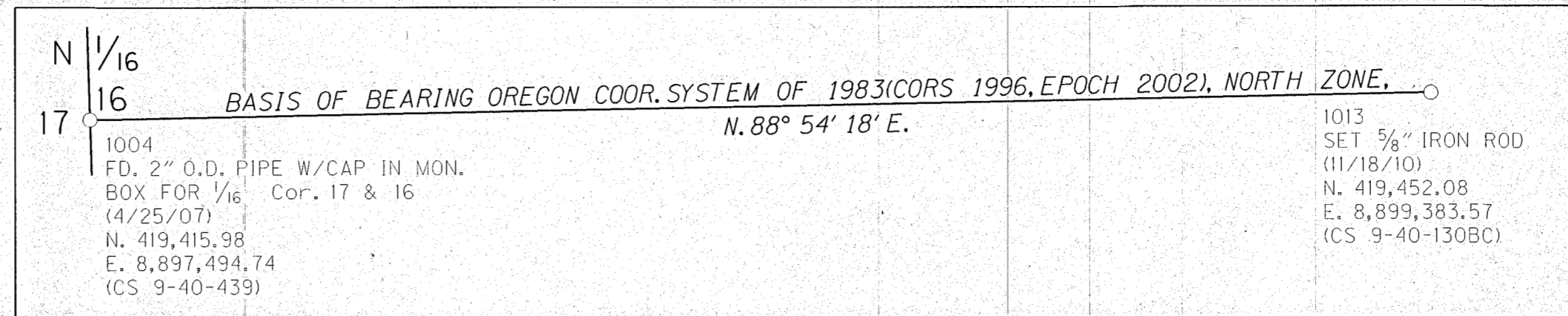


NW¼ SEC. 16 & NE¼ SEC. 17, T. 9 S., R. 40 E., W.M.



NARRATIVE

THE PURPOSE OF THIS SURVEY IS TO PERPETUATE THE POSITION OF THE ORIGINAL EXISTING MONUMENTATION MARKING THE CENTERLINE OF D STREET AND TO SHOW THE RELATION TO THE CONSTRUCTED STREET. THIS IS BEING DONE FOR THE COMPLETED D STREET IMPROVEMENTS PROJECT.

REFERENCES

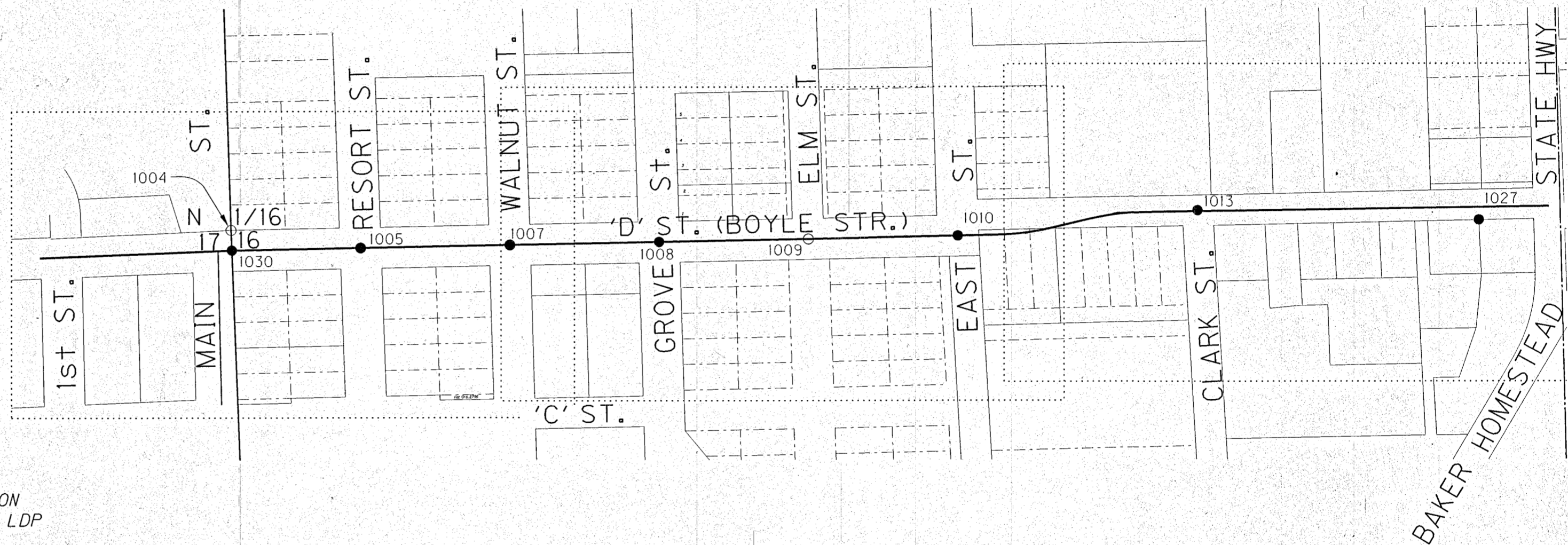
REFERENCE DOCUMENTS USED: GRANDVIEW ADDITION TO BAKER CITY; MIX'S ADDITION TO BAKER CITY; G.W. CAMPBELL'S ADDITION TO BAKER CITY; VANDUSEN'S ADDITION TO THE CITY OF BAKER; E. RUSSELL'S ADDITION TO BAKER CITY; SURVEY OF THE CITY OF BAKER DATED NOVEMBER 1974, REVISED JANUARY, 1979; BAKER COUNTY SURVEY (CS) 9-40-116; CS 9-40-130BC; CS 9-40-327; CS 9-40-439; CS 9-40-443; PARTITION PLAT P1995-027; AND PARTITION PLAT P1999-011.

RESOLUTION

THE CENTER OF 'D' ST. WAS DETERMINED FROM CITY MONUMENTS AT THE INTERSECTIONS OF: 'D' ST. AND MAIN ST. (1001); 'D' ST. AND RESORT ST. (1005); 'D' ST. AND WALNUT ST. (1007); 'D' ST. AND GROVE ST. (1008); 'D' ST. AND ELM ST. (1009); 'D' ST. AND EAST ST. (1010 AND 1011); 'D' ST. AND CLARK ST. (1013). THE SEGMENT OF 'D' ST. FROM CLARK TO CEDAR WAS CONTROLLED BY MONUMENTS 1013 AND 1027.

BASIS OF BEARINGS AND COORDINATES

THE BASIS OF BEARING FOR THIS SURVEY WAS THE OREGON COORDINATE SYSTEM OF 1983(CORS 1996,EPOCH 2002), NORTH ZONE, WITH RESPECT TO THE LOCAL LATITUDE AND GROUND ELEVATION RESULTING IN A BEARING OF N. 88° 54' 18" E. BETWEEN THE N 1/16 CORNER OF SECTIONS 16 AND 17 (POINT #1004), T. 9 S., R. 40 E., W.M. AND A MONUMENT AT THE INTERSECTION OF 'D' ST. AND CLARK ST. (POINT #1013), BAKER CITY, OREGON. THE LDP COORDINATES DEFINE TRUE GROUND DISTANCES. TO CONVERT THE LDP COORDINATES TO THE OREGON COORDINATE SYSTEM OF 1983(CORS 1996,EPOCH 2002), NORTH ZONE, MULTIPLY THE LDP COORDINATES BY 0.99975289.



REGISTERED PROFESSIONAL LAND SURVEYOR
JAY M. ROUNDTREE
OREGON JULY 25, 1991
2518
EXPIRES 12/31/10

LEGEND

- SET MON. AS DESCRIBED
- FOUND MON. AS DESCRIBED

CONTROLLING MONUMENT COORDINATE TABLE

PT. NO.	LDP NORTHING	LDP EASTING	DATE	STA.	OFFSET	DESCRIPTION
1004	419,415.98	8,897,494.74	04/07/09	3+75.22	40.05 LT.	FND 2" O.D. PIPE W/CAP IN MON. BOX
1030	419,375.96	8,897,496.26	11/18/10	3+75.18	0.00	SET 5/8" IRON ROD WITH 1/2" ALUM CAP IN MON. BOX MKD. ODOT WITH PUNCHMARK
1005	419,380.80	8,897,748.03	11/18/10	6+26.99	0.04 RT.	SET 5/8" IRON ROD WITH 1/2" ALUM CAP IN MON. BOX MKD. ODOT WITH PUNCHMARK
1007	419,386.46	8,898,039.72	11/18/10	9+18.74	0.03 RT.	SET 5/8" IRON ROD WITH 1/2" ALUM CAP IN MON. BOX MKD. ODOT WITH PUNCHMARK
1008	419,392.03	8,898,331.41	11/18/10	12+10.48	0.11 RT.	SET 5/8" IRON ROD WITH 1/2" ALUM CAP IN MON. BOX MKD. ODOT WITH PUNCHMARK
1009	419,397.74	8,898,623.08	11/18/10	15+02.21	0.05 RT.	FND 1/2 IN. IRON ROD IN MON. BOX, PLACED 1 1/2" ALUM CAP MKD. ODOT
1013	419,452.08	8,899,383.57	11/18/10	22+66.81	1.81 LT.	SET 5/8" IRON ROD WITH 1/2" ALUM CAP IN MON. BOX MKD. ODOT WITH PUNCHMARK
1027	419,433.25	8,899,933.17	11/18/10	28+16.08	25.01 RT.	SET 1 1/8 IN. DIAM. COPPER DISK IN SIDEWALK



OREGON DEPARTMENT OF TRANSPORTATION

HORIZONTAL CONTROL, RECOVERY AND RETRACEMENT MAP
'D' STREET IMPROVEMENTS
BAKER CITY
BAKER COUNTY

ODOT REGION 5
3012 ISLAND AVENUE
LA GRANDE, OR 97850

NOV., 2010
NOT TO SCALE
SHEET 1 OF 4