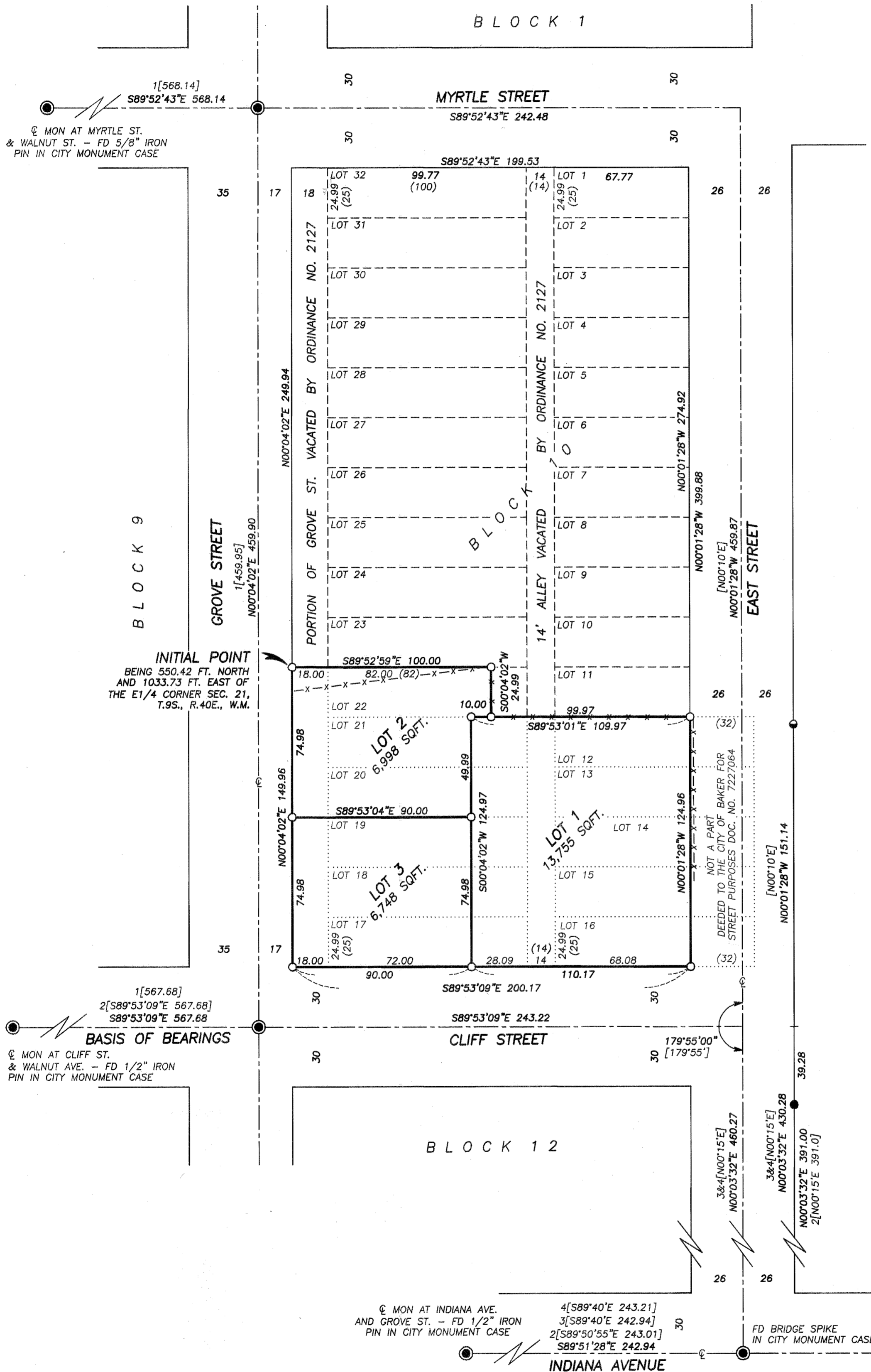


REPLAT NO. P2009-012

BEING A REPLAT OF A PORTION OF BLOCK 10 OF WILLOALE ADDITION TO BAKER CITY AND A PORTION OF VACATED GROVE STREET, SITUATED IN THE SW1/4NW1/4 SECTION 21, T.9S., R.40E., W.M., CITY OF BAKER CITY, BAKER COUNTY, OREGON
SURVEY COMPLETED NOVEMBER 6, 2009

B09 48 0310



BASIS OF BEARINGS

RECORD MAP OF SURVEY NO. 9-40-170BC AS SHOWN

LEGEND

- FOUND 1/2" IRON PIPE BELOW GROUND IN A CAST IRON CITY MONUMENT CASE UNLESS OTHERWISE NOTED.
- FOUND 1/2" IRON PIN - NO CAP FROM SURVEY NO. 9-40-51BC
- FOUND 5/8" IRON PIN WITH ATTACHED YELLOW PLASTIC CAP MARKED "HANLEY ENGR PLS 1206" FROM RECORD SURVEY NO. 9-40-336
- SET 5/8"x30" IRON PIN WITH ATTACHED YELLOW PLASTIC CAP MARKED "BENCHMARK SURVEYING"
- () RECORD BEARING AND DISTANCE
- [] RECORD BEARING AND DISTANCE FROM SURVEY NO. 9-40-51BC
- [] RECORD BEARING AND DISTANCE FROM SURVEY NO. 9-40-166
- [] RECORD BEARING AND DISTANCE FROM SURVEY NO. 9-40-170BC
- [] RECORD BEARING AND DISTANCE FROM SURVEY NO. 9-40-222
- [] RECORD BEARING AND DISTANCE FROM SURVEY NO. 9-40-336
- x-x FENCE LINE

NOTES:

1. THE EAST 32 FEET OF BLOCK 10 WAS DEEDED TO THE CITY OF BAKER CITY FOR STREET PURPOSES PER DOCUMENT NO. 7227064
2. THE ENTIRE WIDTH OF GROVE STREET BETWEEN BLOCKS 9 AND 10 WAS ORIGINALLY VACATED BY ORDINANCE NO. 2127. THE WEST 52 FEET OF GROVE STREET WAS LATER DEEDED BACK TO THE CITY OF BAKER CITY.

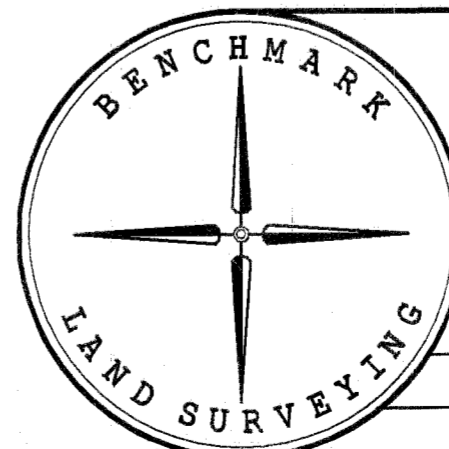
B09 48 0311

B09 48 0312

REGISTERED PROFESSIONAL LAND SURVEYOR

Jason L. Hatfield
OREGON
NOVEMBER 30, 2007
JASON L. HATFIELD
#69454
EXPIRES: 6/30/2011

I DO HEREBY CERTIFY THAT THIS IS A TRUE AND EXACT COPY OF REPLAT NO. P2009-012
Jason L. Hatfield
BENCHMARK LAND SURVEYING



BENCHMARK LAND SURVEYING
217 N. CANYON BLVD. JOHN DAY, OREGON
2101 MAIN STREET, STE 223 BAKER CITY, OREGON
541-575-1251 ~ 800-699-0516
A REPLAT OF A PORTION OF BLOCK 10 OF WILLOALE ADDITION TO BAKER CITY AND A PORTION OF VACATED GROVE STREET, SITUATED IN THE SW1/4NW1/4 SECTION 21, T.9S., R.40E., W.M., CITY OF BAKER CITY, BAKER COUNTY, OREGON

SURVEYED FOR	THE WRIGHT TRUST	
SURVEYED BY	JLH & MCS	11/6/2009
Scale: 1"=40'	Drawn by: JLH	SHEET 1 OF 2

FILED Dec. 2, 2009
BAKER COUNTY SURVEYOR
SURVEY NO. 9-40-675

FILED Dec. 2, 2009
BAKER COUNTY SURVEYOR
SURVEY NO. 9-40-675