

REPLAT NO. SD 2009-009

BEING A REPLAT OF A PORTION OF BLOCK 17 AND A PORTION OF PLUM STREET IN THE VACATED PORTION OF FAULL'S ADDITION TO BAKER CITY, SITUATED IN THE NW1/4NE1/4 SECTION 16, T.9S., R.40E., W.M., CITY OF BAKER CITY, BAKER COUNTY, OREGON SURVEY COMPLETED MAY 21, 2009

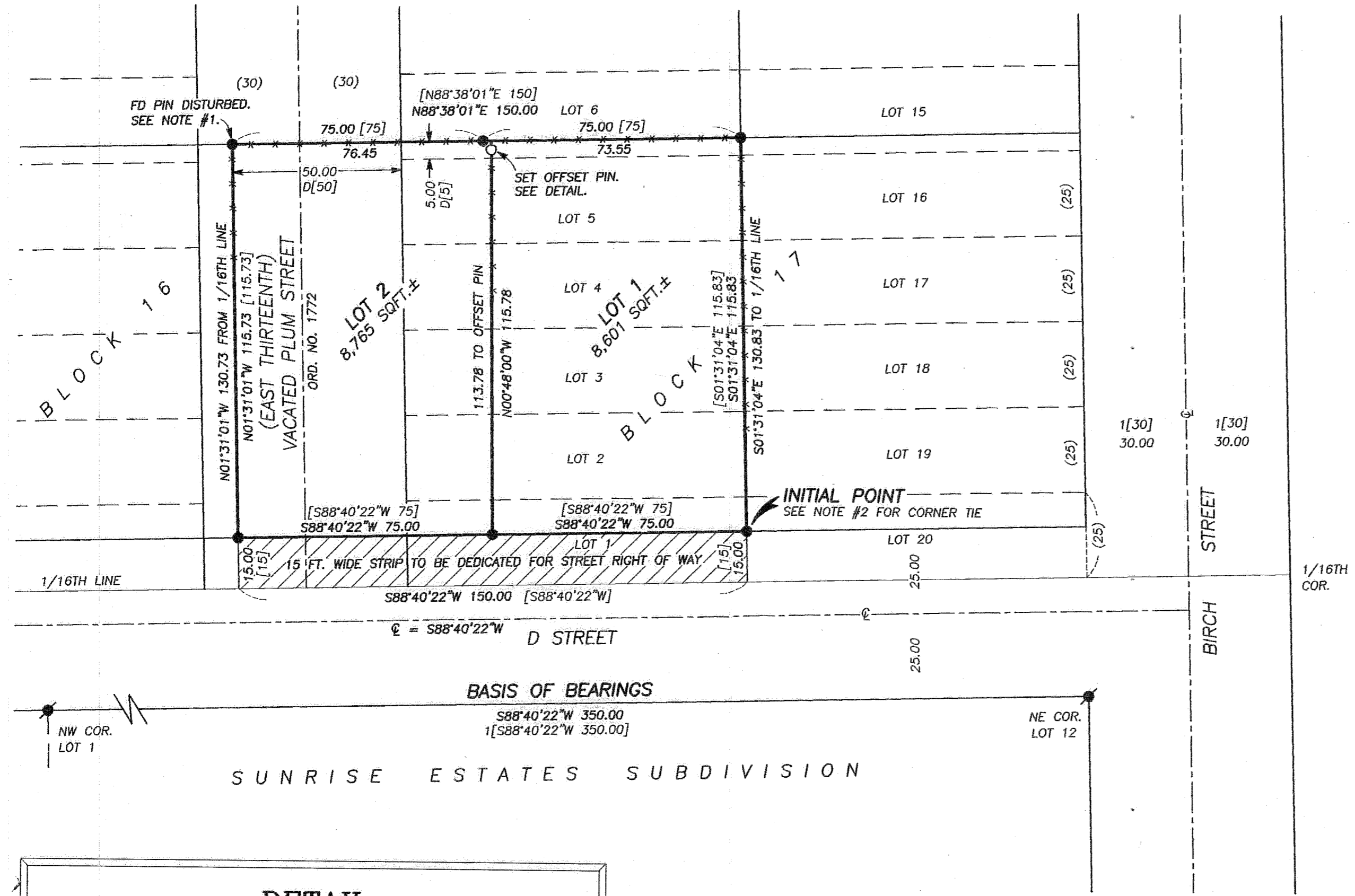


BASIS OF BEARINGS

PLAT OF SUNRISE ESTATES SUBDIVISION AS SHOWN

LEGEND

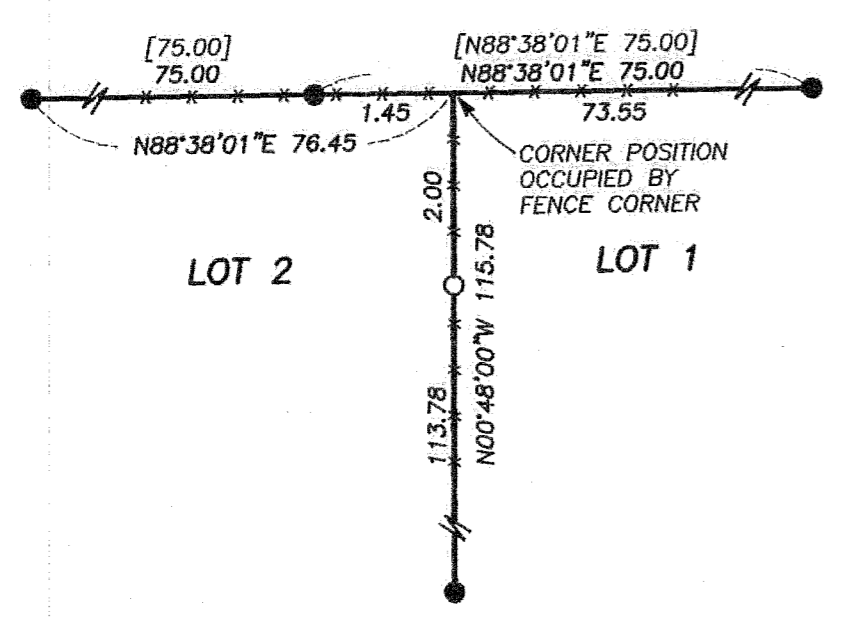
- FOUND 1/2" IRON PIN WITH ATTACHED YELLOW PLASTIC CAP MARKED "RPE 2808" FROM SURVEY NO. 9-40-104BC
- FOUND 5/8" IRON PIN WITH ATTACHED YELLOW PLASTIC CAP MARKED "HANLEY ENGR. PLS 1206" FROM SUNRISE ESTATES SUBDIVISION
- SET 5/8"x30" IRON PIN WITH ATTACHED YELLOW PLASTIC CAP MARKED "BENCHMARK SURVEYING"
- D [] DEED RECORD BEARING AND DISTANCE
- () RECORD BEARING AND DISTANCE FROM THE PLAT FAULL'S ADDITION TO BAKER CITY
- [] RECORD BEARING AND DISTANCE FROM SURVEY NO. 9-40-104BC
- 1 [] RECORD BEARING AND DISTANCE FROM THE PLAT OF SUNRISE ESTATES SUBDIVISION
- X-X FENCE LINE



SUNRISE ESTATES SUBDIVISION

DETAIL

SCALE: 1"=2'



REGISTERED PROFESSIONAL LAND SURVEYOR

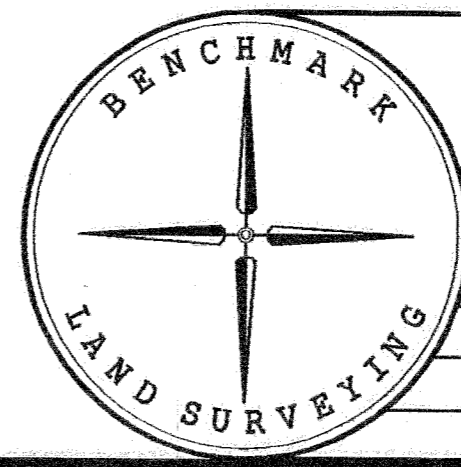
Jason L. Hatfield

OREGON NOVEMBER 30, 2007 JASON L. HATFIELD #69454

EXPIRES: 6/30/2011

I DO HEREBY CERTIFY THAT THIS IS A TRUE AND EXACT COPY OF REPLAT NO. SD 2009-009

Jason L. Hatfield
BENCHMARK LAND SURVEYING



BENCHMARK LAND SURVEYING
217 N. CANYON BLVD. JOHN DAY, OREGON
2101 MAIN STREET, STE 223 BAKER CITY, OREGON
541-575-1251 - 800-699-0516

BEING A REPLAT OF A PORTION OF BLOCK 17 AND A PORTION OF PLUM STREET IN THE VACATED PORTION OF FAULL'S ADDITION TO BAKER CITY, SITUATED IN THE NW1/4NE1/4 SECTION 16, T.9S., R.40E., W.M., CITY OF BAKER CITY, BAKER COUNTY, OREGON

SURVEYED FOR	MIKE SULLIVAN	
SURVEYED BY	JLH & MCS	5/21/2009
Scale: 1"= 30'	Drawn by: JLH	SHEET 1 OF 2

NOTES:

1. FOUND PIN DISTURBED. PIN IS 0.23 FT. SOUTH AND 0.45 FT. EAST OF THE CORNER POSITION, WHICH IS OCCUPIED BY A FENCE CORNER.
2. THE INITIAL POINT IS 1278.76 FT. SOUTH AND 1171.93 FT. EAST OF THE N1/4 COR. SEC. 16, T.9S., R.40E., W.M.