

# BASIS OF BEARING

Record Bearing between Resort Street Intersection monuments at "D" Street and "H" Street as per County Survey 9-40-167

SCALE: 1" = 40'

## REFERENCE MATERIAL

**SURVEYS**  
 Survey Number 9-40-167ABC  
 Survey Number 9-40-197  
 Survey Number 9-40-644  
 Unrecorded Survey by Vernon Z. Jacobson,  
 Baker City Engineer, dated November, 1974

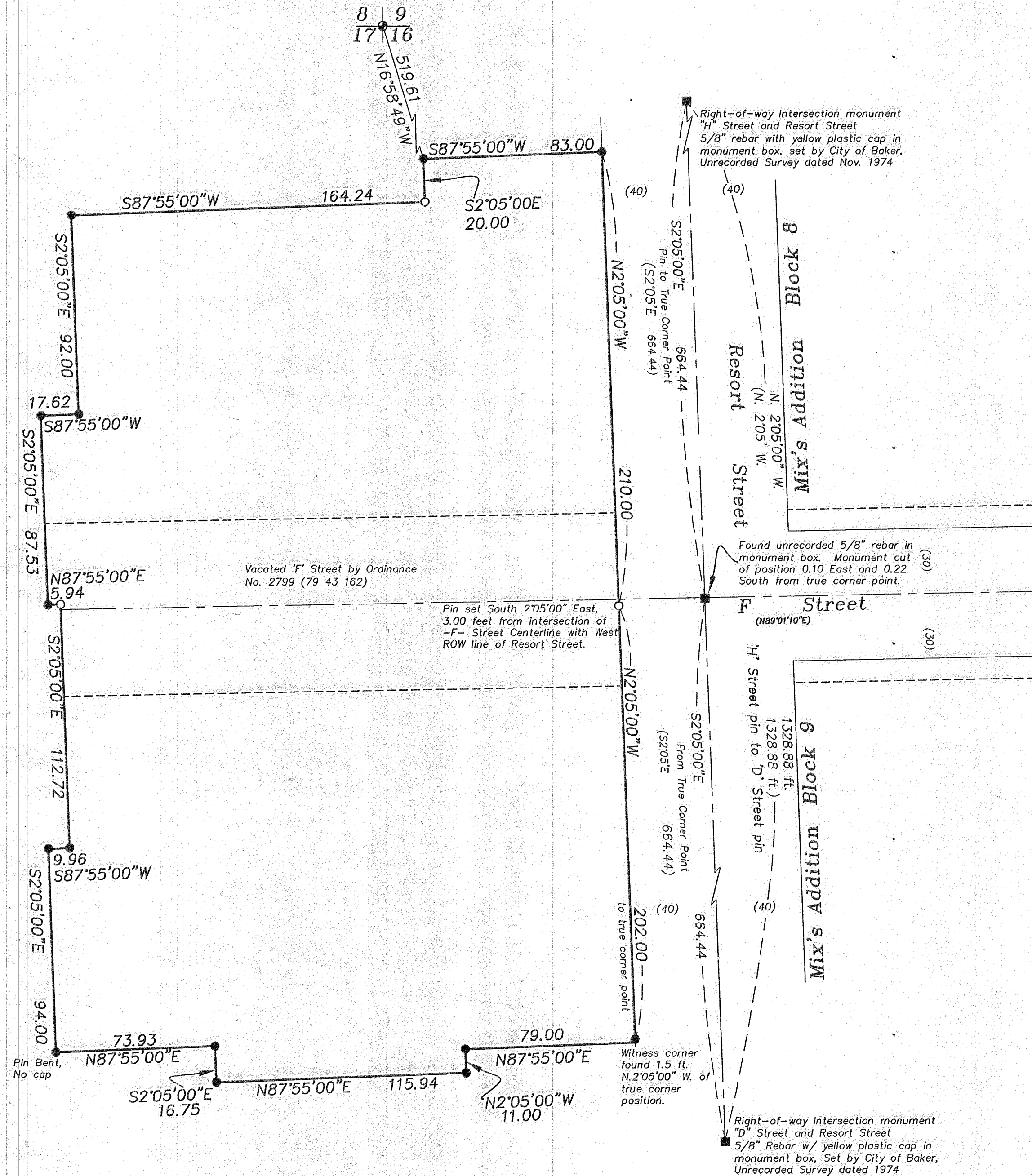
**DEED REFERENCES**  
 B08 23 0098-0106  
 96 42 018  
 81 16 066-070  
 78 31 095  
 79 43 162

## LEGEND

- Found Brass Cap, set 2" below ground
- Found 5/8" Iron pin with yellow plastic cap marked "BGB SURVEY MARKER", set by Survey 9-40-644
- Set 5/8" Iron pin with yellow plastic cap marked "BGB SURVEY MARKER"
- Found 5/8" Iron pin in monument box marked as shown in Survey 9-40-167ABC
- Found Unrecorded Iron Pin in Monument Box
- Centerline
- - - Vacated "F" Street
- ( ) Record Measurements as per Survey No 9-40-167ABC

## NARRATIVE

This survey was done at the request of WC Construction. The tract was pinned by Survey Number 9-40-644 in 2008. Pins were removed by construction and required replacement prior to fencing. I find the pins that remain and replace the missing pins as per said survey. At the time of this survey, concrete sidewalk, landscaping and other encroachments shown by the previous survey have been removed. I find no unusual conditions with this survey.



REGISTERED  
 PROFESSIONAL  
 LAND SURVEYOR

*R. G. Robinson*  
 OREGON  
 JULY 17, 1986  
 RICK G. ROBINSON  
 2219

Renewal Date: Dec. 31, 2010

**BAGETT, GRIFFITH & BLACKMAN**  
 2006 Adams Avenue, LaGrande, Oregon  
 Map of Survey

A tract of land situated in the NE 1/4 of the NE 1/4 of Section 17, and the NW 1/4 of the NW 1/4 of Section 16, Township 9 South, Range 40 East of the Willamette Meridian, Baker County, Oregon

SURVEYED FOR	W.C. Construction
SURVEYED BY	R. G. R.
Scale: 1" = 40'	Drawn by: J. S. H. June 2009

FILED June 10, 2009  
 BAKER COUNTY SURVEYOR  
 SURVEY NO. 9-40-670