

# REPLAT NO. P2009-006

BEING A REPLAT OF PARCELS 1 AND 3 OF PARTITION NO. P1990-009 AND A PORTION OF PARCEL 2 OF PARTITION NO. P1998-013 SITUATED IN THE NE1/4SW1/4 OF SECTION 17, T.9S., R.40E., W.M., CITY OF BAKER CITY, BAKER COUNTY, OREGON SURVEY COMPLETED FEBRUARY 3, 2009

## LEGEND

- FOUND A 1/2" IRON PIPE SET BELOW GROUND IN AN 8" DIAMETER CAST IRON CITY MONUMENT CASE UNLESS OTHERWISE SHOWN.
- FOUND 5/8" IRON PIN WITH ATTACHED YELLOW PLASTIC CAP MARKED "HANLEY ENGR. PLS 1206" FROM RECORD LAND PARTITION PLAT NO. 1990-009
- FOUND 5/8" IRON PIN WITH ATTACHED YELLOW PLASTIC CAP FROM RECORD SURVEY NO. 9-40-552
- FOUND 5/8" IRON PIN - NO CAP FROM RECORD LAND PARTITION PLAT NO. 1990-009
- SET 5/8"x30" IRON PIN WITH ATTACHED YELLOW PLASTIC CAP MARKED "BENCHMARK SURVEYING"
- [ ] RECORD BEARING AND DISTANCE FROM PARTITION PLAT NO. 1990-009
- 1[ ] RECORD BEARING AND DISTANCE FROM PARTITION PLAT NO. 1998-013
- 2[ ] RECORD BEARING AND DISTANCE FROM SURVEY NO. 9-40-552
- U.P.R.R. UNION PACIFIC RAILROAD



## BASIS OF BEARINGS

RECORD LAND PARTITION PLAT NO. 1990-009 AS SHOWN

### NOTES:

1. PIN WAS FOUND DISTURBED POSSIBLY DUE TO LANDSCAPING ACTIVITY. PIN IS 0.22' SOUTH & 0.19' WEST OF RECORD POSITION
2. PIN WAS FOUND DISTURBED POSSIBLY DUE TO LANDSCAPING ACTIVITY. PIN IS 0.25' NORTH & 0.65' EAST OF RECORD POSITION
3. PIN WAS FOUND BENT POSSIBLY DUE TO CONSTRUCTION ACTIVITY. PIN IS 0.19' SOUTH & 0.07' EAST OF RECORD POSITION
4. PIN WAS FOUND DISTURBED BY FENCE BUILDING ACTIVITY. PIN IS 0.26' SOUTH & 0.30' WEST OF RECORD POSITION

### CURVE TABLE

CURVE	RADIUS	DELTA	LENGTH	LONG CHORD BEARING-DIST.
C1	1656.40	5°01'18"	145.17	S20°09'37"E 145.13
C2	316.20	8°28'24"	46.76	S13°24'46"E 46.72
C3	755.20	12°01'46"	158.56	S03°09'41"E 158.26
C4	292.20	12°52'40"	65.67	S09°17'32"W 65.54
C5	316.20	6°46'26"	37.38	S14°15'45"E 37.36
C6	316.20	1°41'58"	9.38	S10°01'33"E 9.38

REGISTERED PROFESSIONAL LAND SURVEYOR

*Jason L. Hatfield*

OREGON  
NOVEMBER 30, 2007  
JASON L. HATFIELD  
#69454

EXPIRES: 6/30/2009

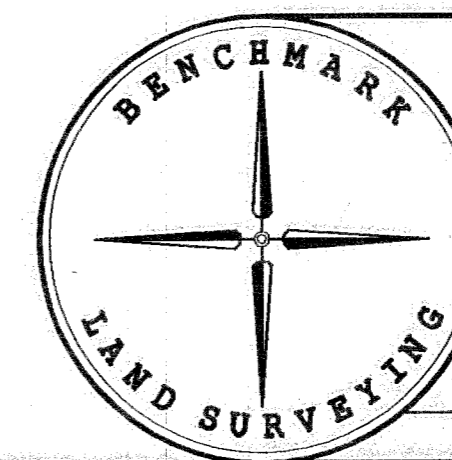
I DO HEREBY CERTIFY THAT THIS IS A TRUE AND EXACT COPY OF REPLAT NO. P2009-006

*Jason L. Hatfield*  
JASON L. HATFIELD, PLS  
BENCHMARK LAND SURVEYING

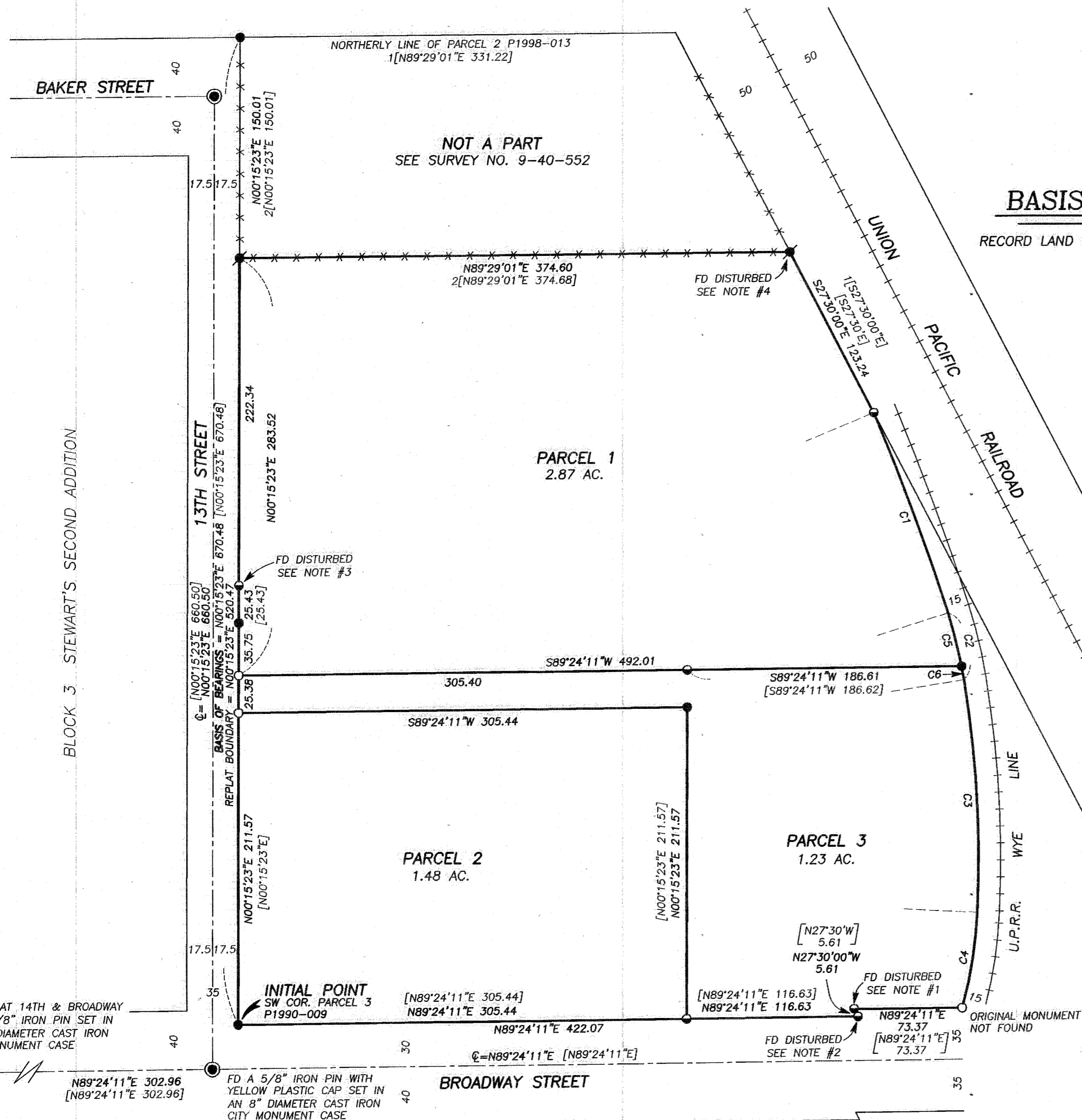
BENCHMARK LAND SURVEYING  
217 N. CANYON BLVD. JOHN DAY, OREGON  
2101 MAIN STREET, STE 223 BAKER CITY, OREGON  
541-575-1251 ~ 800-699-0516

REPLAT OF PARCELS 1 AND 3 OF PARTITION NO. P1990-009 AND A PORTION OF PARCEL 2 OF PARTITION NO. P1998-013 SITUATED IN THE NE1/4SW1/4 OF SECTION 17, T.9S., R.40E., W.M., CITY OF BAKER CITY, BAKER COUNTY, OREGON

SURVEYED FOR	ELLINGSON LUMBER COMPANY	
SURVEYED BY	JLH & MCS	2/3/2009
Scale: 1" = 60'	Drawn by: JLH	SHEET 1 OF 2



FILED June 9, 2009  
BAKER COUNTY SURVEYOR  
SURVEY NO. 9-40-669



MON AT 14TH & BROADWAY  
FD A 5/8" IRON PIN SET IN AN 8" DIAMETER CAST IRON CITY MONUMENT CASE

BLOCK 3 STEWART'S SECOND ADDITION

INITIAL POINT  
SW COR. PARCEL 3  
P1990-009

ORIGINAL MONUMENT NOT FOUND