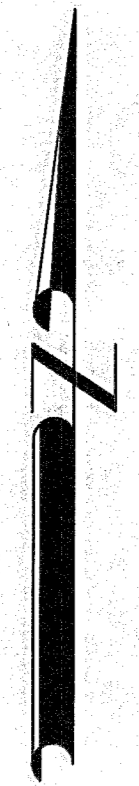


LAND PARTITION PLAT NO. 2009-003

A PARTITION OF TRACT 5 OF BAKER INDUSTRY AND RESOURCES CORPORATION SUBDIVISION
 SITUATED IN THE SE1/4SE1/4 SECTION 20, T.9S., R.40E., W.M.;
 CITY OF BAKER CITY, BAKER COUNTY, OREGON
 SURVEY COMPLETED JANUARY 16, 2009

B09 06 0187

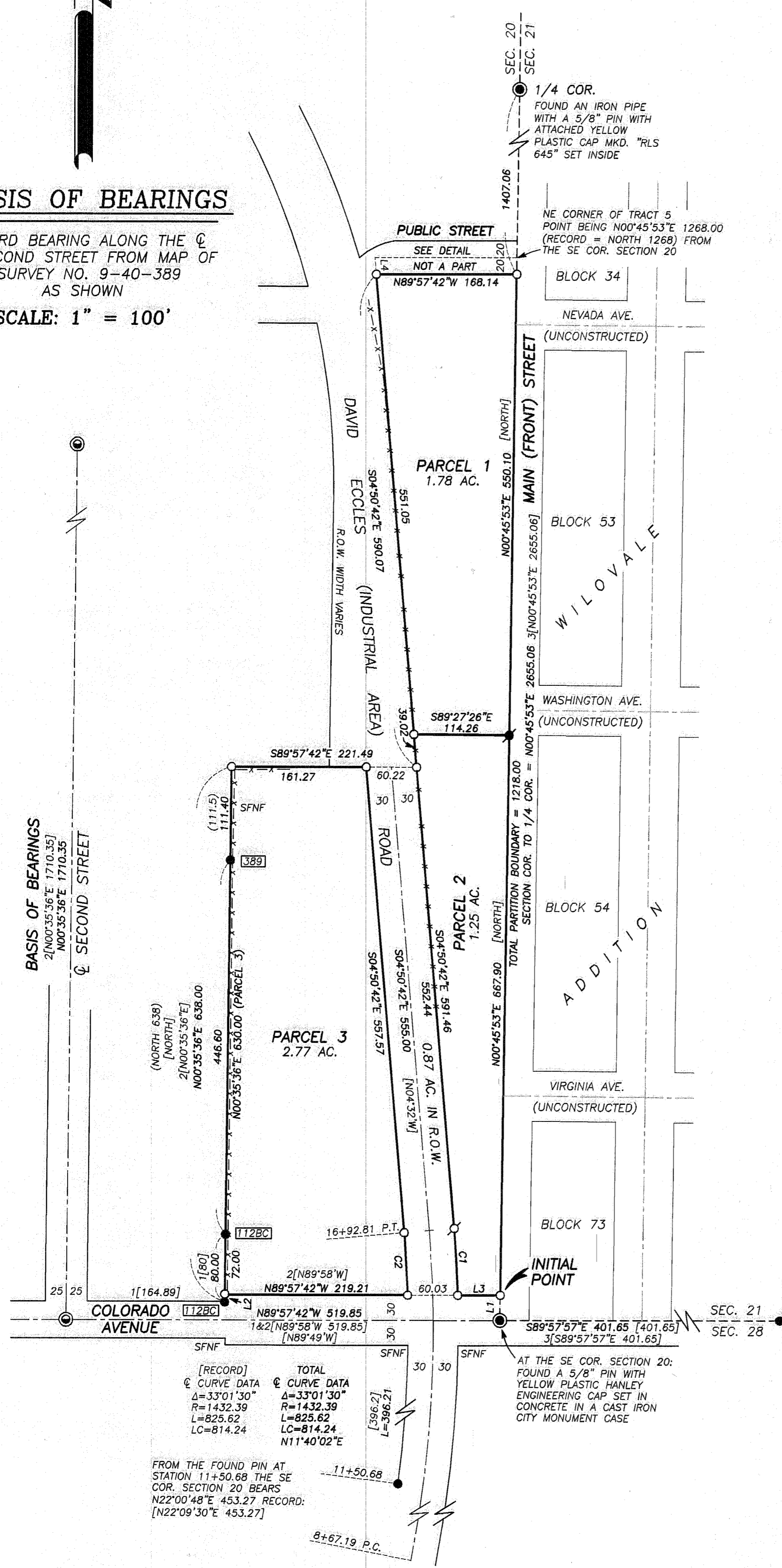


BASIS OF BEARINGS

RECORD BEARING ALONG THE \hat{C} OF SECOND STREET FROM MAP OF SURVEY NO. 9-40-389 AS SHOWN

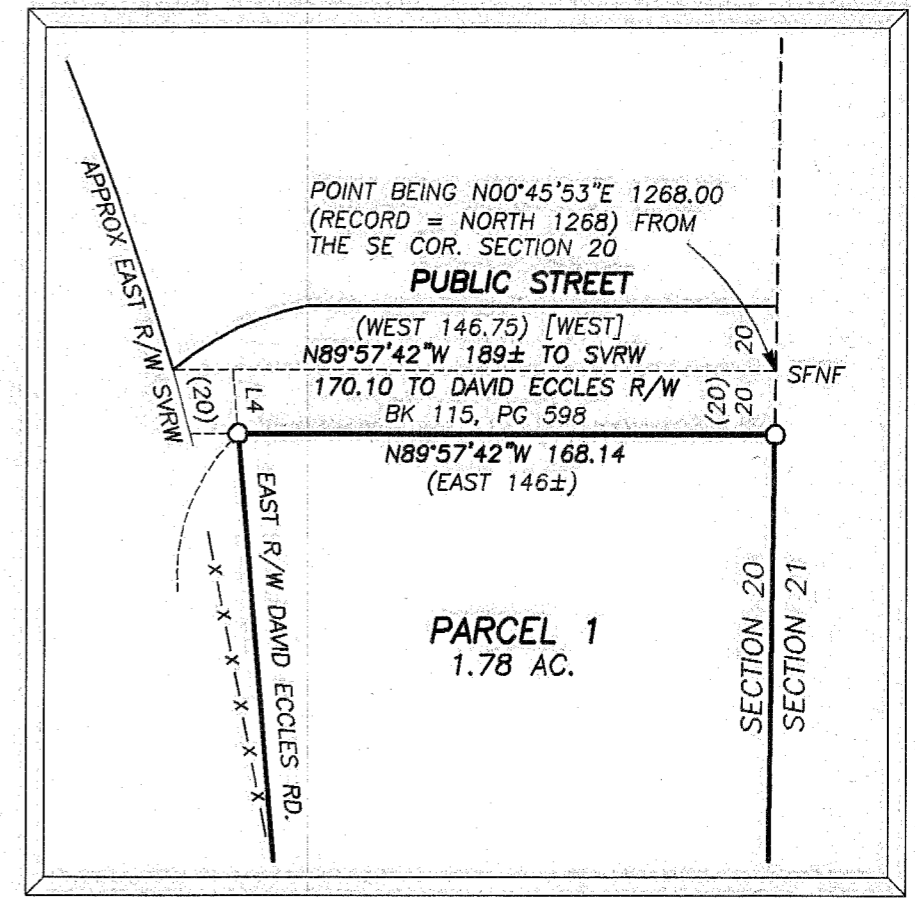
SCALE: 1" = 100'

BASIS OF BEARINGS
 2[N00°35'36"E 1710.35]
 2[N00°35'36"E 1710.35]



DETAIL

SCALE: 1"=60'



LEGEND

- FOUND SECTION CORNER OR 1/4 CORNER MONUMENT AS NOTED
- FOUND A 1/2" PIN BELOW GROUND IN A CAST IRON CITY MONUMENT CASE
- FOUND 5/8" IRON PIN WITH ATTACHED YELLOW PLASTIC CAP MARKED "HANLEY ENGR. PLS 1206" FROM BAKER INDUSTRY & RESOURCES CORPORATION SUBDIVISION PLAT UNLESS OTHERWISE SHOWN
- FOUND 5/8" IRON PIN WITH ATTACHED YELLOW PLASTIC CAP MARKED BGB SURVEY MARKER FROM RECORD SURVEY NO. 9-40-661
- ⊗ SET 1/4" X 1/2" MAG NAIL IN CONCRETE SLAB
- SET 5/8"X30" IRON PIN WITH ATTACHED YELLOW PLASTIC CAP MARKED BGB SURVEY MARKER
- () DEED RECORD BEARING AND DISTANCE
- [] RECORD BEARING AND DISTANCE FROM PLAT OF BAKER INDUSTRY AND RESOURCES CORPORATION SUBDIVISION-PHASE 1 AND 3
- 1[] RECORD DISTANCE FROM SURVEY NO. 9-40-112BC
- 2[] RECORD BEARING AND DISTANCE FROM SURVEY NO. 9-40-389
- 3[] RECORD BEARING AND DISTANCE FROM SURVEY NO. 9-40-661
- FOUND MONUMENT FROM RECORDED SURVEY NO. 9-40-□
- X-X CHAIN-LINK FENCE
- SFNF MONUMENT SEARCHED FOR, NOT FOUND
- SVRW SUMPTER VALLEY RAILWAY COMPANY

LINE TABLE

LINE	BEARING	DIST.
L1	N00°45'53"E	30.00
L2	N00°35'36"E	8.00
L3	S89°57'42"E	50.81
L4	S04°50'42"E	20.07

CURVE TABLE

CURVE	RADIUS	DELTA	LENGTH	LONG CHORD BEARING-DIST.
C1	1462.39	3°07'18"	79.68	S03°17'03"E 79.67
C2	1402.39	3°02'46"	74.56	S03°19'19"E 74.55

REGISTERED PROFESSIONAL LAND SURVEYOR

Jason L Hatfield
 OREGON
 NOVEMBER 30, 2007
 JASON L. HATFIELD
 #69454
 EXPIRES: 6/30/2009

I DO HEREBY CERTIFY THAT THIS IS A TRUE AND EXACT COPY OF LAND PARTITION PLAT NO. 2009-003

Jason L Hatfield
 BAGGETT, GRIFFITH AND BLACKMAN
 PROFESSIONAL LAND SURVEYORS
 217 N. CANYON BLVD.
 JOHN DAY, OREGON 97845
 1-800-699-0516

B09 06 0188

B09 06 0189