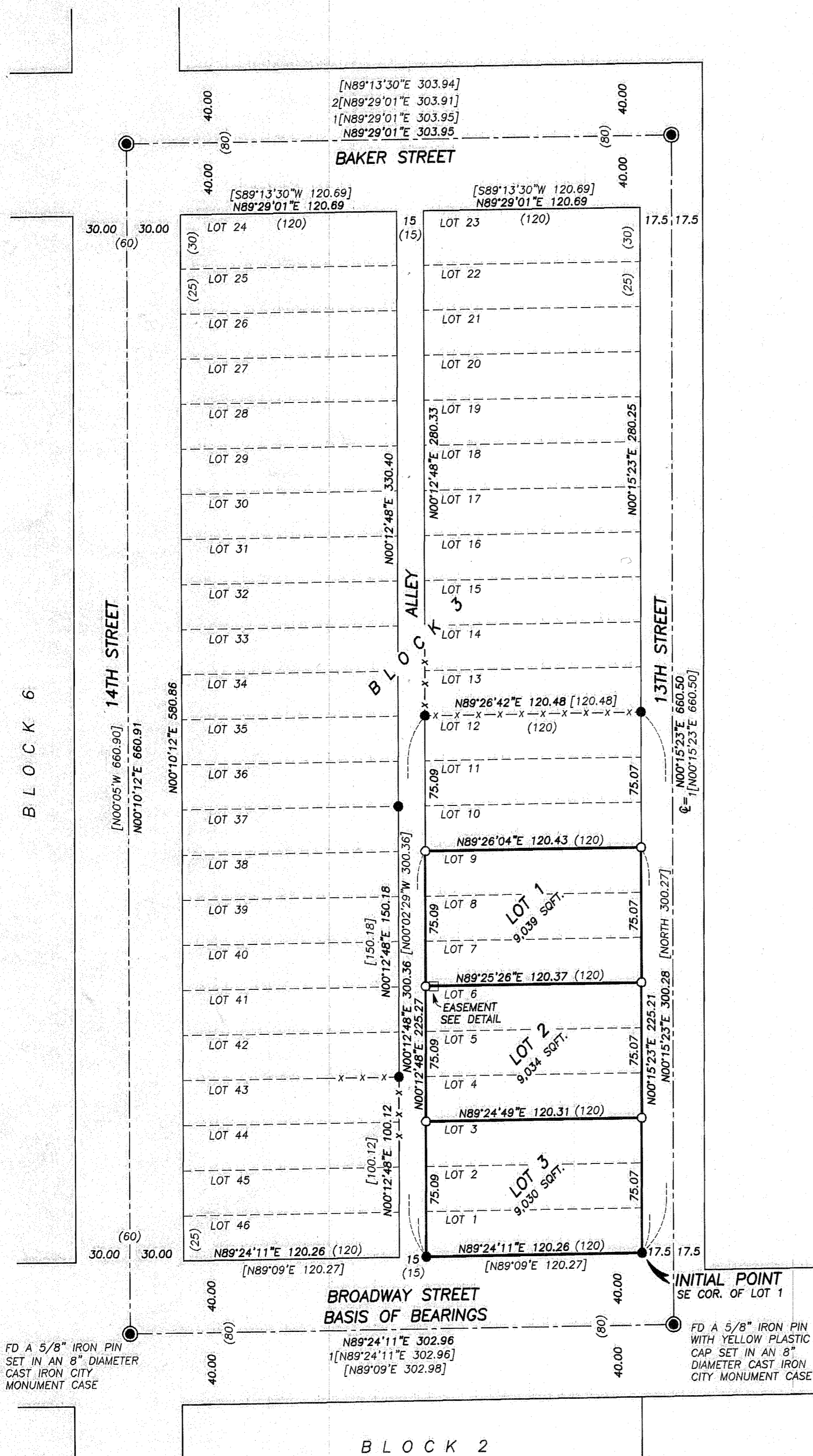


# REPLAT NO. SD 2009-001

BEING A REPLAT OF LOTS 1 THROUGH 9 OF BLOCK 3, STEWART'S SECOND ADDITION TO BAKER CITY  
SITUATED IN THE NW1/4SW1/4 OF SECTION 17, T.9S., R.40E., W.M.,  
CITY OF BAKER CITY, BAKER COUNTY, OREGON  
SURVEY COMPLETED FEBRUARY 3, 2009

B09 06 0181



## BASIS OF BEARINGS

RECORD LAND PARTITION PLAT NO. 1999-009  
AS SHOWN

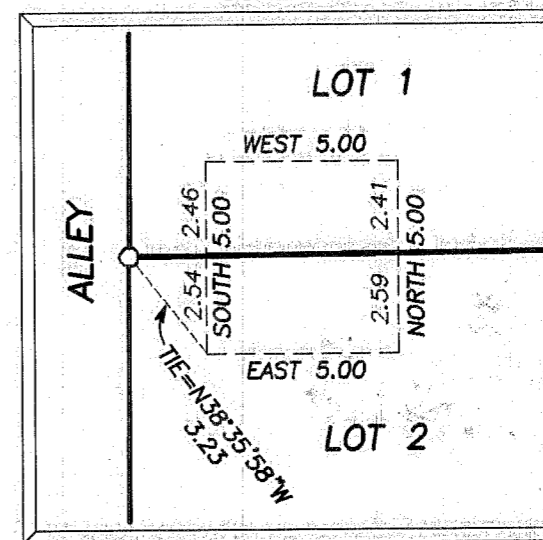
## LEGEND

- FOUND A 1/2" IRON PIPE SET BELOW GROUND IN AN 8" DIAMETER CAST IRON CITY MONUMENT CASE UNLESS OTHERWISE NOTED.
- FOUND 5/8" IRON PIN WITH ATTACHED YELLOW PLASTIC CAP MARKED "HANLEY ENGR. PLS 1206" FROM RECORD MAP OF SURVEY NO. 9-40-479
- SET 5/8"x30" IRON PIN WITH ATTACHED YELLOW PLASTIC CAP MARKED "BENCHMARK SURVEYING"
- ( ) RECORD BEARING AND DISTANCE FROM THE PLAT OF STEWART'S SECOND ADDITION TO BAKER CITY
- [ ] RECORD BEARING AND DISTANCE FROM RECORD MAP OF SURVEY NO. 9-40-479
- 1[ ] RECORD BEARING AND DISTANCE FROM RECORD LAND PARTITION PLAT NO. 1990-009
- 2[ ] RECORD BEARING AND DISTANCE FROM RECORD LAND PARTITION PLAT NO. 2002-02
- x-x EXISTING FENCE

## DETAIL

PRIVATE UTILITY EASEMENT  
BOOK 99 31 069

SCALE: 1"=5'



B09 06 0182

B09 06 0183

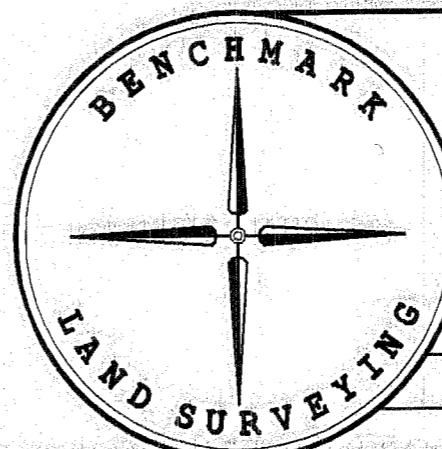
I DO HEREBY CERTIFY THAT THIS IS A TRUE AND EXACT COPY OF REPLAT NO. SD 2009-001

*Jason L. Hatfield*  
JASON L. HATFIELD, PLS  
BENCHMARK LAND SURVEYING

REGISTERED  
PROFESSIONAL  
LAND SURVEYOR

*Jason L. Hatfield*  
OREGON  
NOVEMBER 30, 2007  
JASON L. HATFIELD  
#69454

EXPIRES: 6/30/2009



BENCHMARK LAND SURVEYING  
217 N. CANYON BLVD. JOHN DAY, OREGON  
2101 MAIN STREET, STE 223 BAKER CITY, OREGON  
541-575-1251 ~ 800-699-0516

REPLAT OF LOTS 1 THROUGH 9 OF BLOCK 3,  
STEWART'S SECOND ADDITION TO BAKER CITY  
SITUATED IN THE NW1/4SW1/4 OF SECTION 17, T.9S., R.40E., W.M.,  
CITY OF BAKER CITY, BAKER COUNTY, OREGON

SURVEYED FOR	ELLINGSON LUMBER COMPANY	
SURVEYED BY	JLH & MCS	2/3/2009
Scale: 1"= 50'	Drawn by: JLH	SHEET 1 OF 2

FILED Feb. 13, 2009  
BAKER COUNTY SURVEYOR  
SURVEY NO. 9-40-664 SD