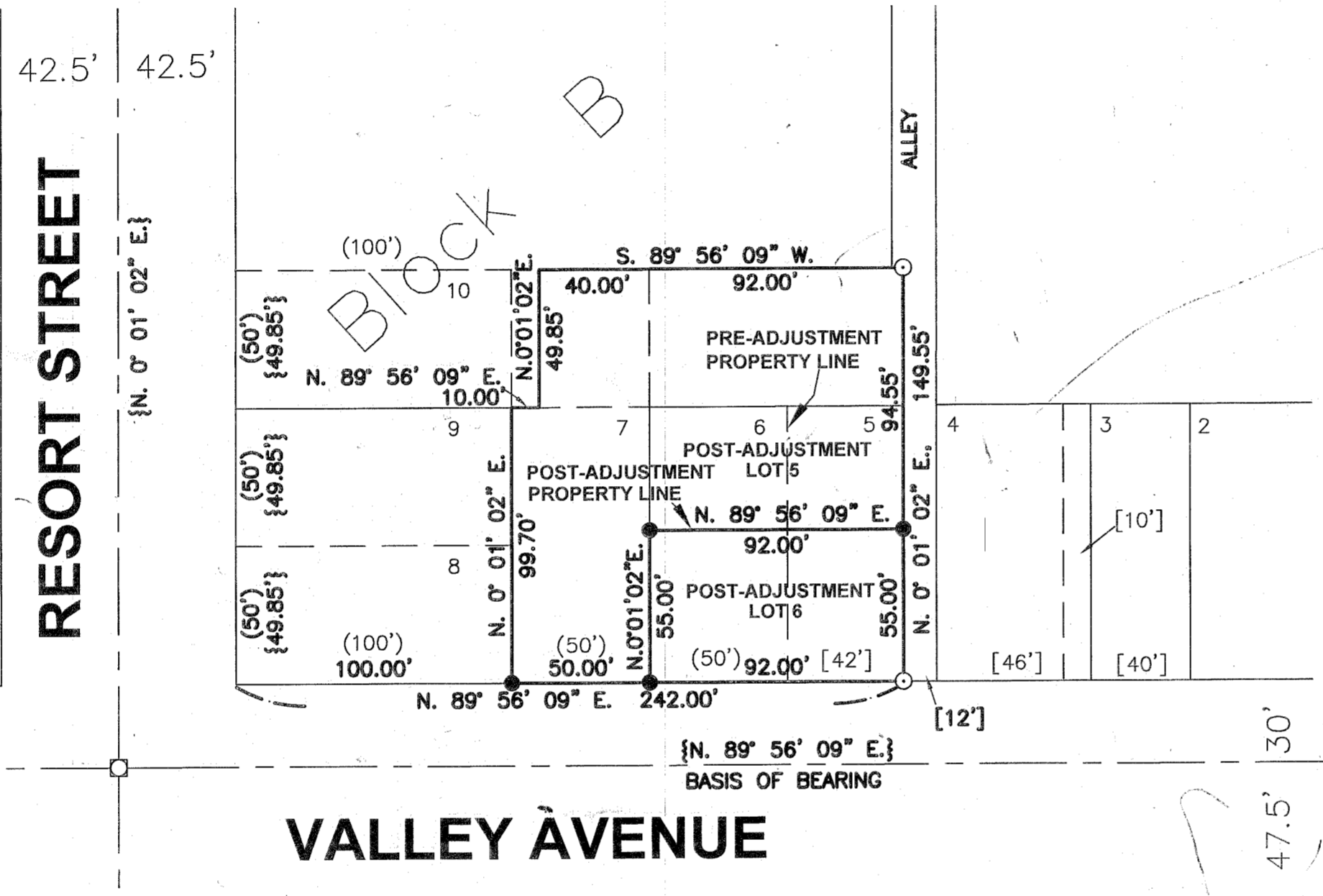
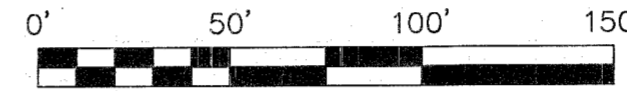


**BASIS OF BEARING**  
 BA. CO. SUR. NO. 9-40-634

SCALE: 1" = 50'



**NARRATIVE**

The purpose of this survey for Jim VanDuyn is to mark upon the ground with proper monumentation the corners of a parcel 55.00' by 92.00' for a lot line adjustment. The Northeast corner and the Southeast corner of a parcel described in Baker County Deed No. B05-29-0209 were recovered this survey. Both monuments are aluminum capped 5/8" rebars set by Anderson-Perry and Associates, recorded in Baker County Survey No. 9-40-634.

**REFERENCES**

- Plat of Fisher's Addition to Baker City
- Baker County Survey No. 9-40-508
- Baker County Survey No. 9-40-634
- Baker County Deed No. B05-29-0209

**LEGEND**

- Set 5/8" x 30" rebar with plastic cap marked "HANLEY ENGR. PLS 1817".
- Found, 5/8" rebar with aluminum cap marked "APA OR2537 WA35140".
- Found, monument in monument box.
- ( ) Record Data Per Fisher's Addition Plat
- [ ] Record Data Per Ba. Co. Surv. No. 9-40-508.
- { } Record Data Per Ba. Co. Surv. No. 9-40-634.

**MAP OF SURVEY  
 FOR LOT LINE ADJUSTMENT  
 IN BLOCK B,**

**FISHER'S ADDITION TO BAKER CITY  
 BAKER COUNTY, OREGON**

Surveyed October 23 and 26, 2007

for Jim VanDuyn

Scale: 1" = 50'

FILED May 20, 2008  
 BAKER COUNTY SURVEYOR  
 SURVEY NO. 9-40-651

REGISTERED  
 PROFESSIONAL  
 LAND SURVEYOR

*Thomas J. Hanley*  
 OREGON  
 JULY 13, 1979  
 THOMAS J. HANLEY  
 1817

Renews June 30, 2009

**HANLEY ENGINEERING, INC.**

P.O. BOX 701, 2043 MAIN STREET, BAKER CITY, OREGON 97814 (541) 523-3803