

B07 27 0280

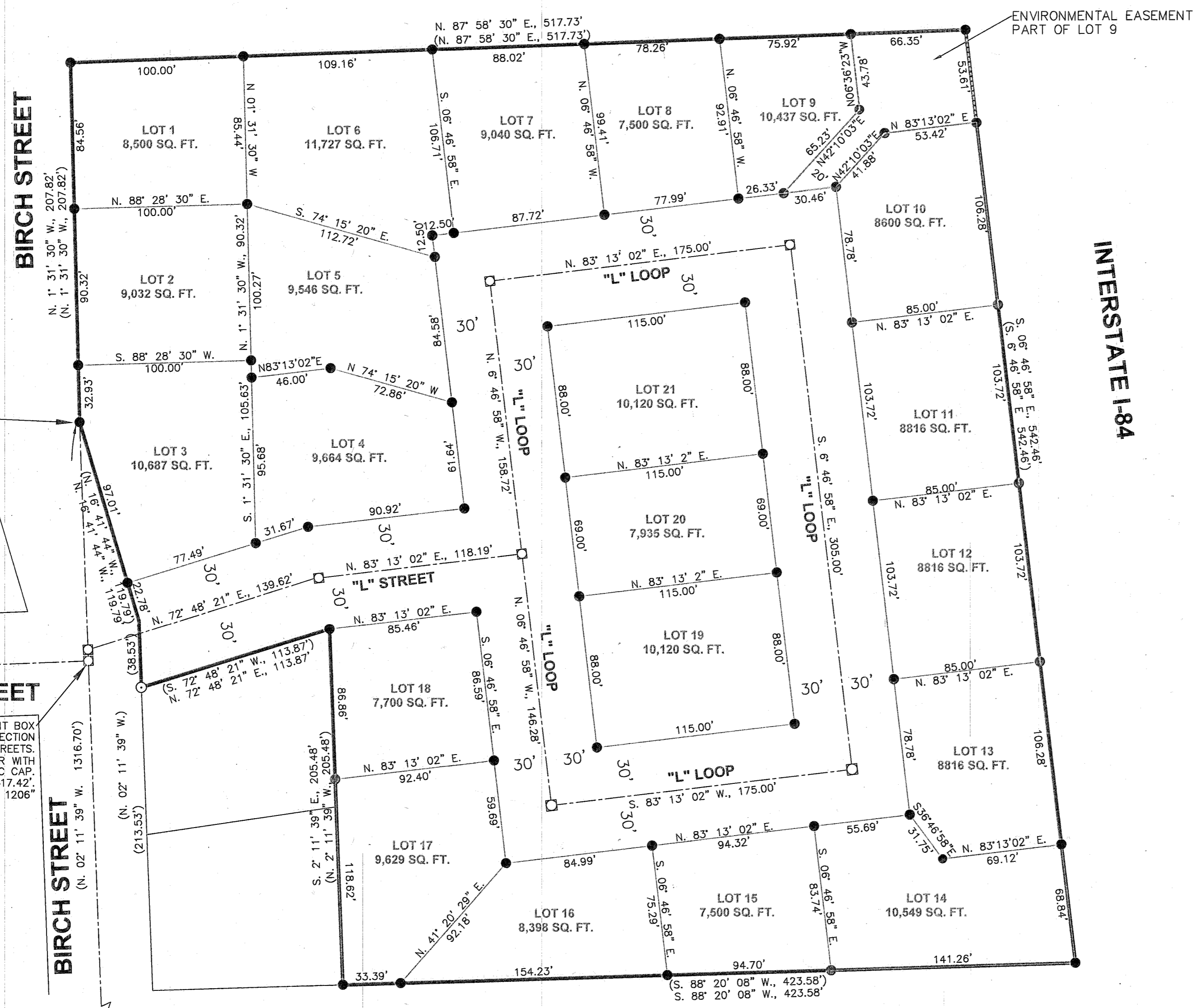
B07 27 0281

B07 27 0282

BIRCH ESTATES SUBDIVISION

SD 2007- 003

LOCATED IN THE EAST HALF OF THE SOUTH EAST QUARTER
OF SECTION 9, TOWNSHIP 9 SOUTH, RANGE 40 EAST, WILLAMETTE MERIDIAN



P.O.B.
NW CORNER
SE 1/4 SE 1/4
SECTION 9

EXISTING MONUMENT BOX
AT THE INTERSECTION
OF "L" & BIRCH STREETS.
5/8" REBAR WITH
YELLOW PLASTIC CAP.
ELEV. = 3417.42'.
MARKED "HANLEY ENGR PLS 1206"

**FOUND 5/8" REBAR
IN MONUMENT BOX
SW CORNER SE 1/4
SE 1/4 SECTION 9**

ENVIRONMENTAL EASEMENT
PART OF LOT 9

INTERSTATE 184

BASIS OF BEARING
BAKER COUNTY
PARTITION PLAT 1996-012
WEST LINE SE 1/4 SE 1/4
OF SECTION 9 BEARS
N. 02° 11' 39" W.

SCALE: 1" = 50'

LEGEND

- Set 5/8" x 30" rebar with plastic cap marked "HANLEY ENGR. PLS 1817".
- Found 5/8" rebar with plastic cap marked "HANLEY ENGR. PLS 1206" set by Partition Plat 1996-012
- Set 5/8" X 30" rebar with yellow plastic cap marked "HANLEY ENGR. PLS 1817" in monument box, set per this survey, or as noted
- () Baker County partition plat 1996-012

I, Thomas J. Hanley, hereby certify that this is an exact duplicate copy of the Birch Estates plat as submitted to the Baker County Clerk for recording.

Thomas J. Hanley
Thomas J. Hanley

HANLEY ENGINEERING, INC.
P.O. BOX 701, 2043 MAIN STREET, BAKER CITY, OREGON 97814 (541) 523-3803

REGISTERED
PROFESSIONAL
LAND SURVEYOR

Thomas J. Hanley
OREGON
JULY 13, 1979
THOMAS J. HANLEY
1817

FILED July 3, 2007
BAKER COUNTY SURVEYOR
SURVEY NO. 9-40-635SD Renews June 30, 2007