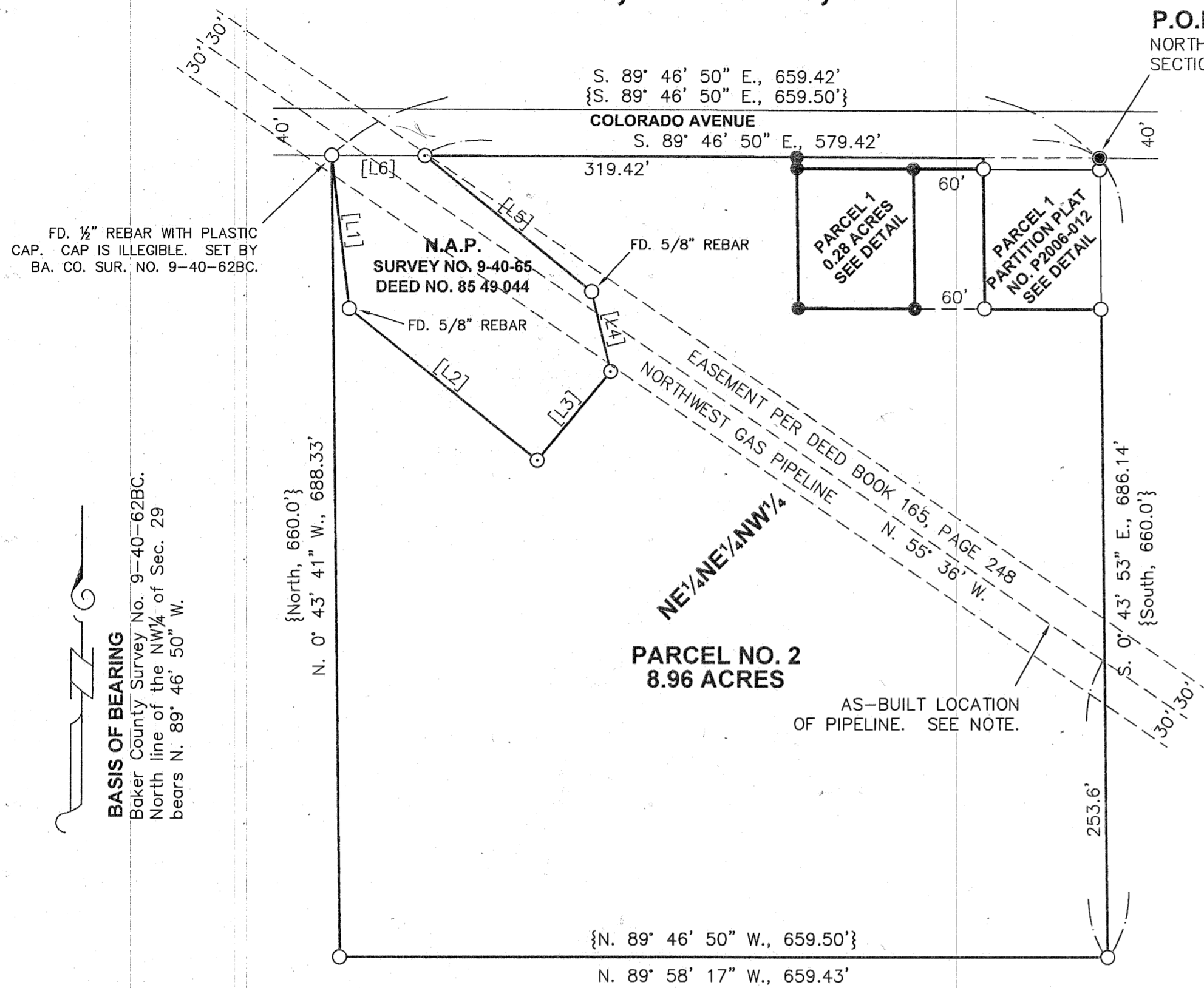


**NE¹/₄NE¹/₄NW¹/₄, SECTION 29,
T. 9 S., R. 40 E., W.M.**



SCALE: 1" = 100'

REFERENCES

- Robert Leep map titled "Sketch Map North Boundary N/E 1/4, Sec. 32", dated May, 1935.
- Baker County Survey No. 9-40-1.
- Baker County Survey No. 9-40-16.
- Baker County Survey No. 9-40-28.
- Baker County Survey No. 9-40-62BC.
- Baker County Survey No. 9-40-63.
- Baker County Survey No. 9-40-65.
- Baker County Survey No. 9-40-622MP
- Baker County Deed Book 165, Page 248.
- Baker County Deed 75 17 057.
- Baker County Deed 85 49 044.

LEGEND

- Set 5/8" x 30" rebar with plastic cap marked "HANLEY ENGR. PLS 1817".
- Found 5/8" rebar with plastic cap marked "HANLEY ENGR. PLS 1206". Set by Ba. Co. Sur. No. 9-40-65.
- Found 5/8" rebar with plastic cap marked "HANLEY ENGR. PLS 1817". Set by Ba. Co. Sur. No. 9-40-622MP or as noted.
- ⊙ Found brass cap monument as noted.
- ⊙ Found aluminum cap monument as noted.
- () Record GLO Data.
- { } Record Data Per Ba. Co. Surv. No. 9-40-62BC.
- [] Record Data Per Ba. Co. Surv. No. 9-40-65.

HANLEY ENGINEERING, INC.

P.O. BOX 701, 2043 MAIN STREET, BAKER CITY, OREGON 97814 (541) 523-3803

LINE TABLE

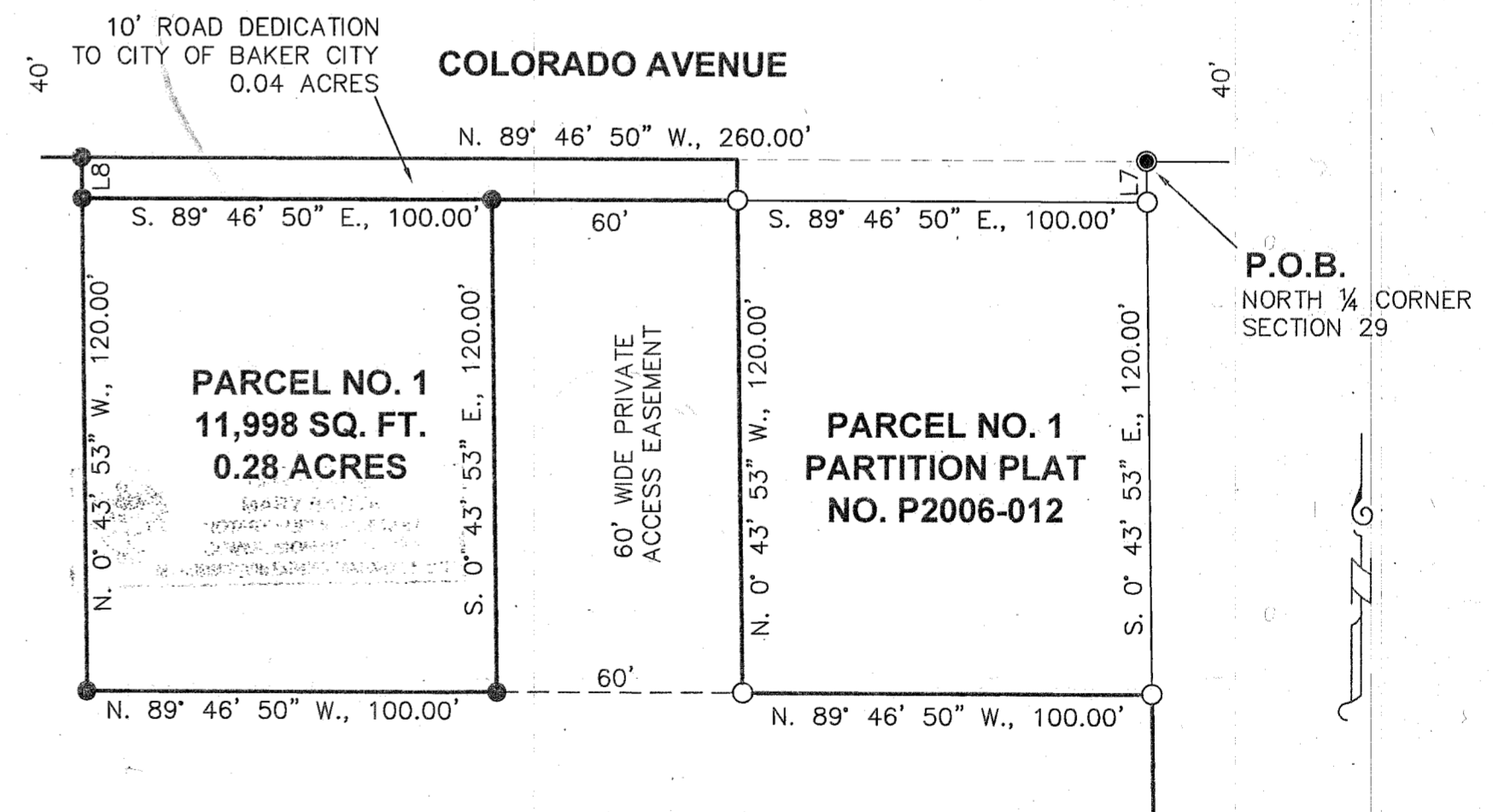
LINE	BEARING	DISTANCE
[L1]	[S. 6° 39' 47" E.]	[132.92']
[L2]	[S. 51° 08' 20" E.]	[207.75']
[L3]	[N. 39° 28' 14" E.]	[98.79']
[L4]	[N. 13° 31' 38" W.]	[70.59']
[L5]	[N. 50° 46' 36" W.]	[185.28']
[L6]	[N. 89° 46' 50" W.]	[80.00']
L7	S. 0° 43' 53" E.	10.00'
L8	S. 0° 43' 53" E.	10.00'

NOTE

The location of the pipeline easement as shown hereon is approximate and should not be used for locating the pipeline on the ground. Jurisdictional one call systems should verify and mark on the ground the pipeline location, superseding the drawing location. Baker County Deed Book 165, Page 248 does not specify a right of way width for the pipeline easement. It is proposed to maintain a 60' easement width (30' on each side of the as-built location of the pipeline) through the subject property.

ROAD DEDICATION

A strip of land 10 feet in width, described as the North 10 feet of the West 160' of the East 260' of the Northeast quarter of the Northeast quarter of the Northwest quarter of Section 29, Township 9 South, Range 40 East, Willamette Meridian, is hereby dedicated to the City of Baker City for road purposes. Land containing 0.04 acres.



DETAIL

SCALE: 1" = 40'

I, Thomas J. Hanley, hereby certify that this is an exact duplicate copy of the partition plat as submitted to the Baker County Clerk for recording.

Thomas J. Hanley
Thomas J. Hanley

FILED June 21, 2007
BAKER COUNTY SURVEYOR
SURVEY NO. 9-40-633MP

REGISTERED PROFESSIONAL LAND SURVEYOR

Thomas J. Hanley
OREGON
JULY 13, 1979
THOMAS J. HANLEY
1817

Renews June 30, 2007