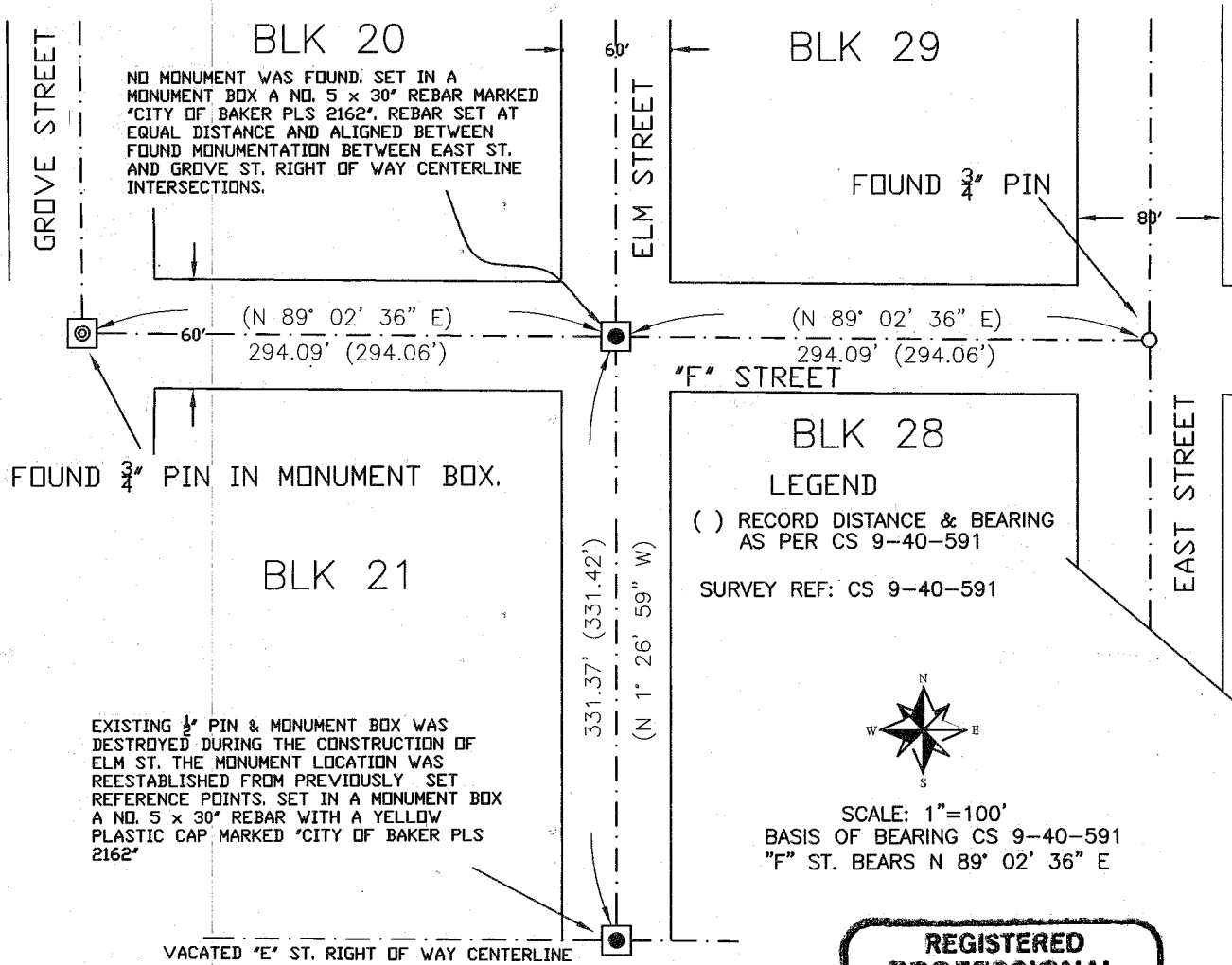


# MIX'S ADDITION TO BAKER CITY, OREGON

SURVEY NARRATIVE: THE PURPOSE OF THIS SURVEY WAS TO ESTABLISH THE RIGHT OF WAY CENTERLINE MONUMENTATION AT THE INTERSECTION OF ELM ST. AND "F" ST. AND TO REESTABLISH THE MONUMENT DESTROYED FROM STREET CONSTRUCTION AT ELM ST. AND VACATED "E" ST.

SURVEYED MAY, 2007



EXISTING 3/4\" PIN & MONUMENT BOX WAS DESTROYED DURING THE CONSTRUCTION OF ELM ST. THE MONUMENT LOCATION WAS REESTABLISHED FROM PREVIOUSLY SET REFERENCE POINTS. SET IN A MONUMENT BOX A NO. 5 x 30\" REBAR WITH A YELLOW PLASTIC CAP MARKED 'CITY OF BAKER PLS 2162'

SCALE: 1\"=100'  
BASIS OF BEARING CS 9-40-591  
"F" ST. BEARS N 89° 02' 36\" E

**REGISTERED  
PROFESSIONAL  
LAND SURVEYOR**

*Gary Van Patten*  
**OREGON  
JULY 26, 1985  
GARY VAN PATTEN  
2162**

*Renews 7-1-08*

LOCATED IN NW1/4NW1/4 SECTION 16 T.9S., R.40E., W.M.

BY: GARY VAN PATTEN, PLS  
CITY OF BAKER CITY SURVEYOR  
1655 1ST STREET  
BAKER CITY, OREGON 97814

FILED *May 6, 2007*  
BAKER COUNTY SURVEYOR  
SURVEY NO. *9-40-632*