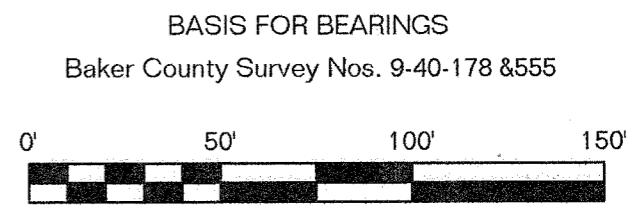
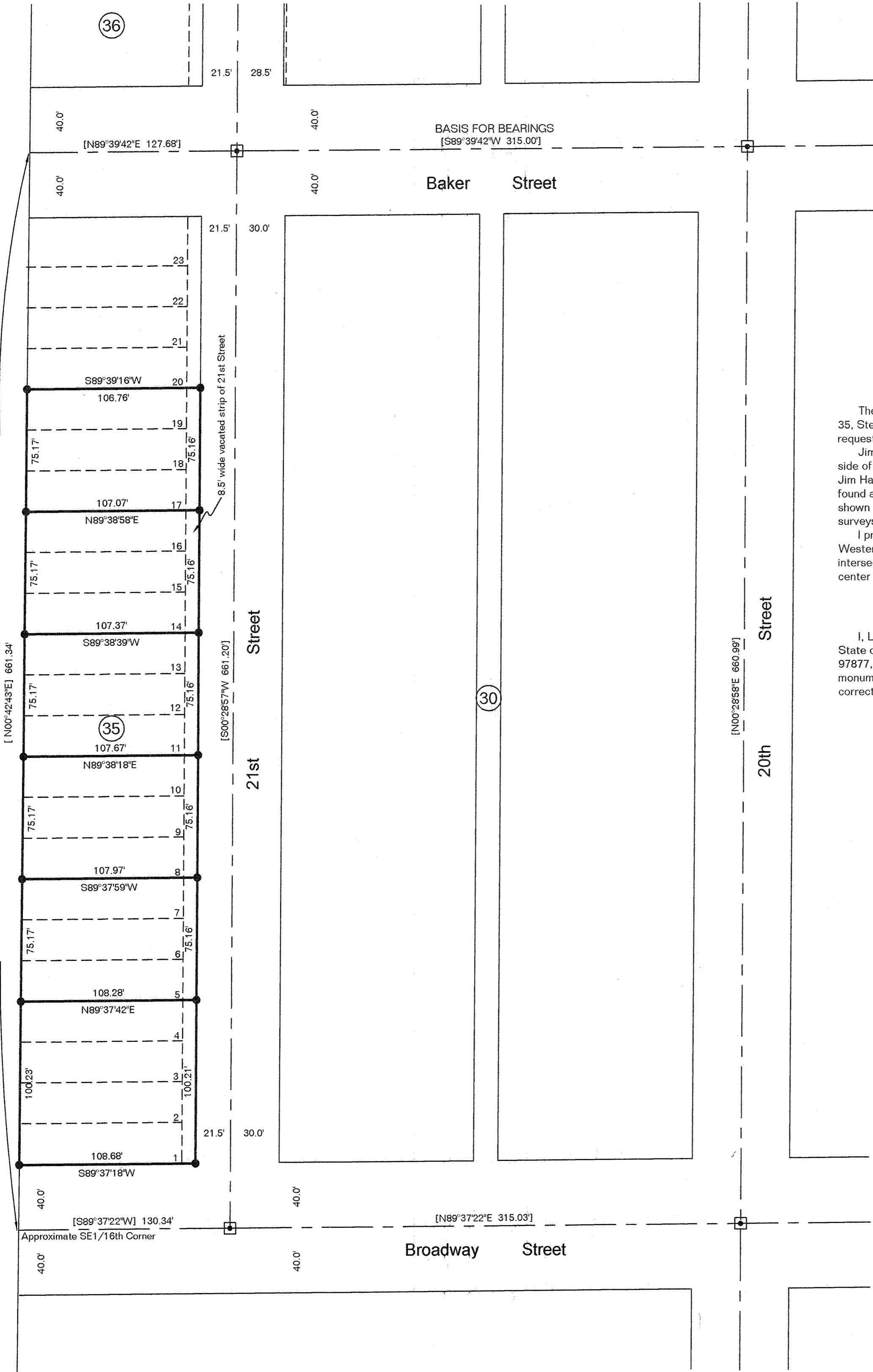


MAP OF SURVEY
 Lots 1-19, Block 35, Stewart's Second Addition, Baker City
 Baker County, Oregon
 NE1/4SE1/4 of Section 18, T9S, R40E, WM



NARRATIVE

The purpose of this survey was to establish several lot corners in Block 35, Stewart's Second Addition to the City of Baker City, Oregon, at the request of Dave Bowers and Pat Braswell.

Jim Hanley has done several surveys in Blocks 29 and 36 on the North side of Baker Street with all based on his earliest Survey No. 9-40-178. Jim Hambleton did Survey No. 9-40-555 on the East side of 21st Street. I found all the bearings and distances between street intersection monuments shown on this plat to compare very well with the calls from the above surveys. I accepted all the record calls for this survey.

I projected the Hanley bearing for the sixteenth line which is the Westerly boundary of Block 35 from the call made by him from the intersection of Baker Street and 21st Street to the intersection of the center of Baker Street with the sixteenth line.

CERTIFICATION

I, Leland Lee Myers, a Professional Land Surveyor registered in the State of Oregon, 587 E Auburn Street, PO Box 99, Sumpter, Oregon 97877, completed this survey on March 15, 2006, by setting the monuments and do hereby certify that the information shown on this map is correct to the best of my knowledge.

REGISTERED
 PROFESSIONAL
 LAND SURVEYOR

Leland Lee Myers

OREGON
 JULY 9, 1965
LELAND LEE MYERS
 699
 Renewal Date 1/1/07

LEGEND

- Block Numbers (30)
- Lot Numbers 12
- Street Monument Boxes □
- Set 30" long No. 5 Rebars with Yellow Plastic Caps marked PLS 699 ●
- Record Bearings & Distances Accepted by this Survey [N89°52'35"E 456.23']
- Unmonumented Lot Lines ---

FILED MAY 10, 2006
 BAKER COUNTY SURVEYOR
 SURVEY No. 9-40-618