

POLLMAN BUILDING CONDOMINIUMS

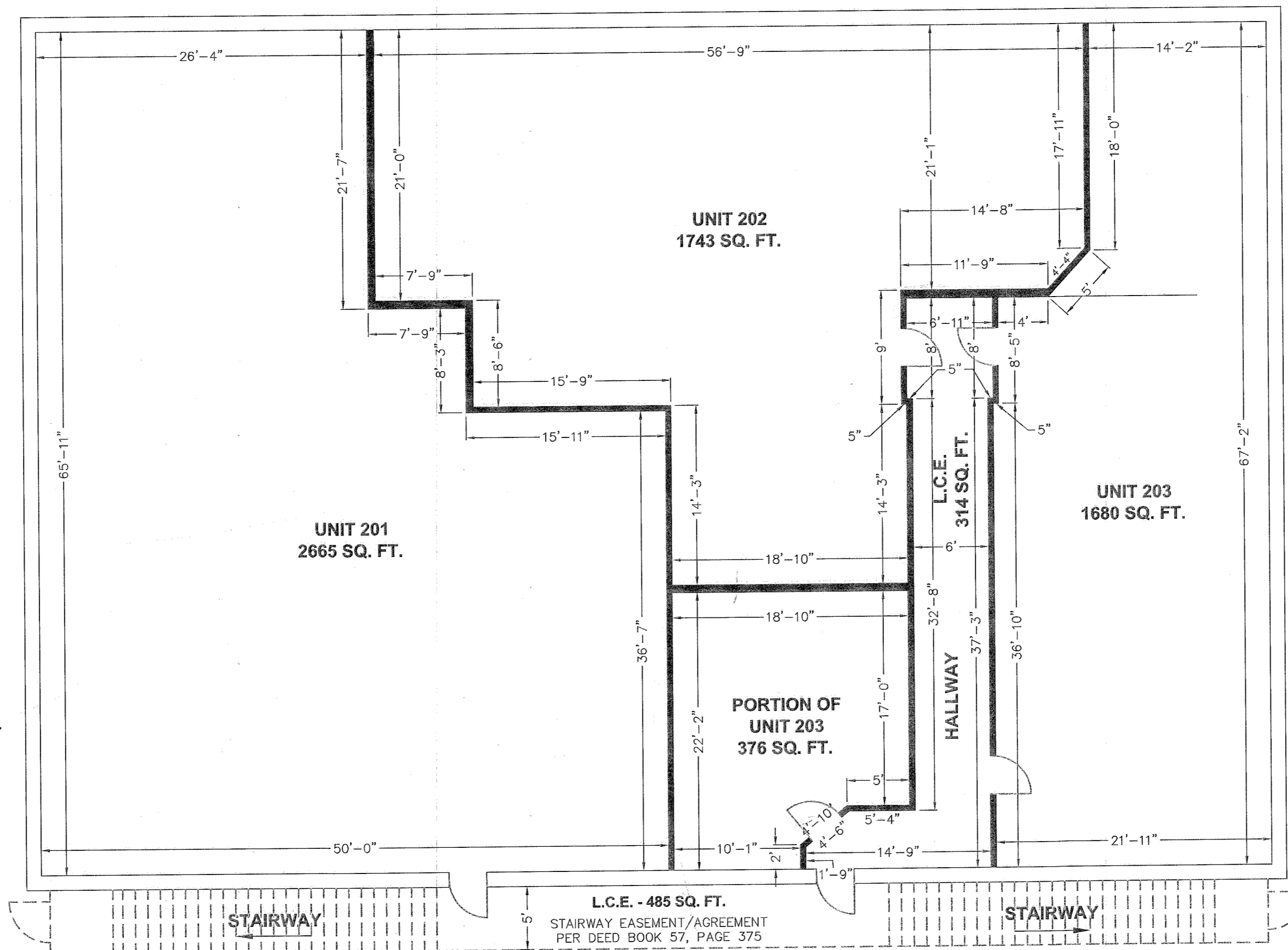
| | |
|---|--|
| Ceiling of Units 201, 202 & 203 - ELEV. = 3467.1' | |
| SECOND FLOOR | |
| Floor of Units 201, 202 & 203 - ELEV. = 3455.1' | |
| Ceiling of Unit 101 - ELEV. = 3453.5' | |
| Ceiling of Unit 102 - ELEV. = 3452.6' | |
| Ceiling (false ceiling) of Unit 101 - ELEV. = 3449.4' | |
| FIRST FLOOR | |
| Main floor of Unit 101 & Unit 102 - ELEV. = 3438.9' | |
| Ceiling of Unit 102 (Basement) - ELEV. = 3438.0' | |
| Ceiling of Unit 101 (Basement) - ELEV. = 3437.6' | |
| BASEMENT | |
| Floor of Unit 102 (Basement) - ELEV. = 3431.6' | |
| Floor of Unit 101 (Basement) - ELEV. = 3429.6' | |

NOT TO SCALE

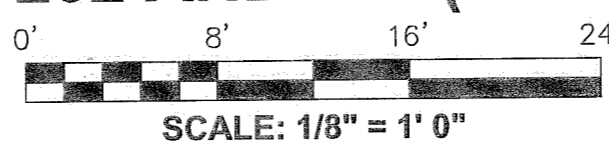
NOTE: FLOOR ELEV. OF UNIT 102 (BASEMENT) VARIES BY APPROXIMATELY ±0.3'

VERTICAL DATUM

Vertical datum based upon the U.S.G.S. Brass Cap Monument stamped "J2 1933", set vertically in the North wall of the subject building. Monument is approximately 12' East of the Northwest building corner and 4.5' above the sidewalk. Elevation = 3443.05' (NGVD '29).



UNITS 201, 202 AND 203 (SECOND FLOOR)



LEGEND

- Interior Unit Boundary
- L.C.E. Limited Common Element

I, Thomas J. Hanley, hereby certify that this is an exact duplicate copy of the plat of Pollman Building Condominiums as submitted to the Baker County Clerk for recording.

Thomas J. Hanley
Thomas J. Hanley

HANLEY ENGINEERING, INC.

P.O. BOX 701, 2043 MAIN STREET, BAKER CITY, OREGON 97814 (541) 523-3803

REGISTERED
PROFESSIONAL
LAND SURVEYOR

Thomas J. Hanley

OREGON
JULY 13, 1979
THOMAS J. HANLEY
1817

FILED MAY 31, 2005
BAKER COUNTY SURVEYOR
SURVEY NO. 9-40-6055D

Renews June 30, 2005